

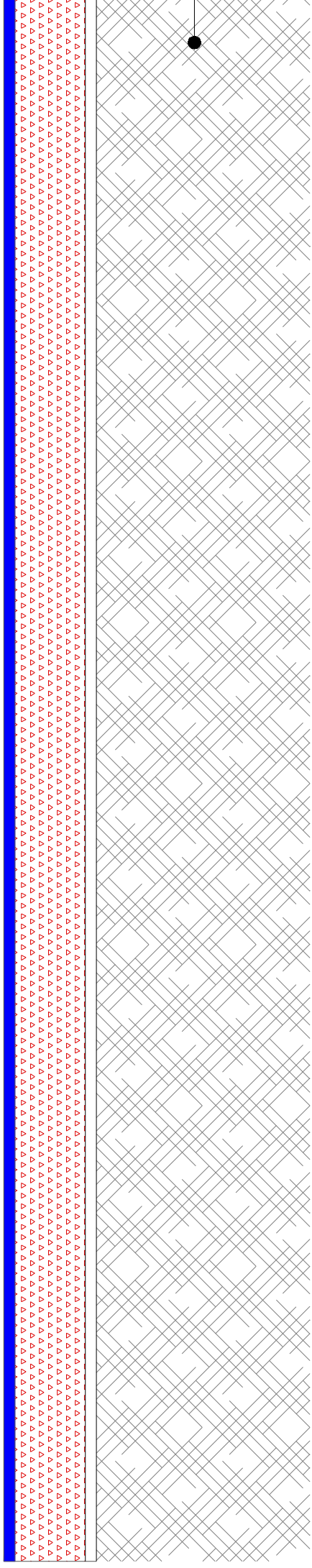
TRECHO DA RUA A SER PAVIMENTADO

extensão variável

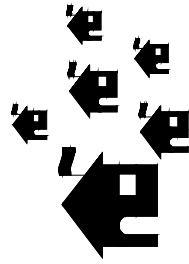
EST. 0

Início da Rua

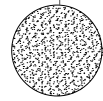
EST. FIN
Final da



ARAPUTANGA



1,00 km

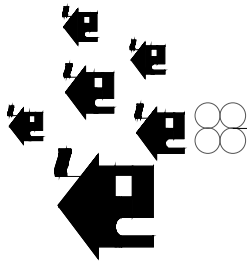


1,00 km

3,60 km

42,00 km

MIRASSOL D'OESTE



27,00 km

276,00 km

LEGENDA		COORD. GEOGRÁFICAS	DMT
	MATERIAL BETUMINOSO	—	345,00 Km
	TUBOS DE CONCRETO	—	42,00 Km
	BOTA-FORA	15°28'21.8" S 58°20'39.6" O	1,50 Km
	JAZIDA	15°26'29.02 S 58°19'59.71" O	4,60 Km
	PEDREIRA	15°50'45.34" S 58°9'14.12" O	70,00 Km



DMT:
1,00 Km em via pavimentada

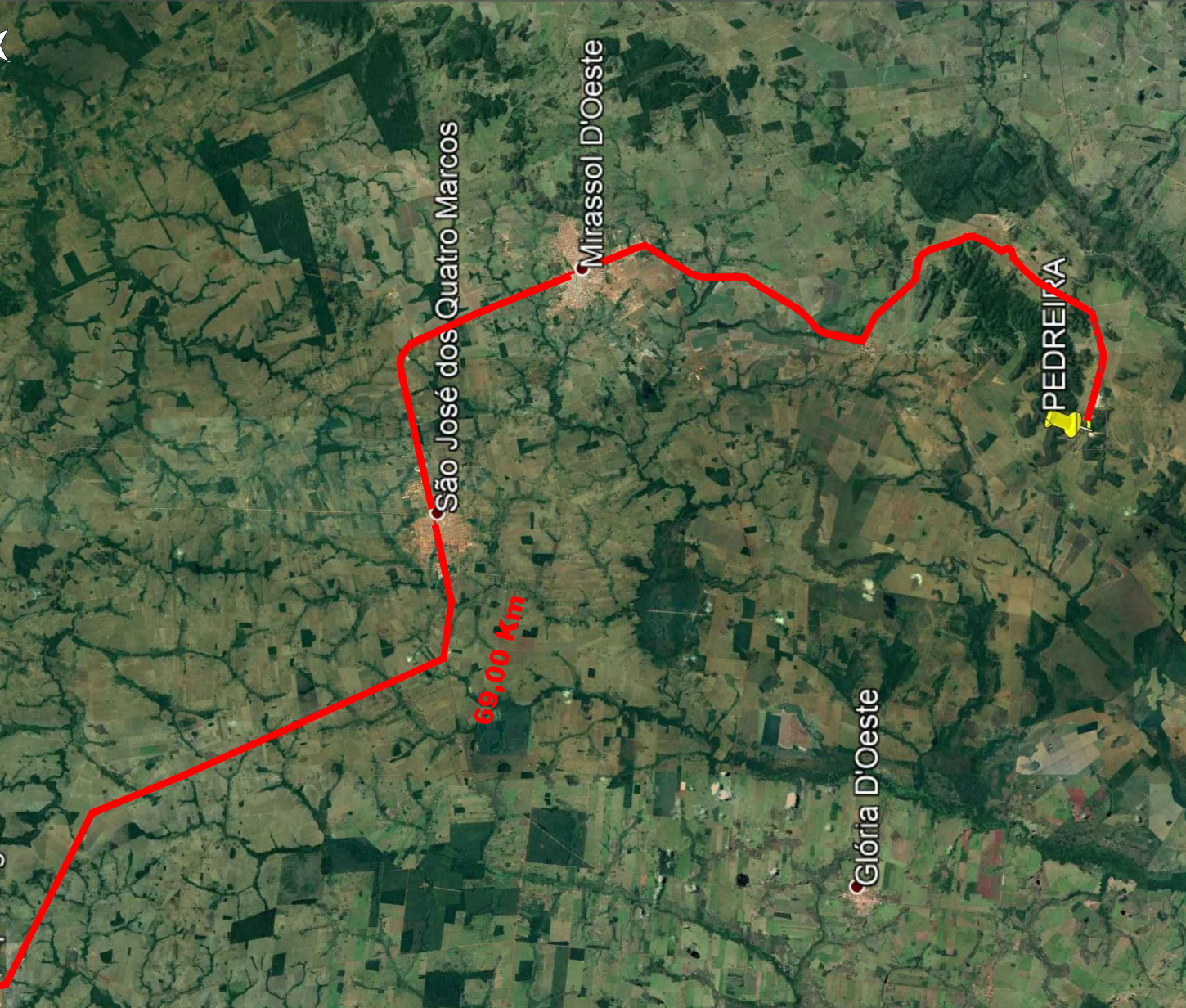




Coordenadas
15°26'33"
58°19'15"

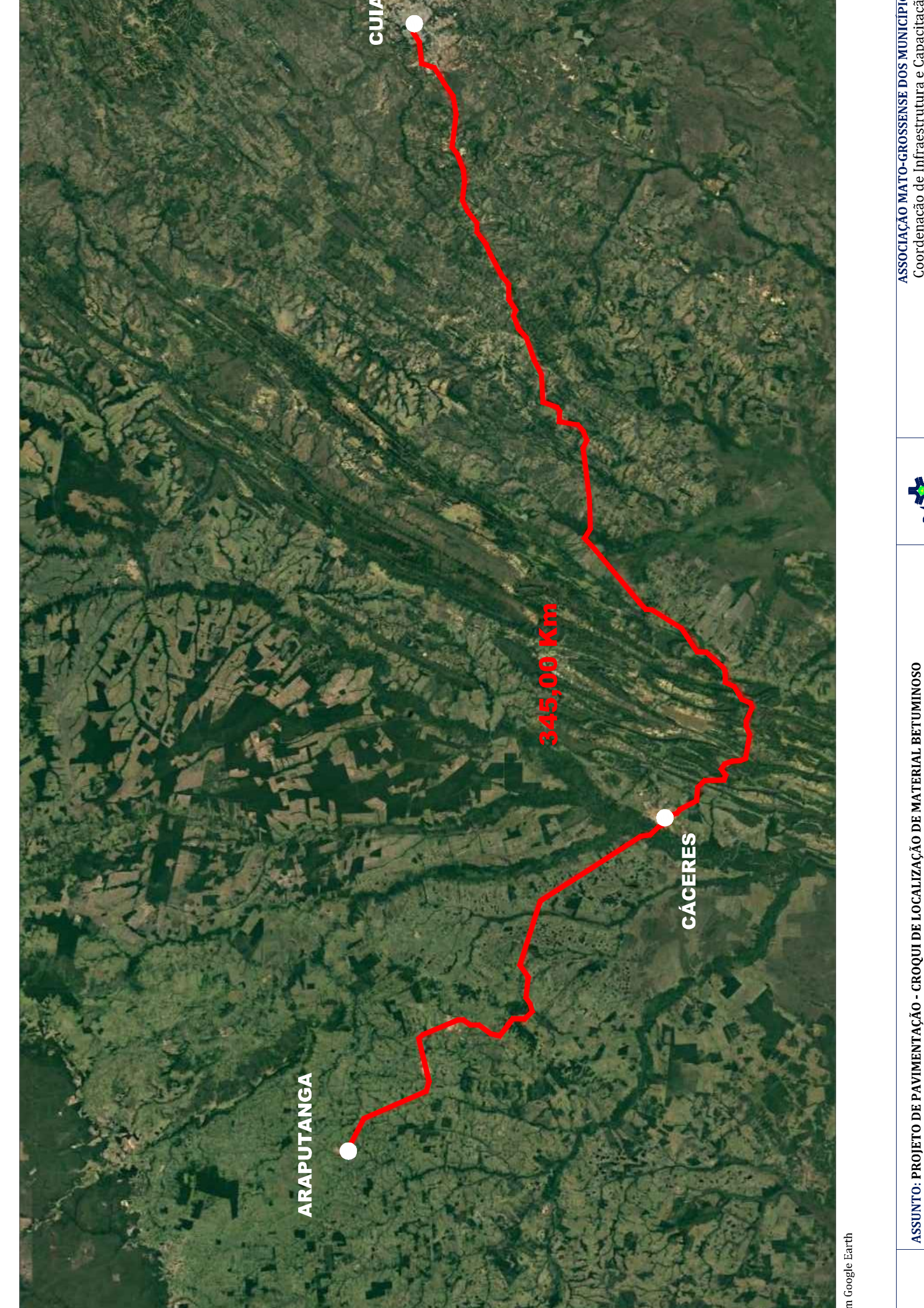
DMT:
3,60 Km em via pavimentada
1,00 Km em via não pavimentada





DMT:
69,00 Km em via pavimentada



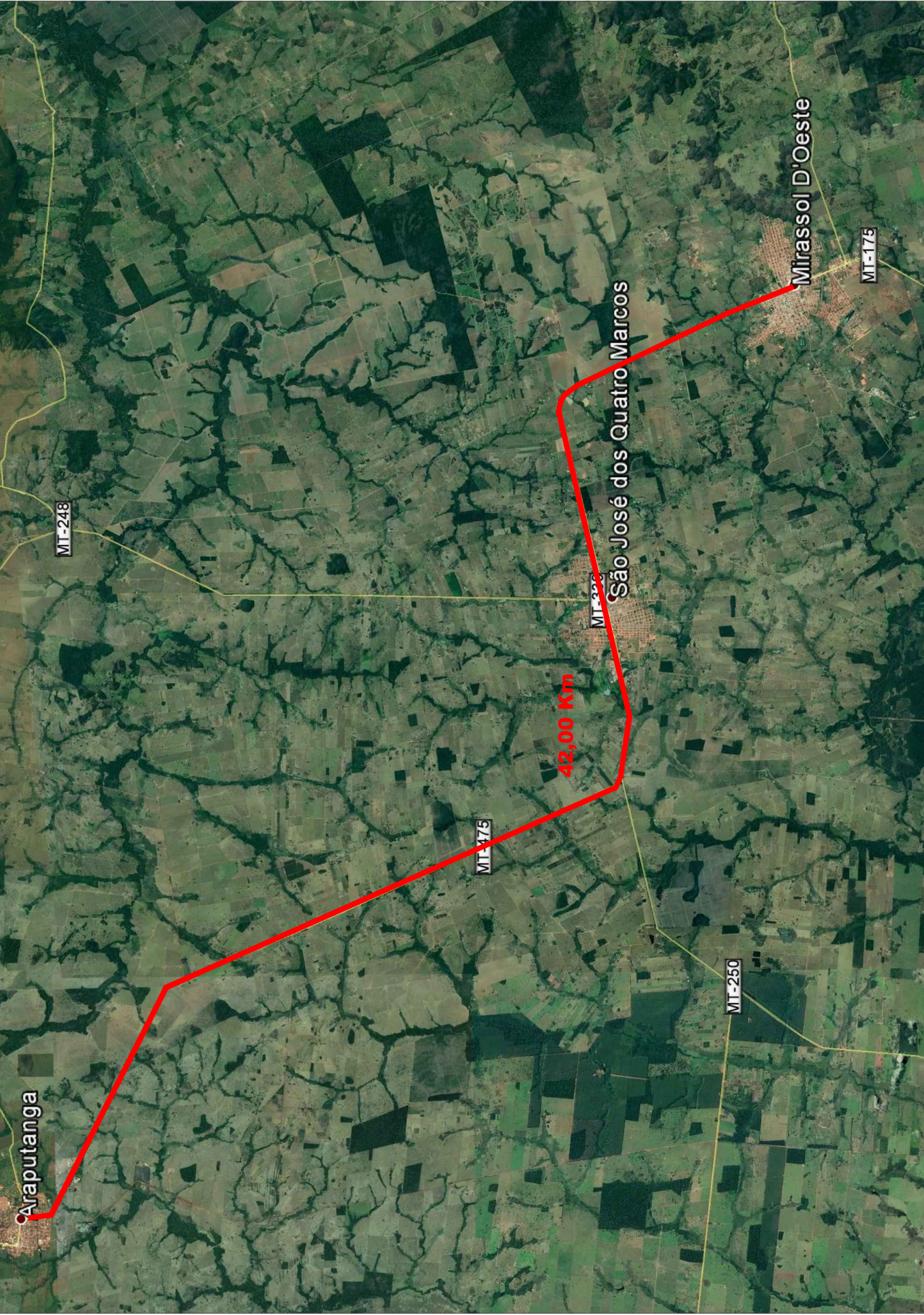


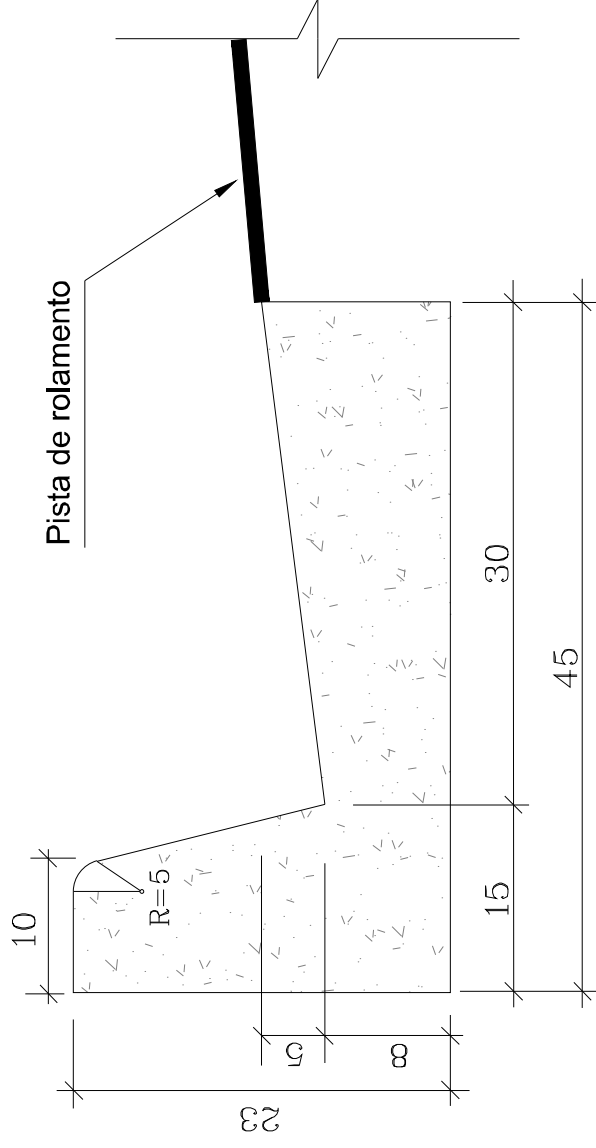
ARAPUTANGA

CÁCERES

CUIABÁ

345,00 Km

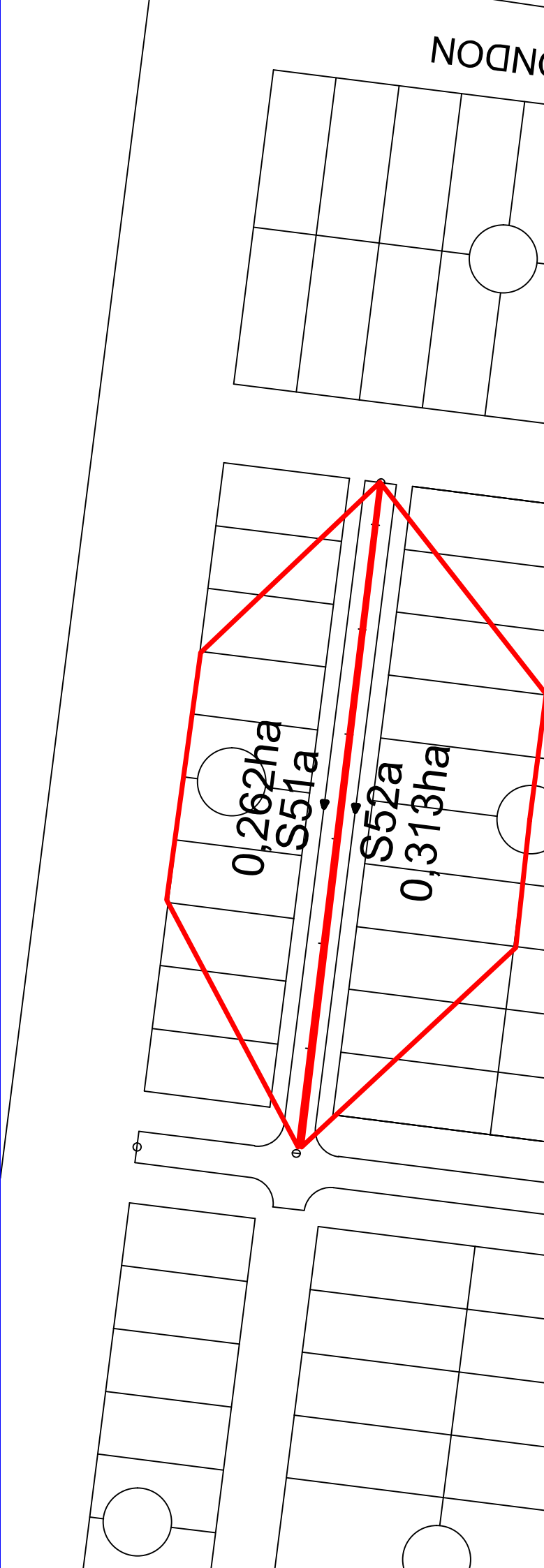
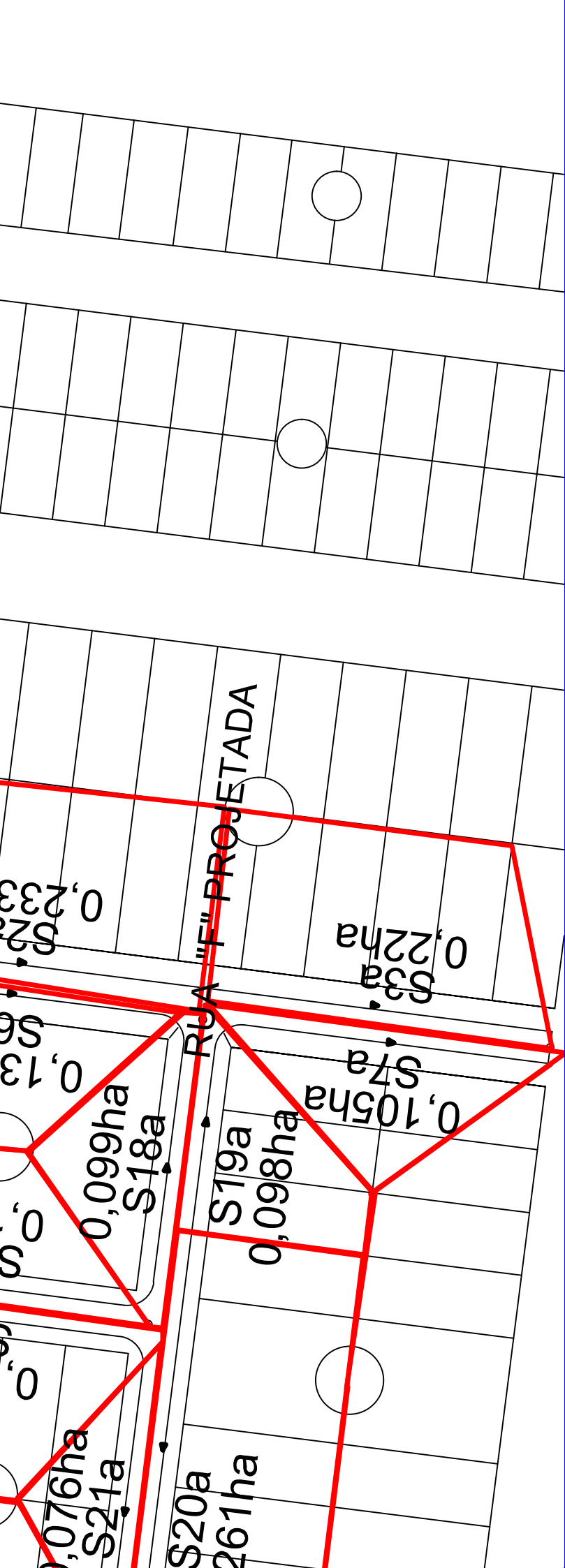


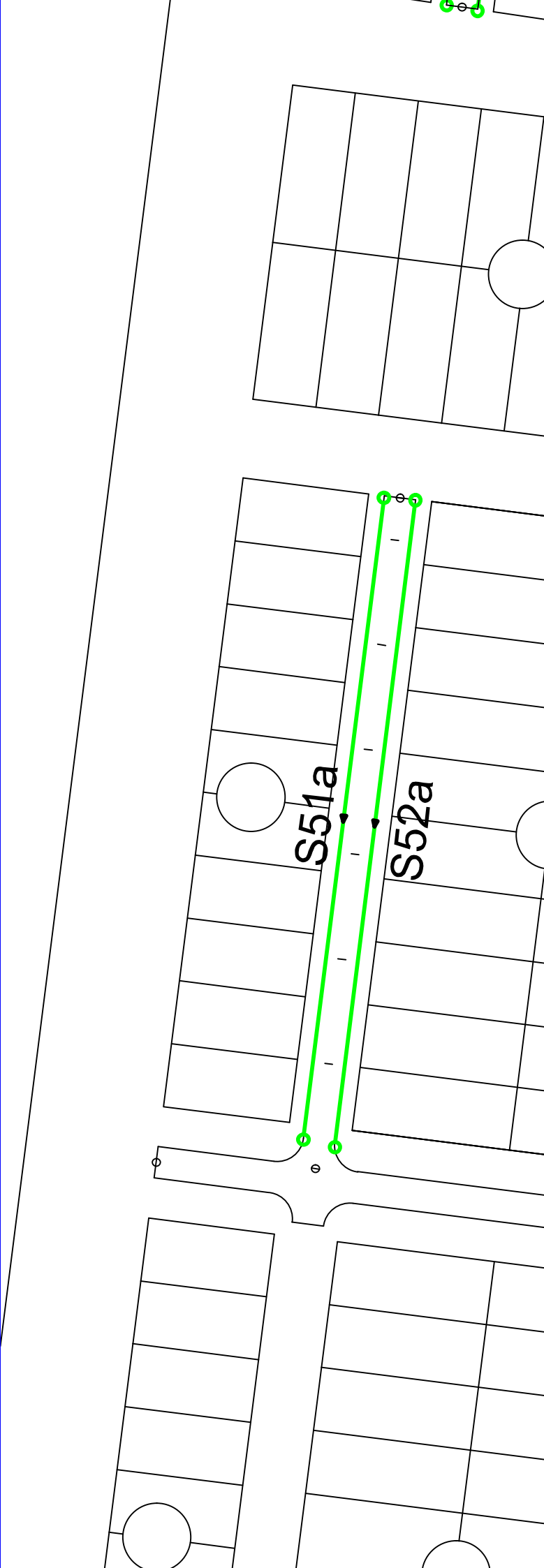
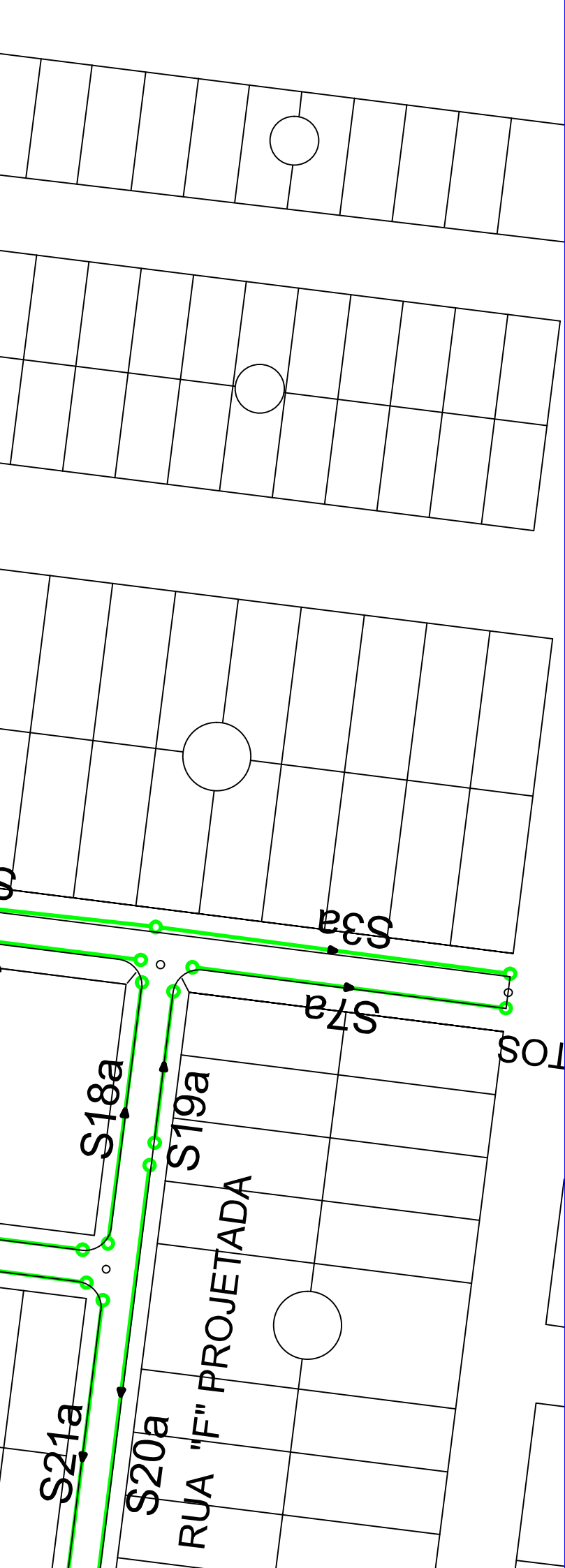


Cm;

o fios serão pré moldados ou moldados "in loco" por extrusão (formas deslizantes);

de formas indicadas aplicam-se ao caso de meios-fios moldados "in loco" por processo convencional.





RUA PRESIDENTE

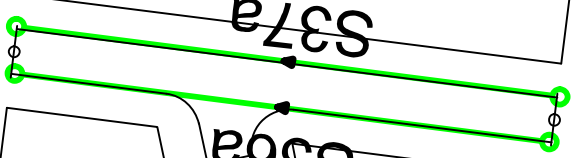
Rua Antônio Maria

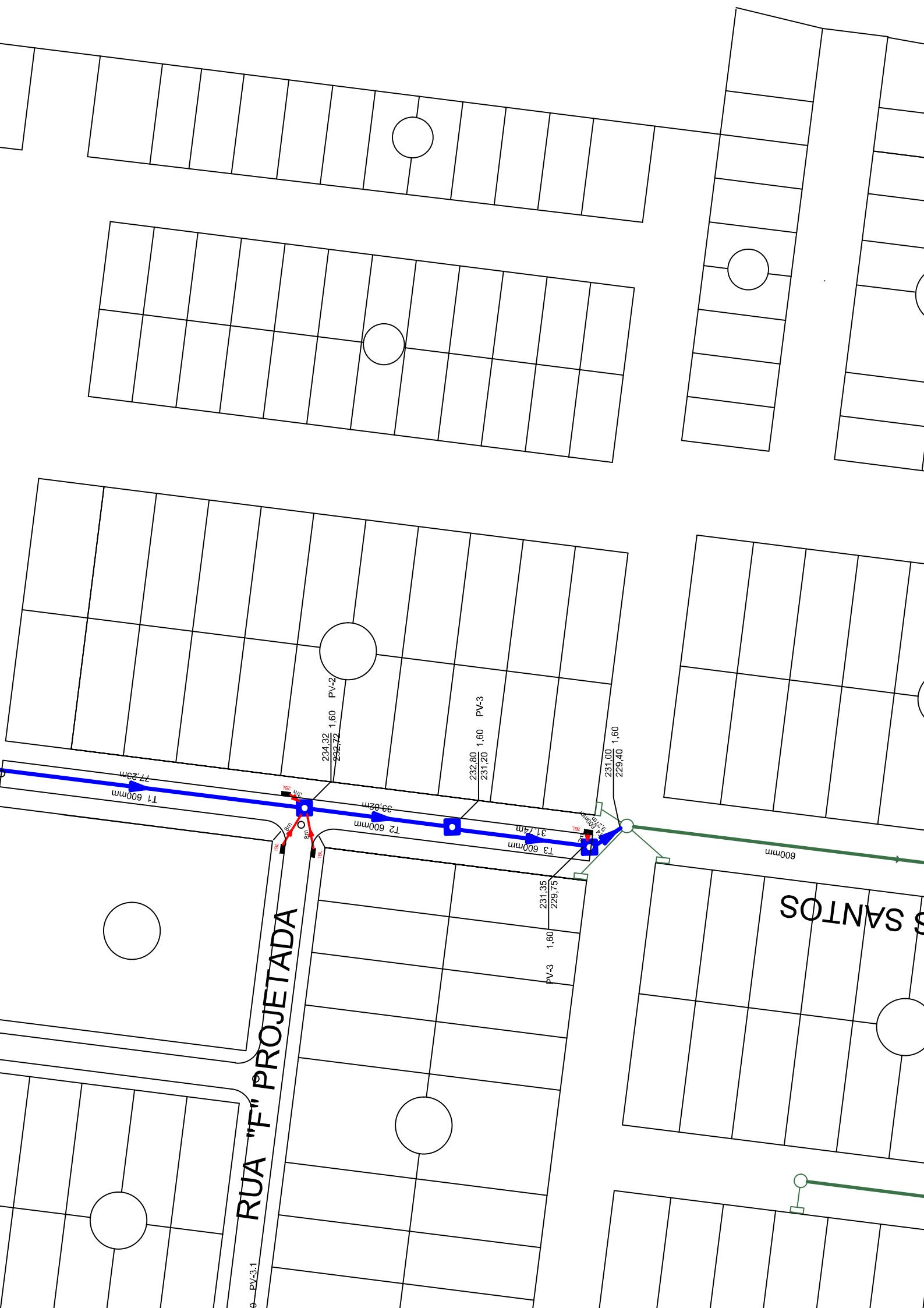
S36a

S37a

S38a

S39a





RUA "F" PROJETADA

SANTOS

T1 600mm

T2 600mm

T3 600mm

600mm

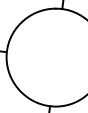
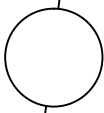
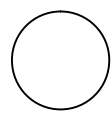
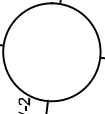
PV-2
234,32 1,60
232,72

PV-3
232,80 1,60
231,20

231,00 1,60
229,40

PV-3 1,60
231,35
229,75

φ PV-3.1



NOTAS:
1 – Dimensões em cm;

POÇOS DE VISITA COM DISPOSITIVO INTERNO DE QUEDA DE 50cm												
PVI04	100	25	150	–	130	130	100	19,64	22,9	2.480		
PVI05	120	25	170	–	150	150	120	23,62	25,7	2,890		
PVI06	150	25	200	–	180	180	150	30,19	31,6	3,500		
POÇOS DE VISITA COM DISPOSITIVO INTERNO DE QUEDA DE 100cm												
PVI07	40	20	130	25	80	130	90	17,85	17,0	2,030		
PVI08	60	20	130	15	80	130	90	17,85	17,0	1,970		
PVI09	80	25	140	5	100	150	90	19,48	17,5	2,420		
PVI10	100	25	150	–	130	180	100	20,57	22,9	2,840		
PVI11	120	25	170	–	150	200	120	26,77	25,7	3,270		
PVI12	150	25	200	–	180	230	150	33,64	31,6	3,920		
POÇOS DE VISITA COM DISPOSITIVO INTERNO DE QUEDA DE 150cm												
PVI13	40	20	130	25	80	180	90	20,65	17,0	2,360		
PVI14	60	20	130	15	80	180	90	20,65	17,0	2,300		
PVI15	80	25	140	5	100	200	90	22,33	17,5	2,800		
PVI16	100	25	150	–	130	230	100	25,54	22,9	3,240		
PVI17	120	25	170	–	150	250	120	29,92	25,7	3,690		
PVI18	150	25	200	–	180	280	150	37,09	31,6	4,380		

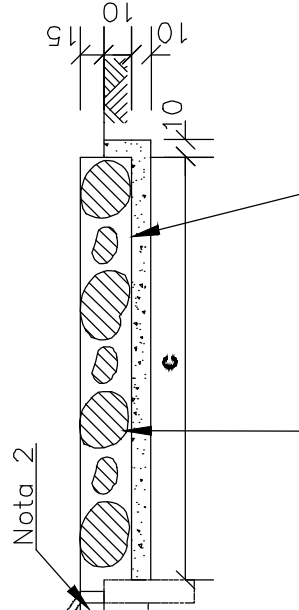
A

∅ 12,5–185

8,3–85c/15

ENERGIA (II) S E DESCIDAS D'ÁGUA DE ATERROS - DEB

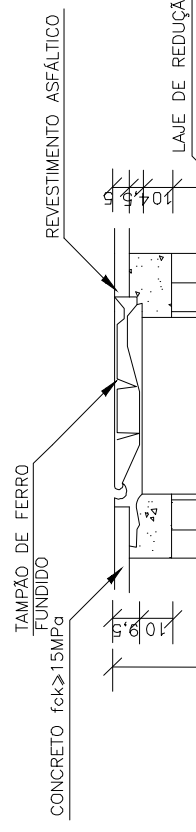
CORTE AA'



Nota 2

CHAMINÉ DOS

CORTE TRANSVERSAL



DEB

∅ 12,5–CA–50

LAJE DE REDUÇÃO



RUA OSVALDO ALVAREZ DE CAMPOS

RUA E PROJETADA

RUA R

ÁREA VERDE

RUA O

ÁREA VERDE II

POÇO SÃO FRANCISCO

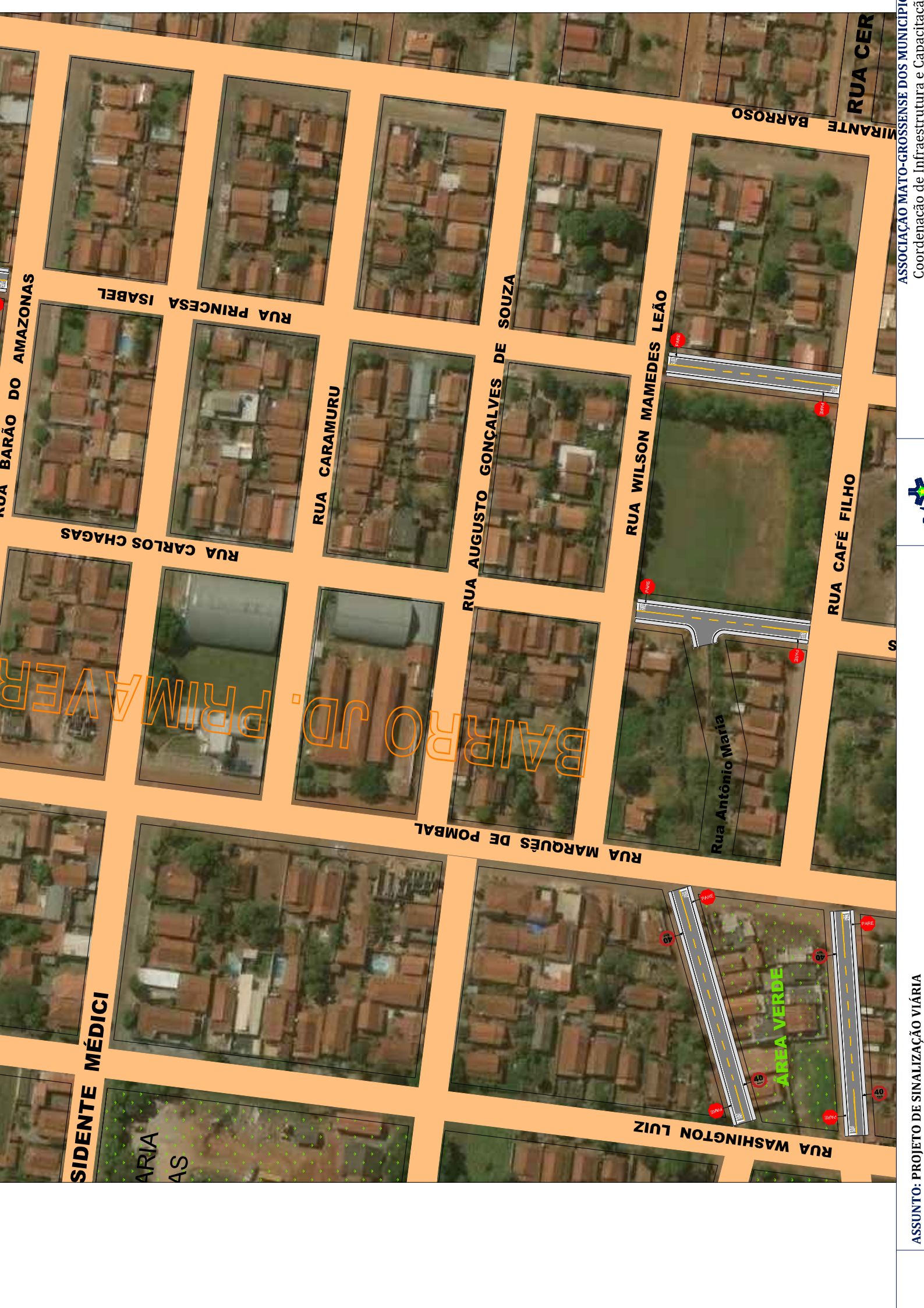
RUA D

RUA C

RUA F

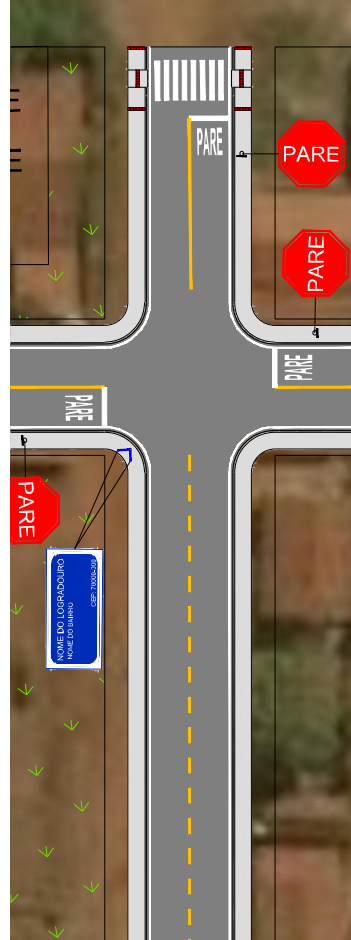
RUA D

RUA MARANHÃO

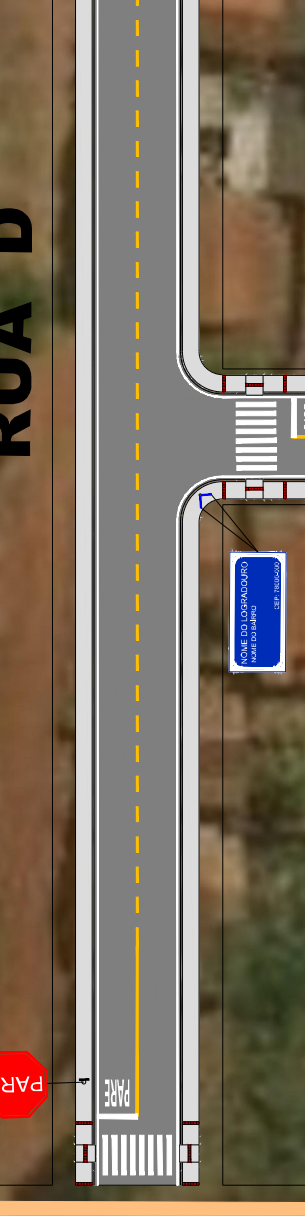
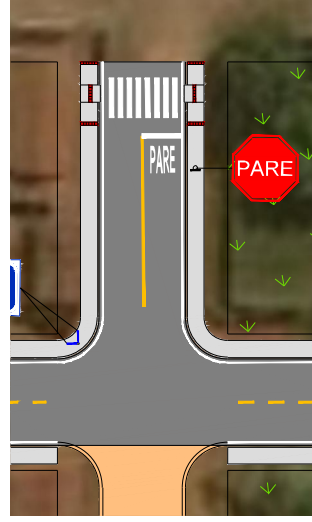




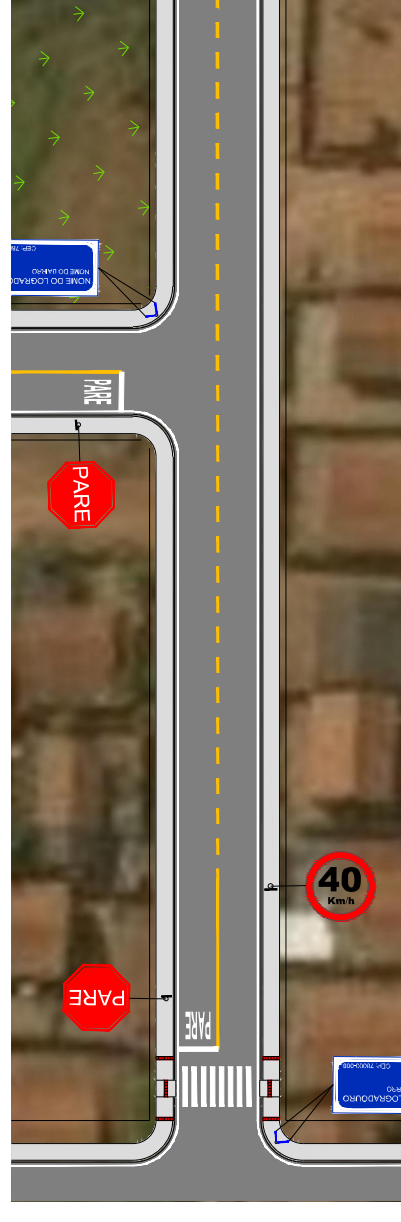
RUA D - TRECHO 2



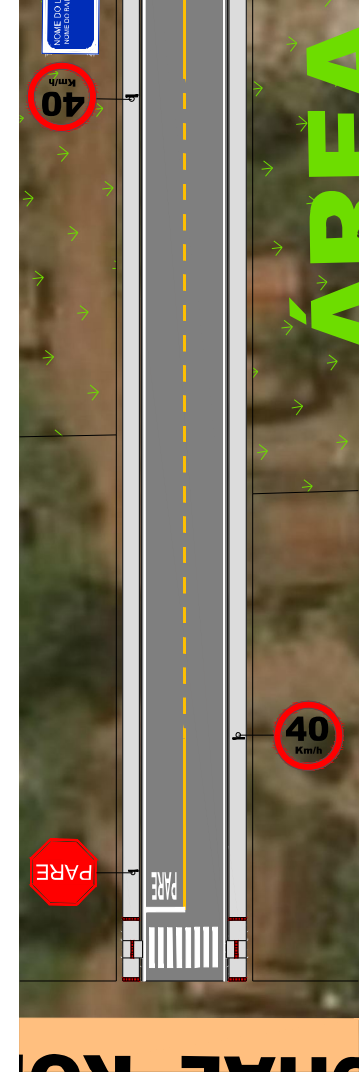
RUA E

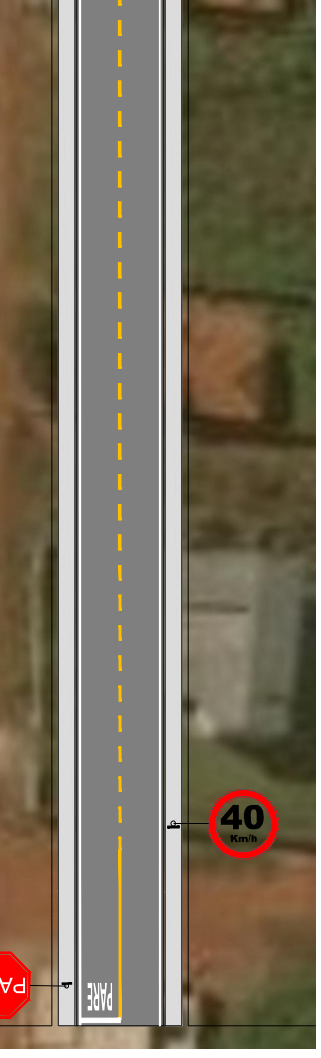
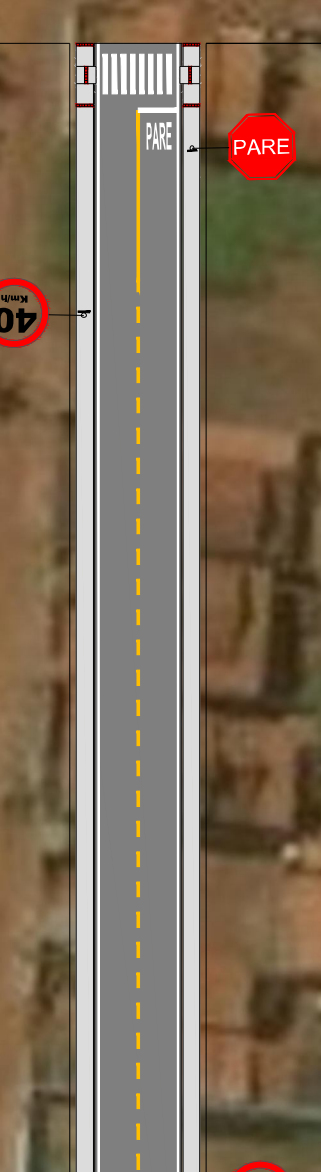


RUA O

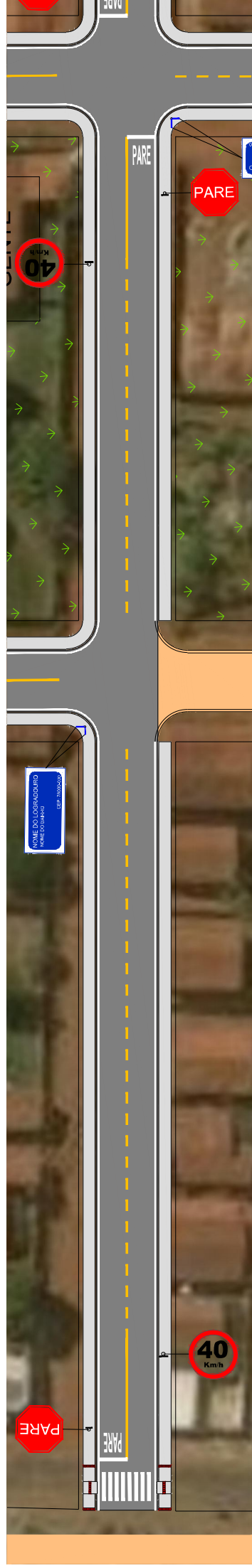


RUA F

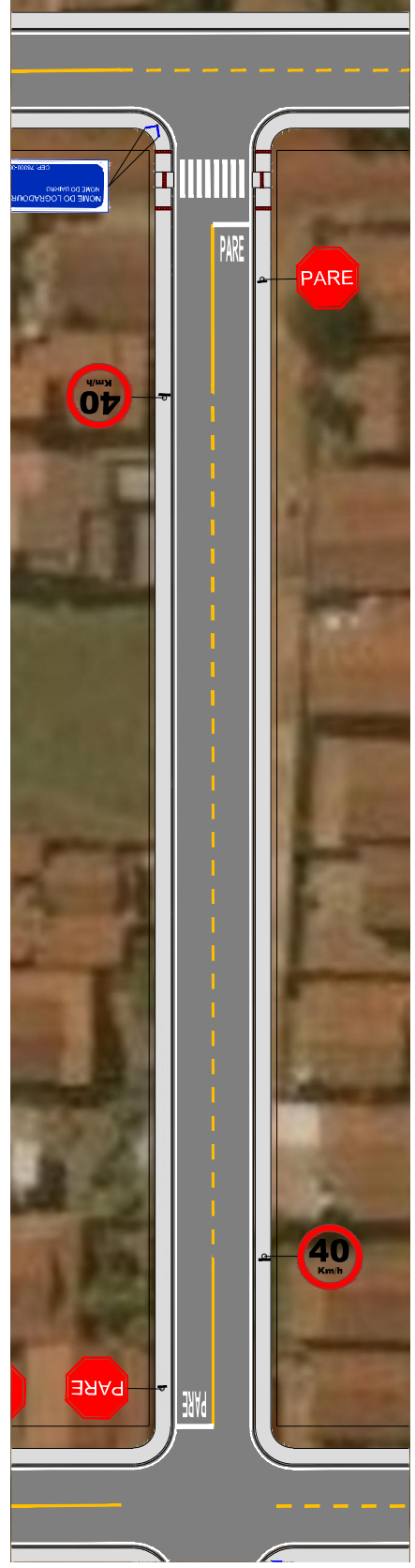


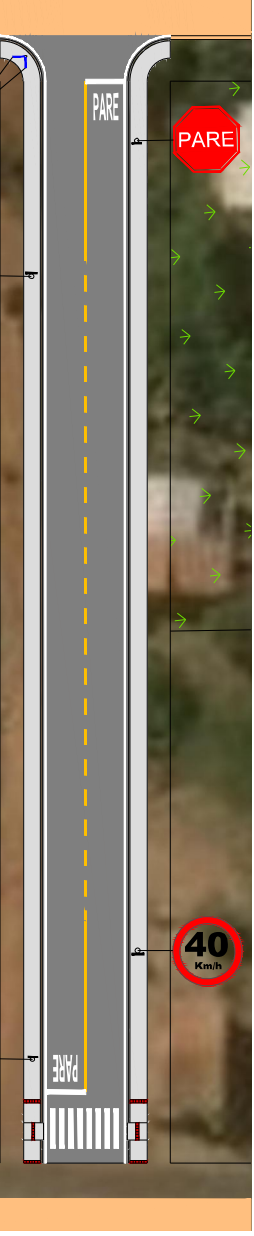


RUA R - TRECHO 1



RUA R - TRECHO 2

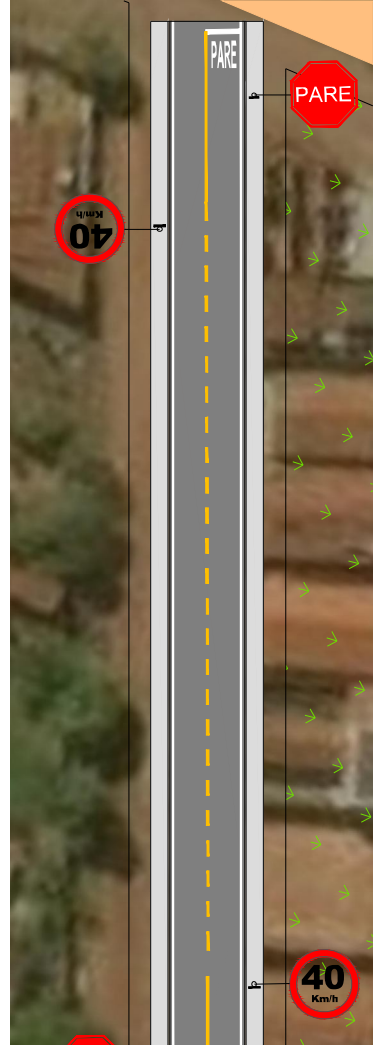




RUA MANOEL SOUZA

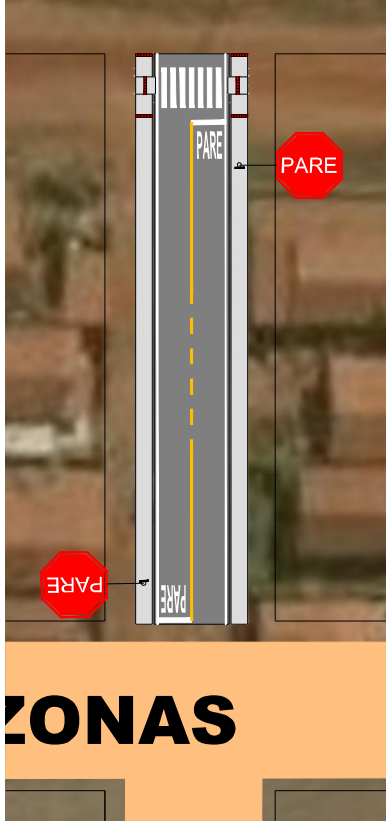
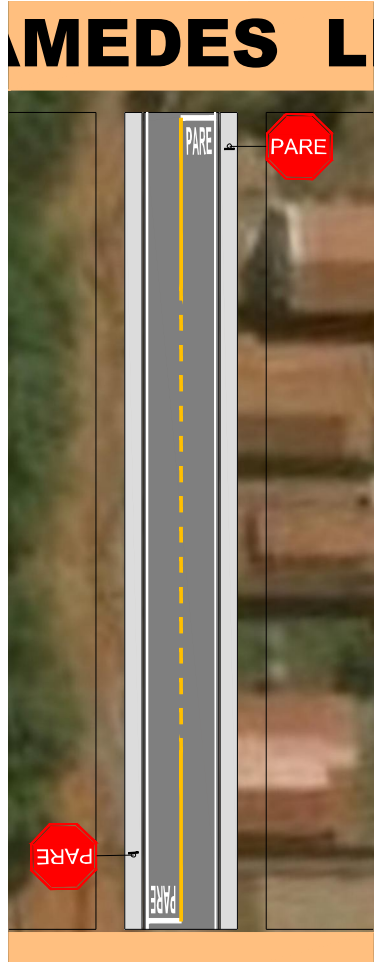


RUA 7



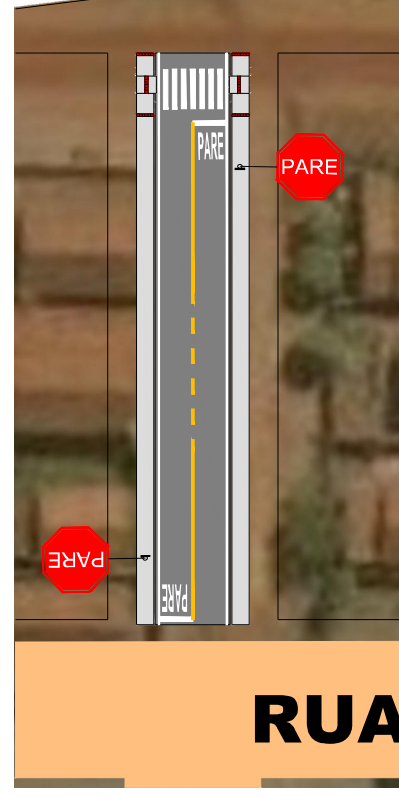
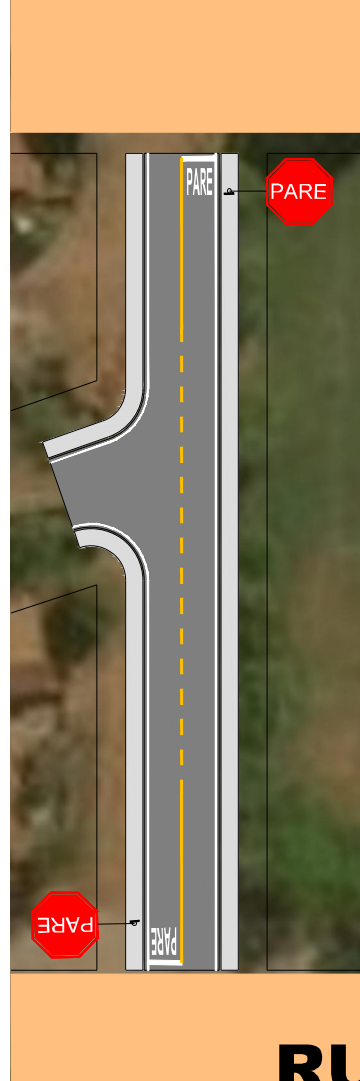
RUA 9

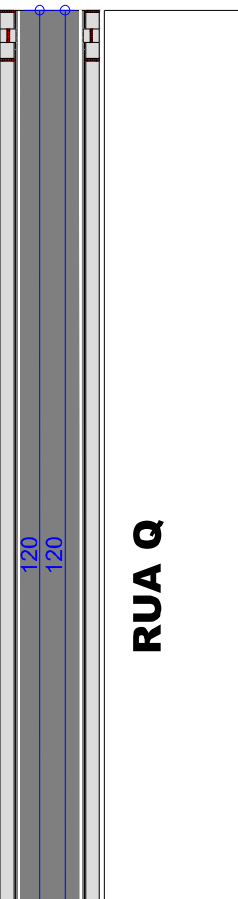




RUA CARLOS CHAGAS - TRECHO 1

RUA CARLOS CHAGAS - TRECHO 2

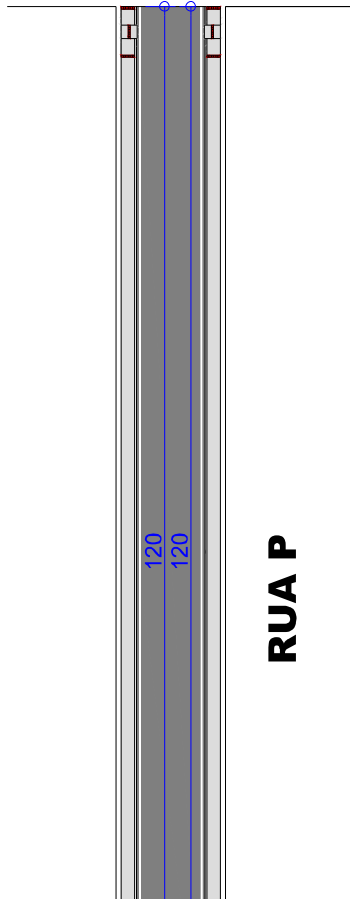




RUA Q

120

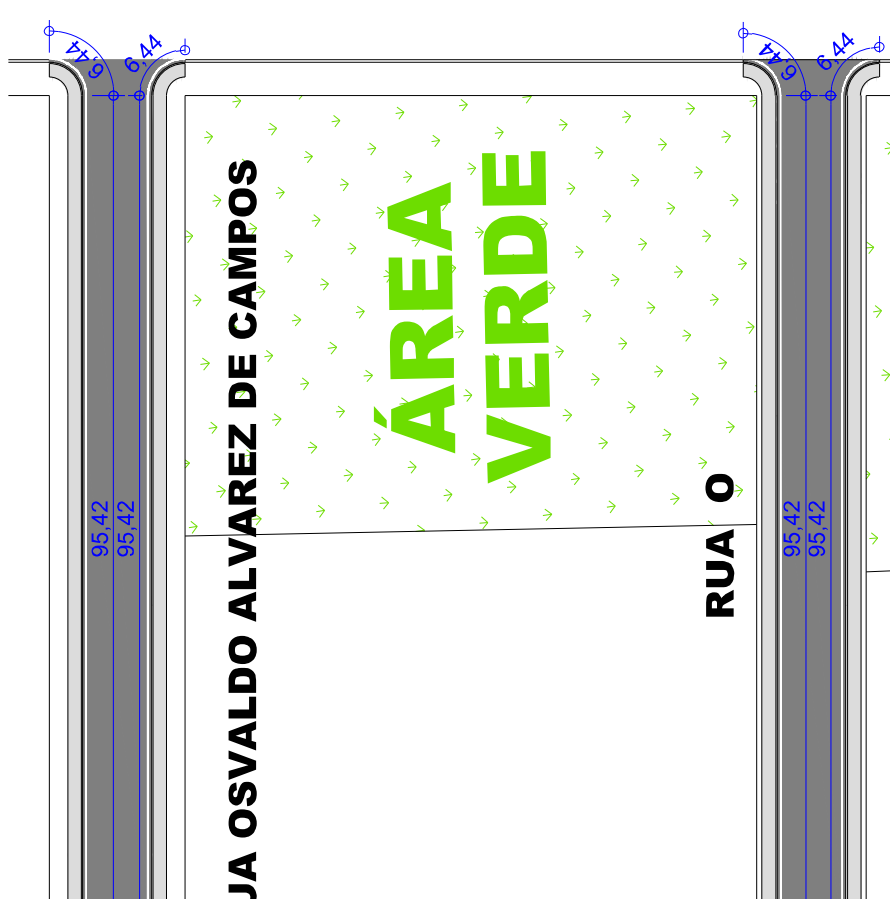
120



RUA P

120

120



RUA OSVALDO ALVAREZ DE CAMPOS

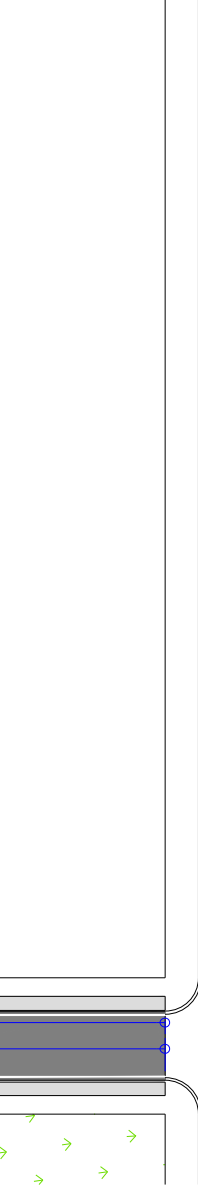
RUA O

95,42

95,42

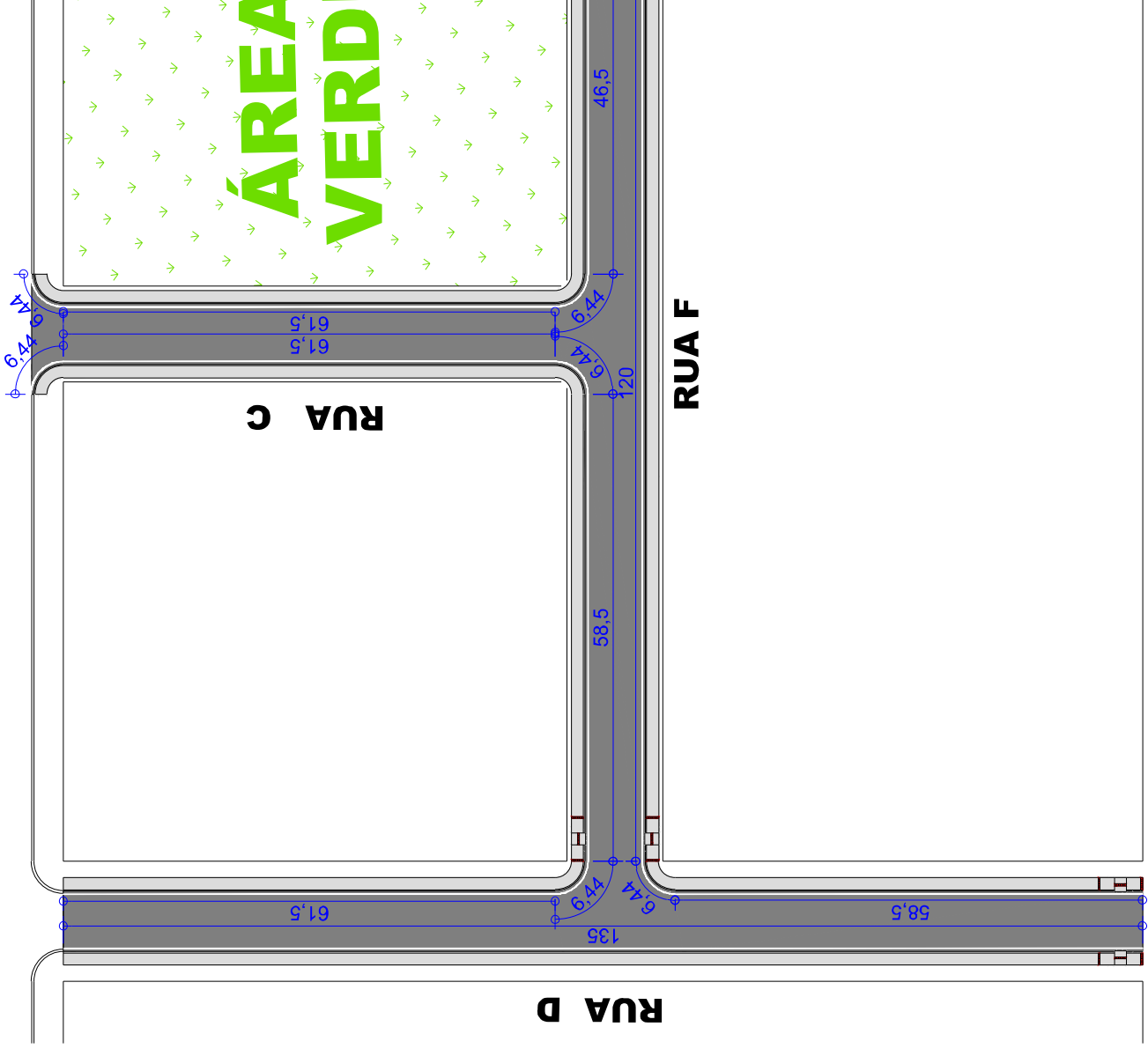
95,42

95,42



RUA D

61,5



RUA C

RUA F

ÁREA VERDE

58,5

135

61,5

61,5

46,5

6,44

6,44

6,44

120

6,44

6,44

6,44

6,44

6,44

6,44

6,44

6,44

6,44

6,44

6,44

6,44

6,44

6,44

6,44

6,44

6,44

6,44

6,44

6,44

6,44

6,44

6,44

6,44

6,44

6,44

6,44

6,44

6,44

6,44

6,44

6,44

6,44

6,44

6,44

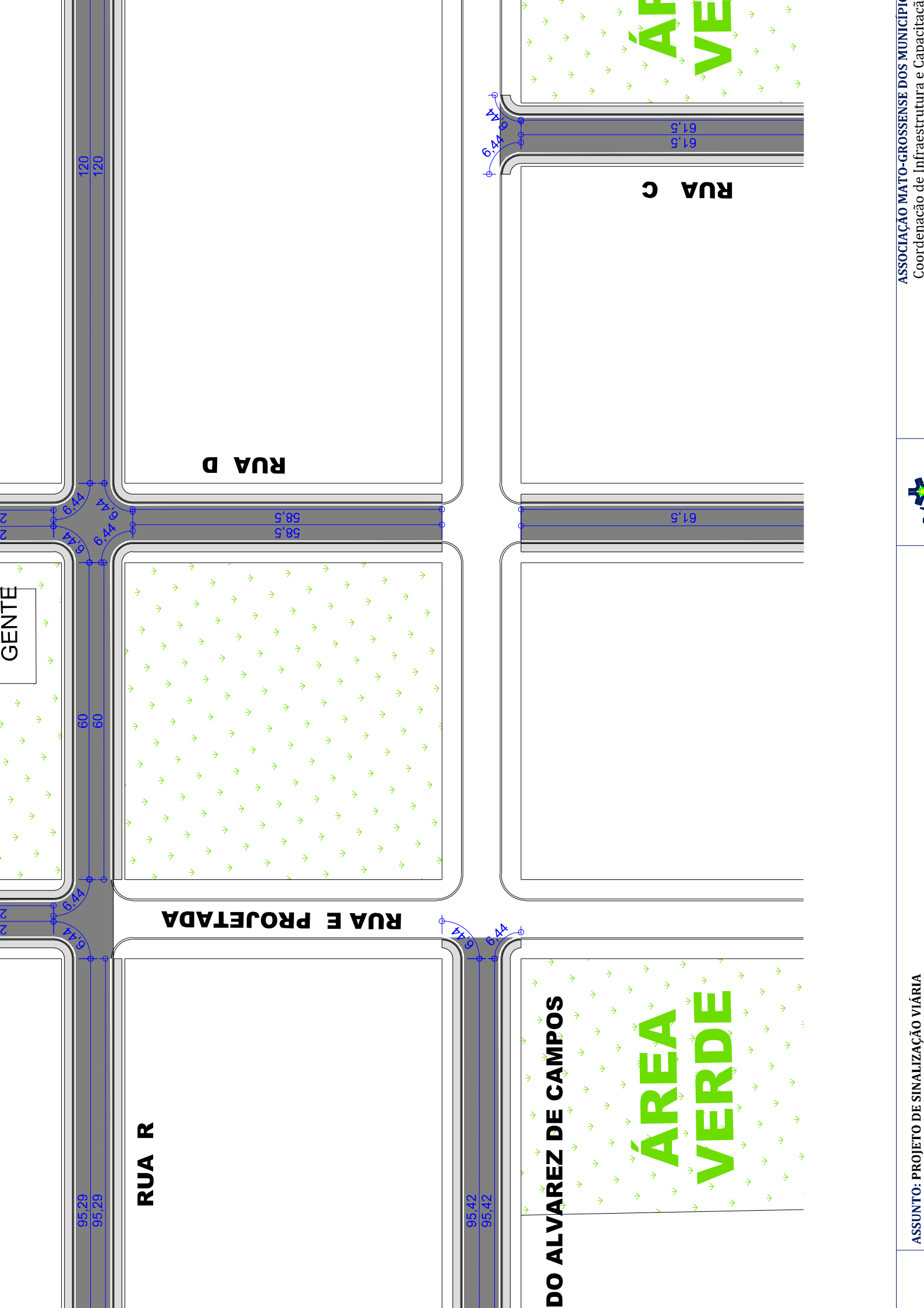
6,44

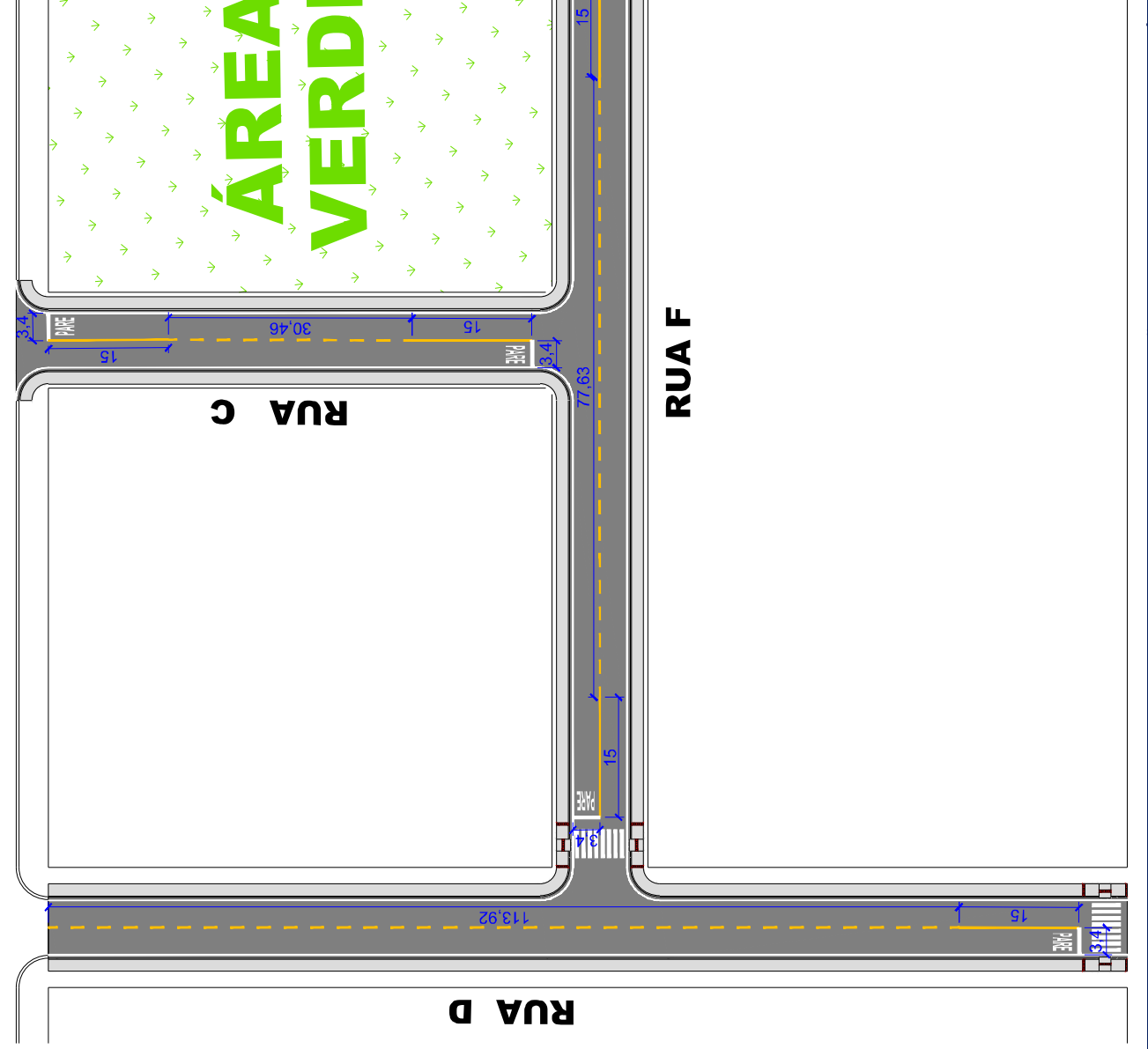
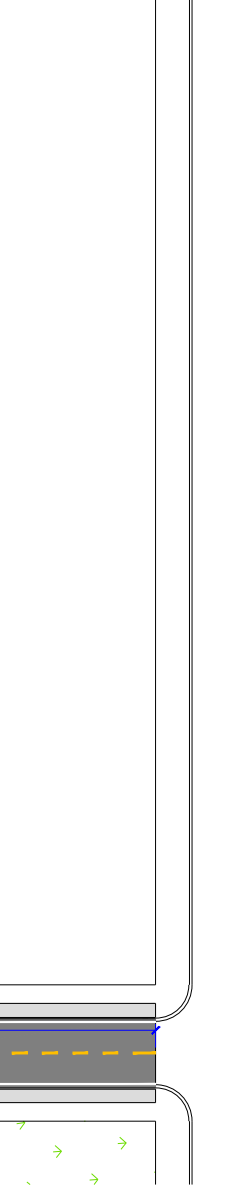
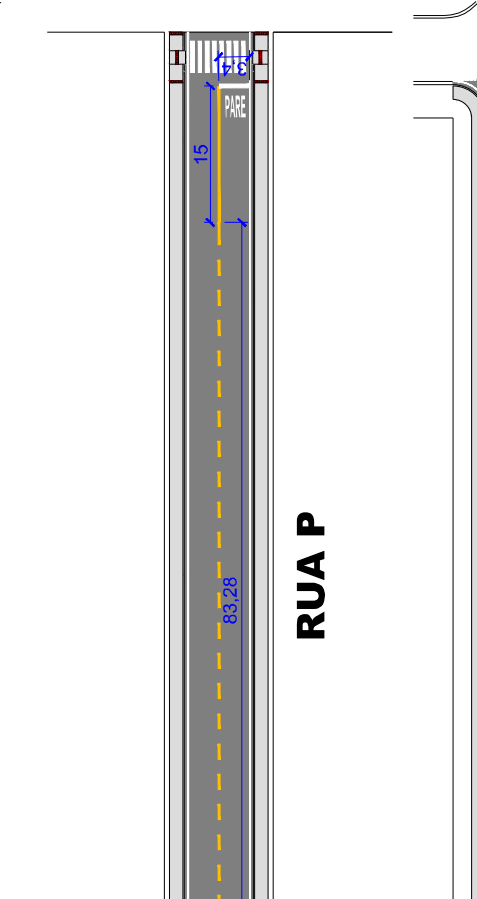
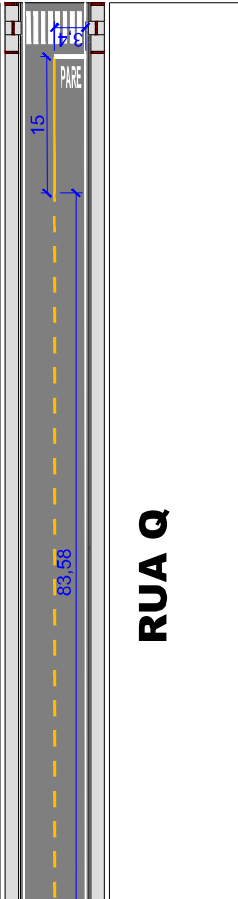
6,44

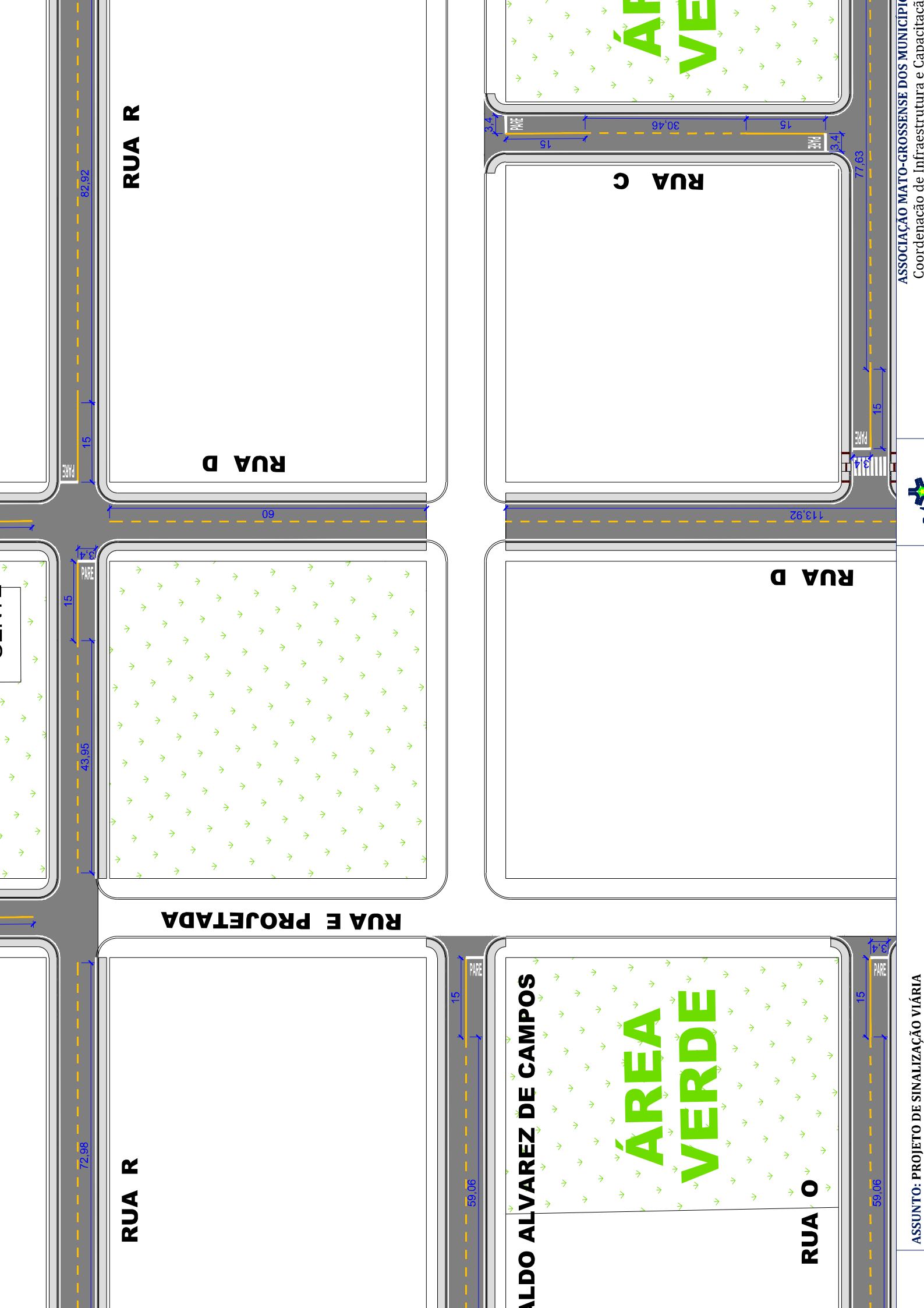
6,44

6,44

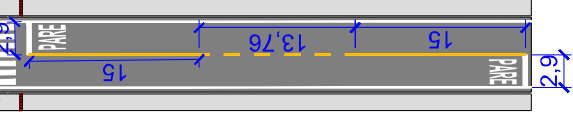




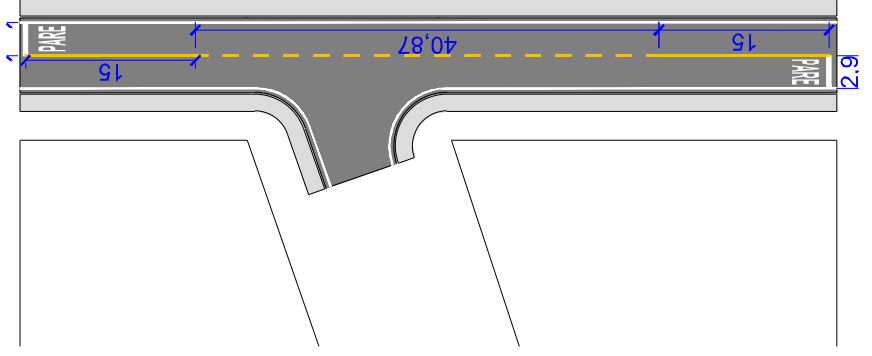




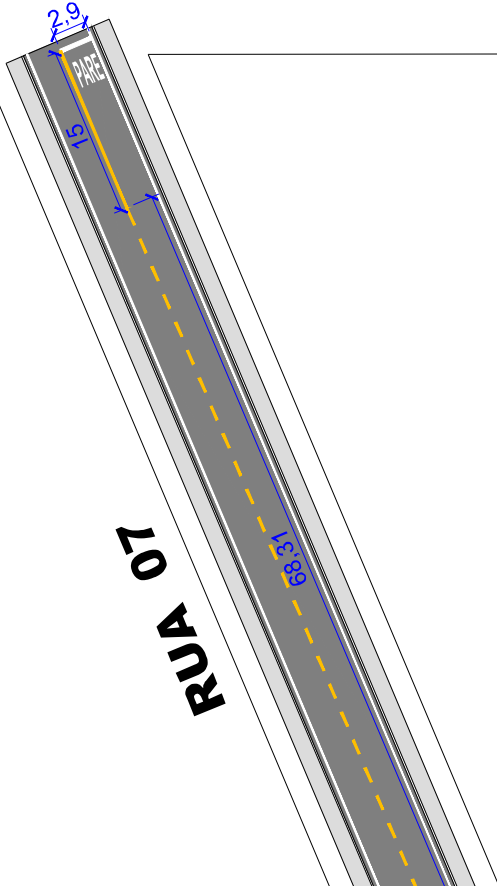
RUA CARLOS CHAGAS



RUA CARLOS CHAGAS

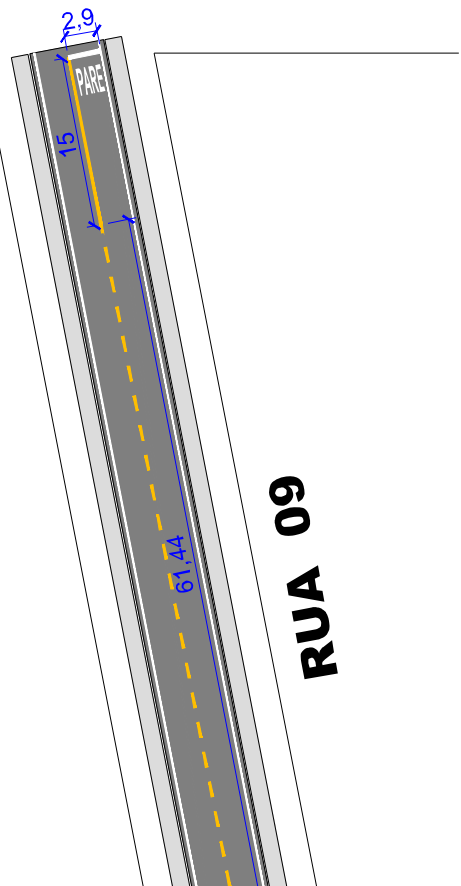


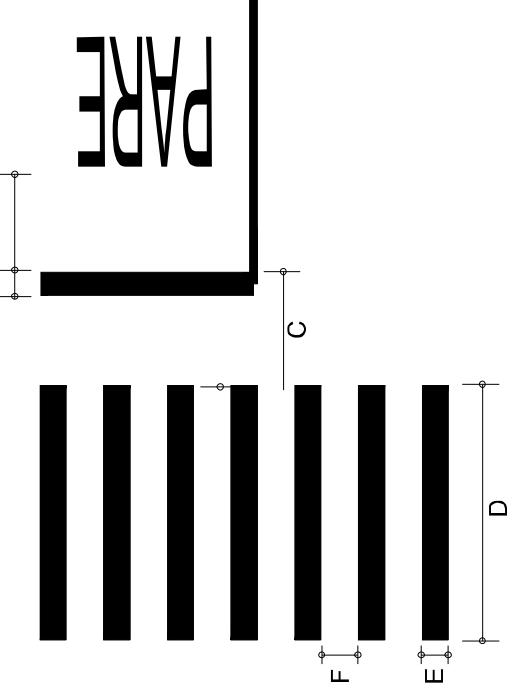
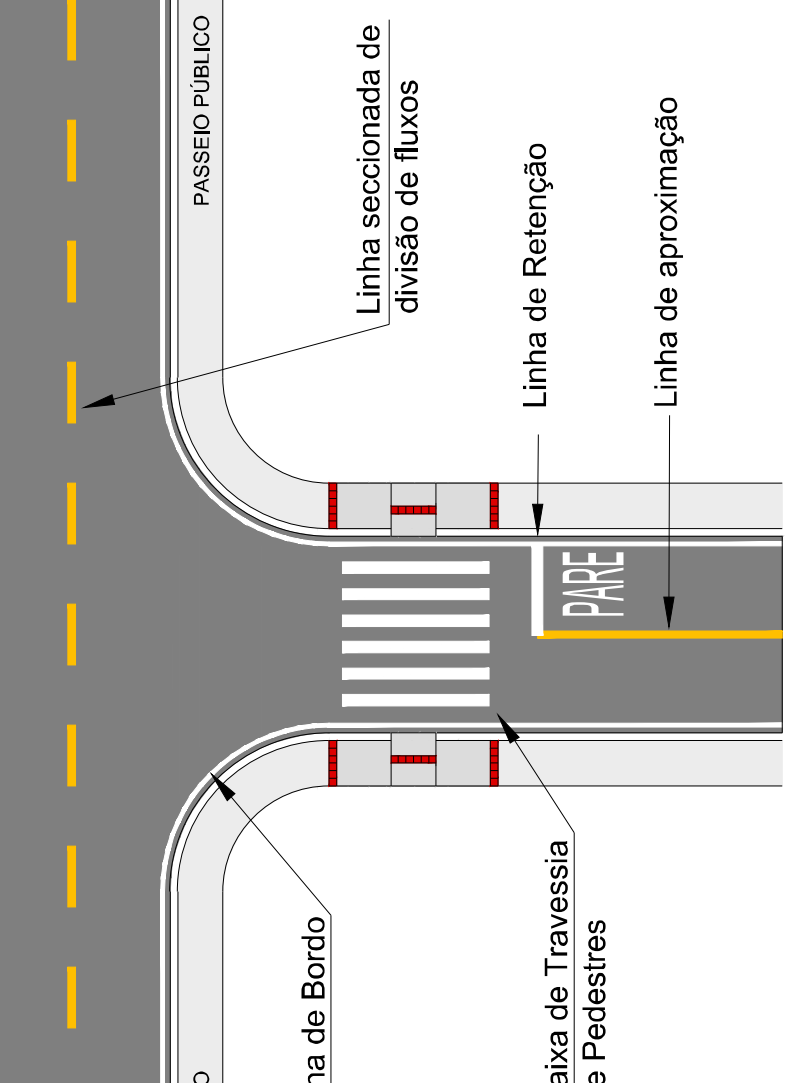
RUA 07



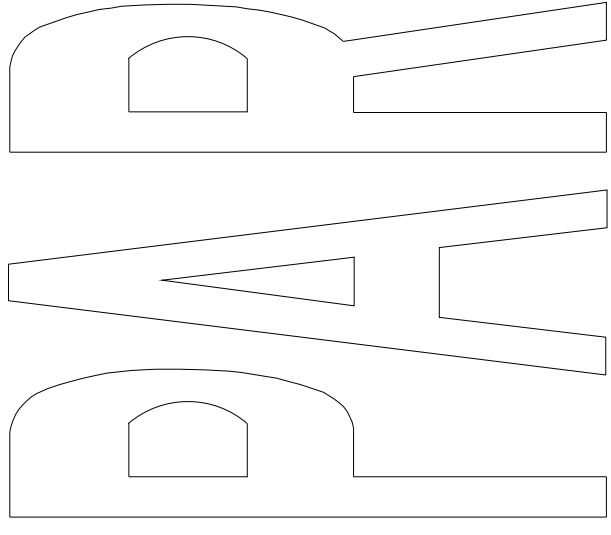
ÁREA VERDE

RUA 09



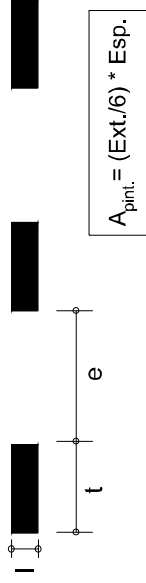
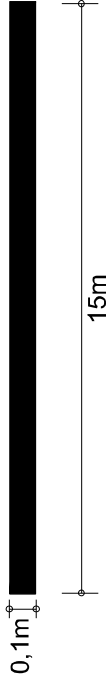


LEGENDA "PARE"

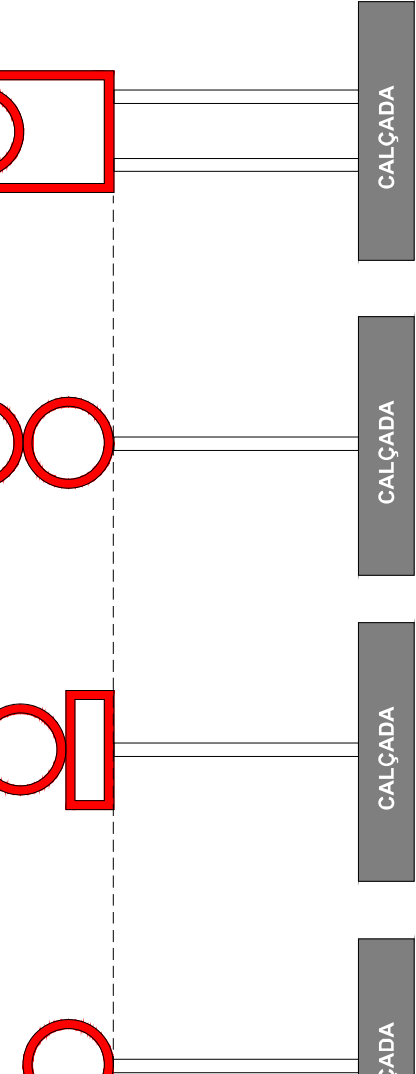


min. 1,90

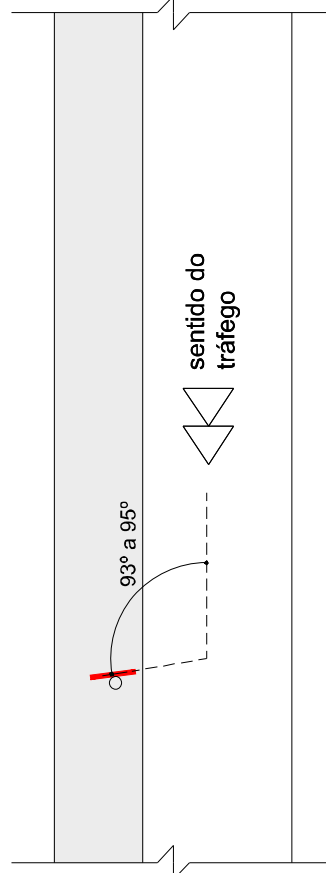
to
m
a
nação:
m
m
m
a:
: 4,00 m
10 m



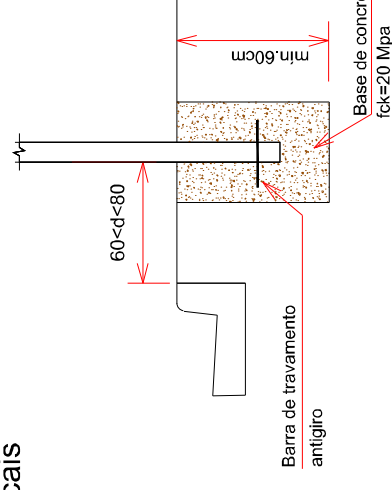
$$A_{\text{pint.}} = (\text{Ext./6}) * \text{Esp.}$$



na via



Fundação das Placas Verticais



PLACA INDICATIVA DE VELOCIDADE MÁXIMA PERMITIDA

R-19 Velocidade Máxima Permitida

CORES

Fundo: Vermelho Refletivo
Orla Interna: Branco Refletivo
Orla Externa: Vermelho Refletivo
Letras: Branco Refletivo
Verso: Preto Fosco

DIMENSÕES

Lado: 350 mm
Orla Interna: 20 mm
Orla Externa: 10 mm
Altura da Letra: 101 mm



CORES

Fundo: Branco Refletivo
Orla: Vermelho Refletivo
Algarismo: Preto
Legenda: Preta
Verso: Preto Fosco

DIMENSÕES

Diâmetro: 400 mm
Orla: 50 mm
Algarismo (40): 200 mm
Letra (Km/h): 44 mm

PLACA "PASSAGEM SINHALIZADA DE PEDREIROS"

A-32b Passagem sinalizada de pedestres

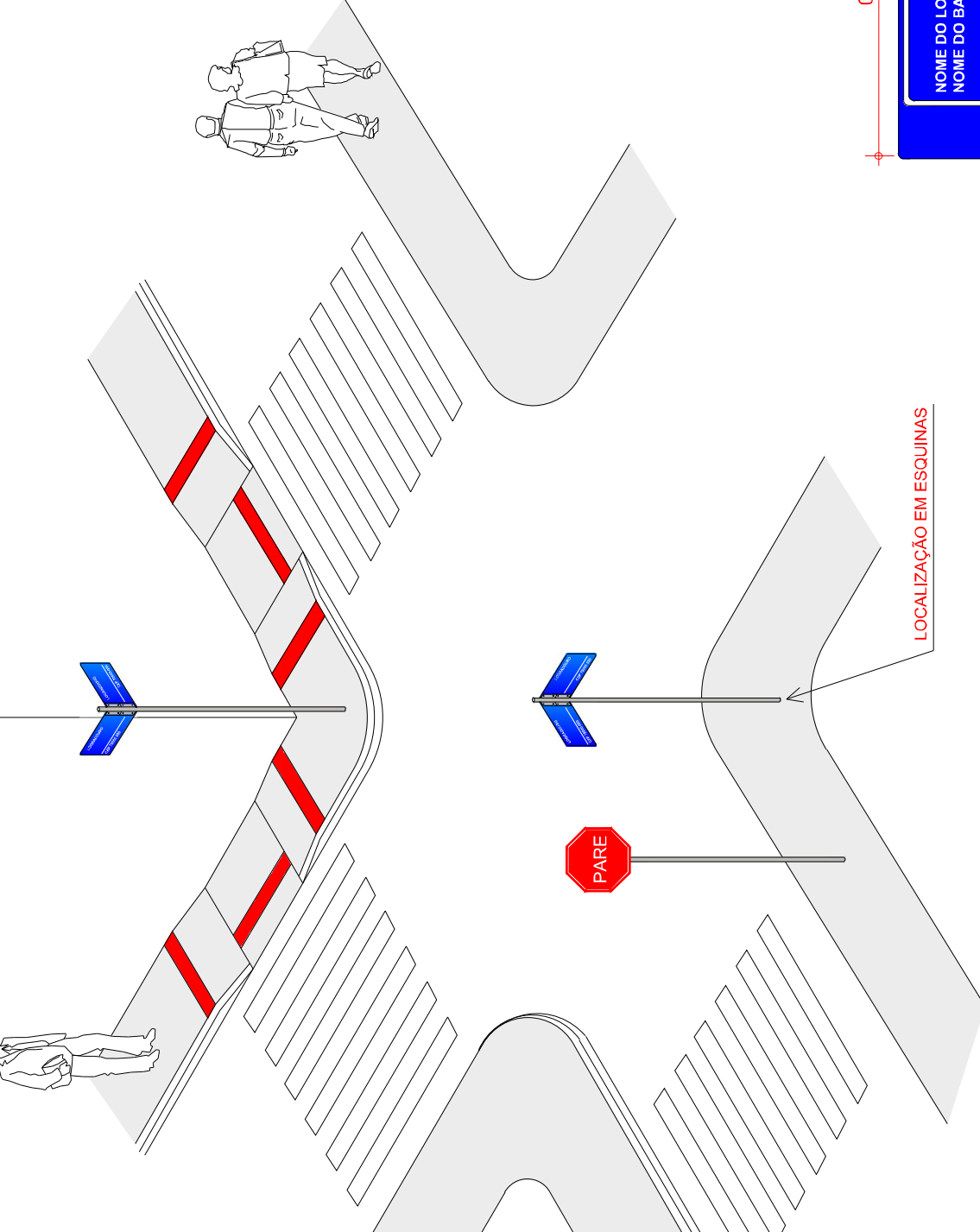
CORES

Fundo: Amarelo
Orla Interna: Preta
Orla Externa: Amarelo
Letras: Preto

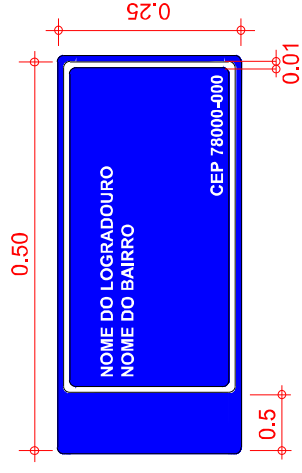
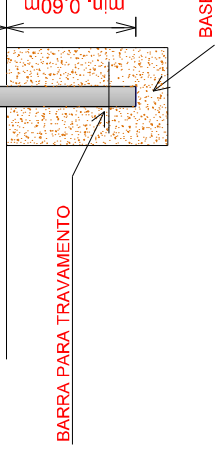
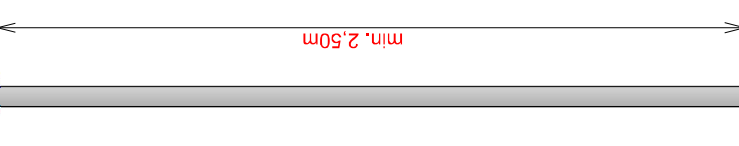
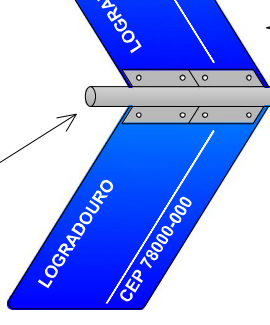
DIMENSÕES

Lado: 450 mm
Orla Interna: 18 mm
Orla Externa: 9 mm

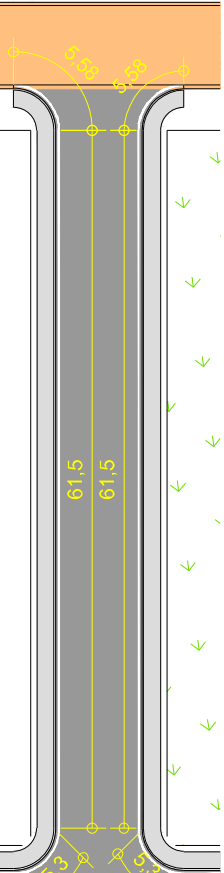




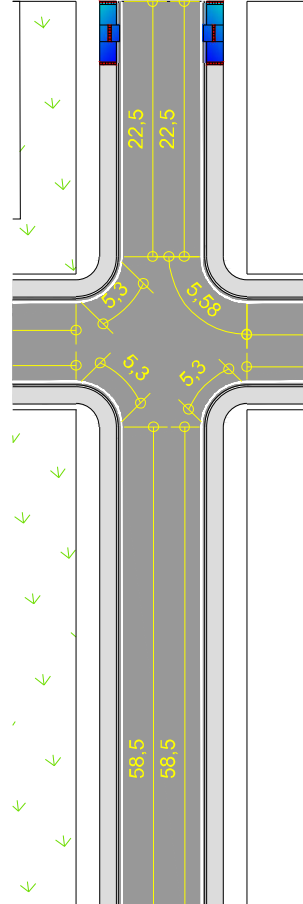
TUBO EM AÇO GALVANIZADO



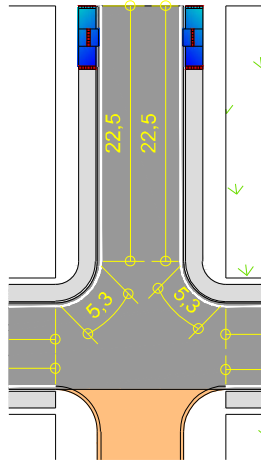
*CEP a ser fornecido pela Prefeitura municipal



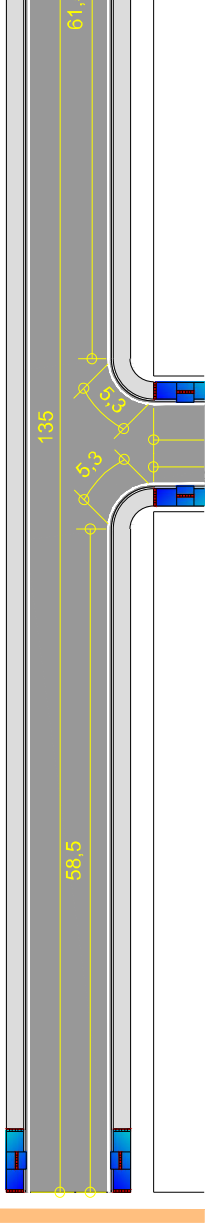
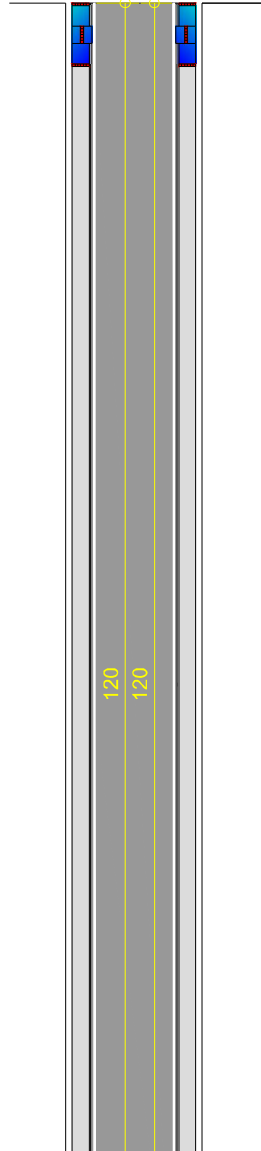
RUA D - TRECHO 2



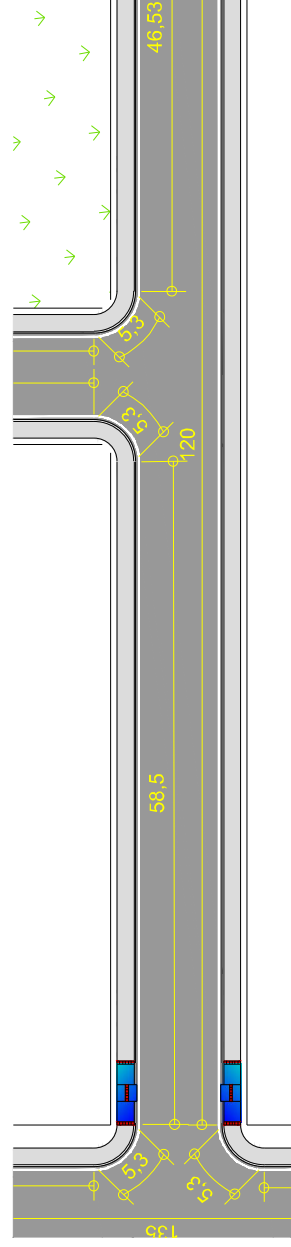
RUA E



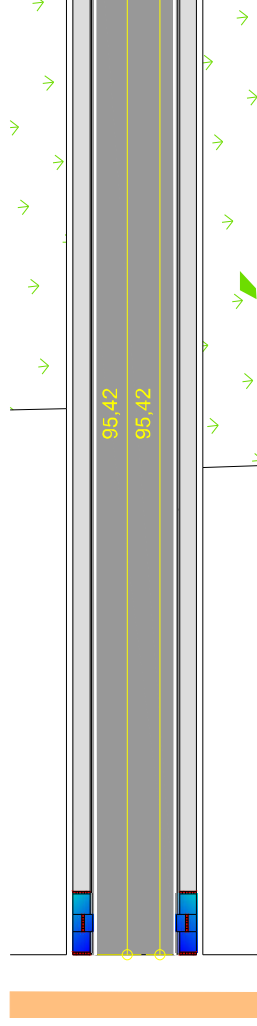
RUA P



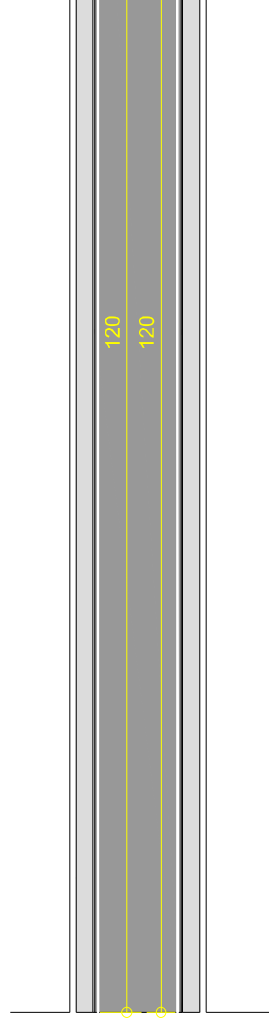
RUA F

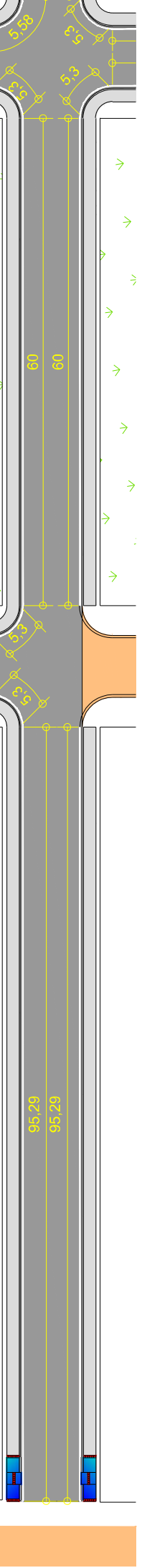


RUA O

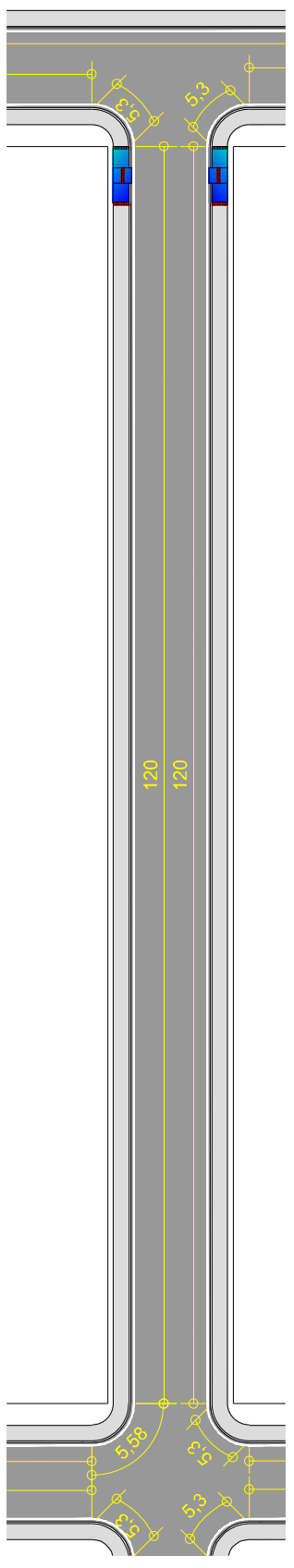


RUA Q

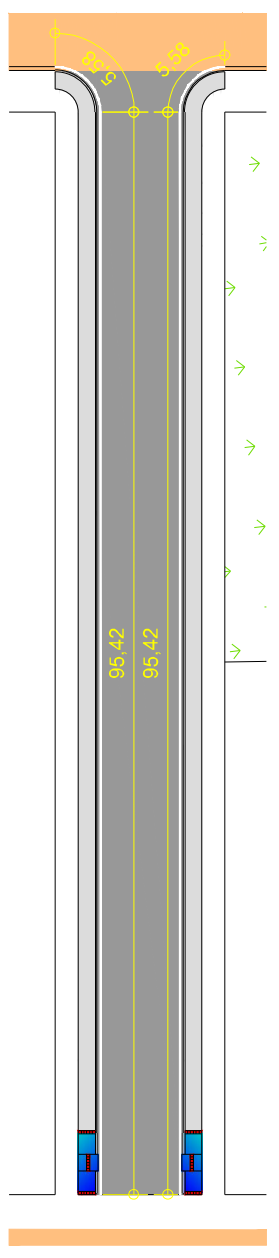




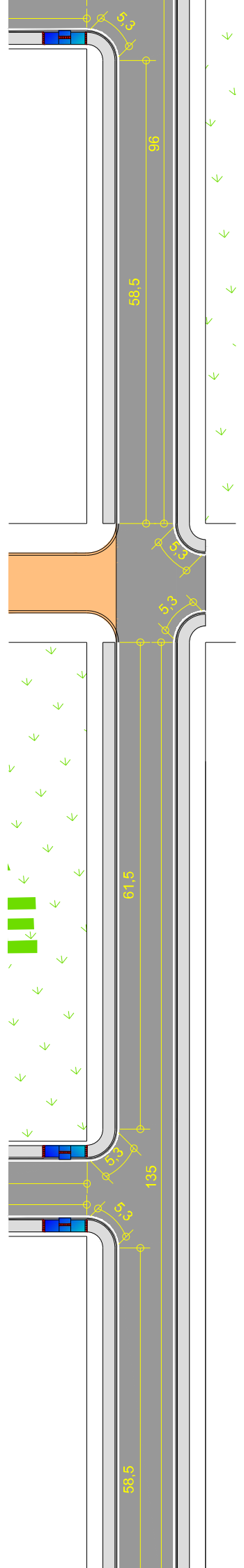
RUA R - TRECHO 2

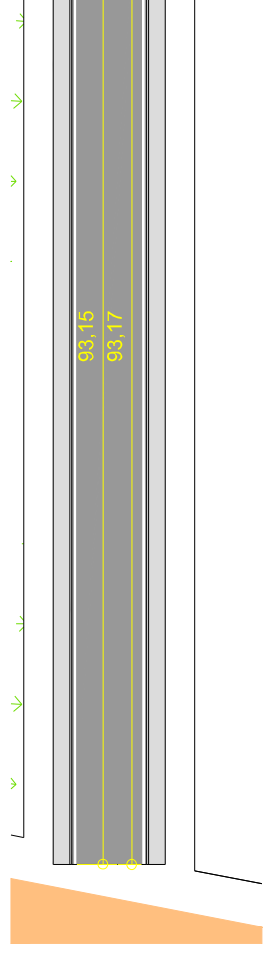


RUA OSVALDO ALAVAREZ

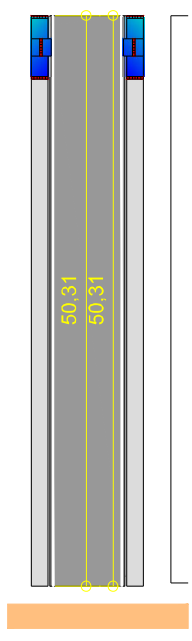


RUA MANOEL SOUZA

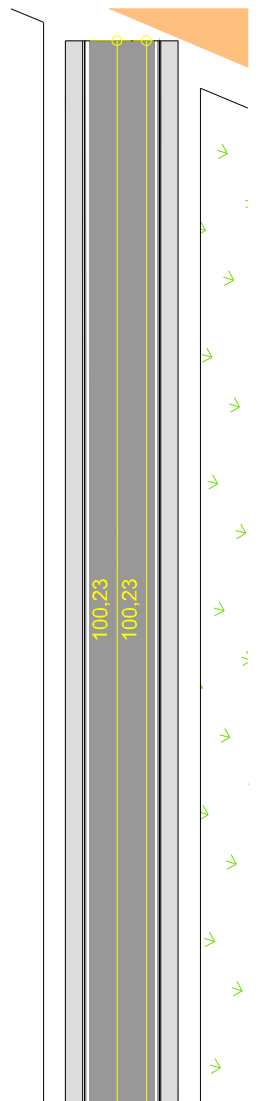
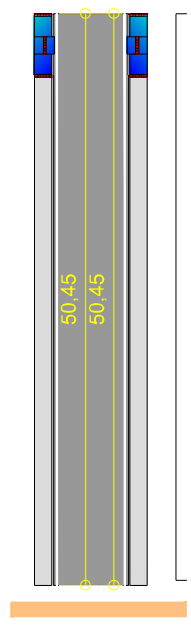




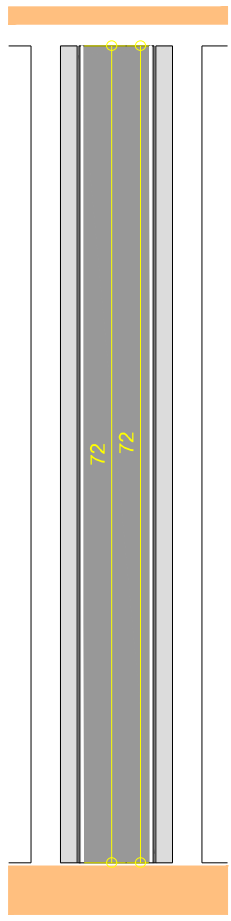
RUA PRINCESA ISABEL - TRECHO 2



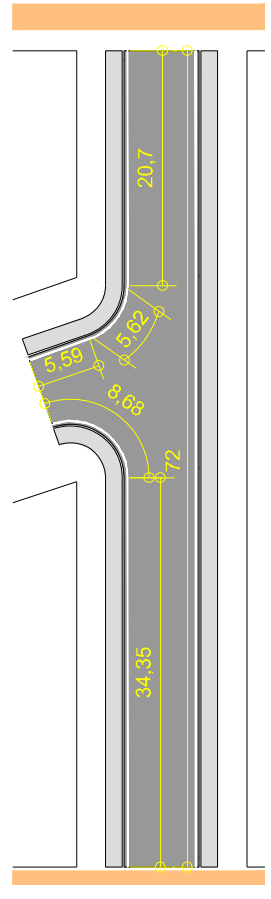
RUA CARLOS CHAGAS - TRECHO 2

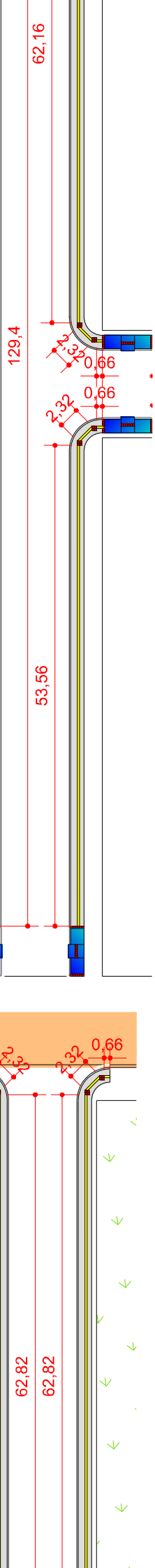


RUA PRINCESA ISABEL - TRECHO 1



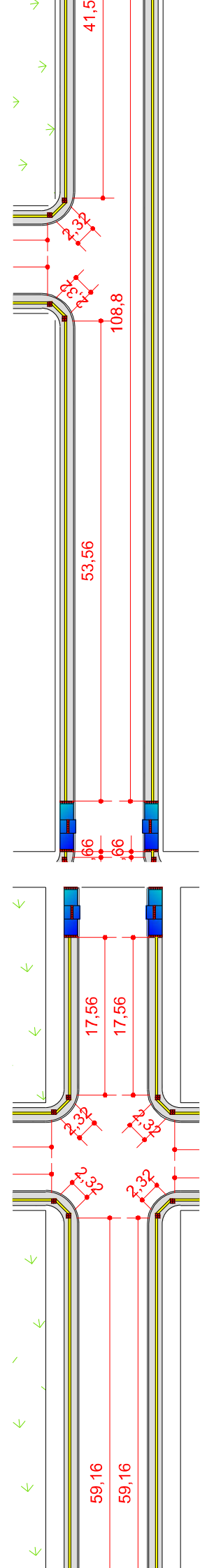
RUA CARLOS CHAGAS - TRECHO 1





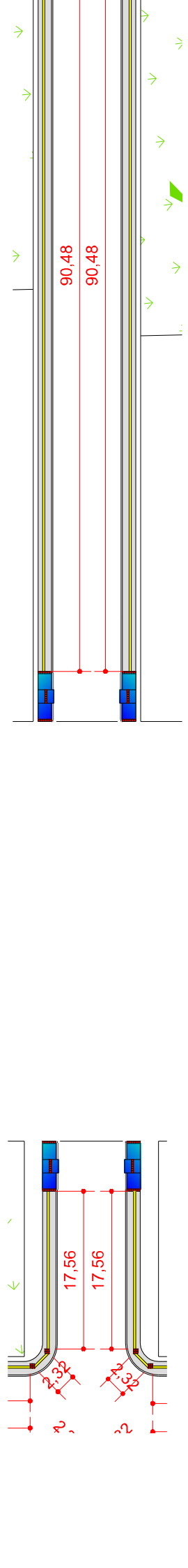
RUA F

RUA D - TRECHO 2

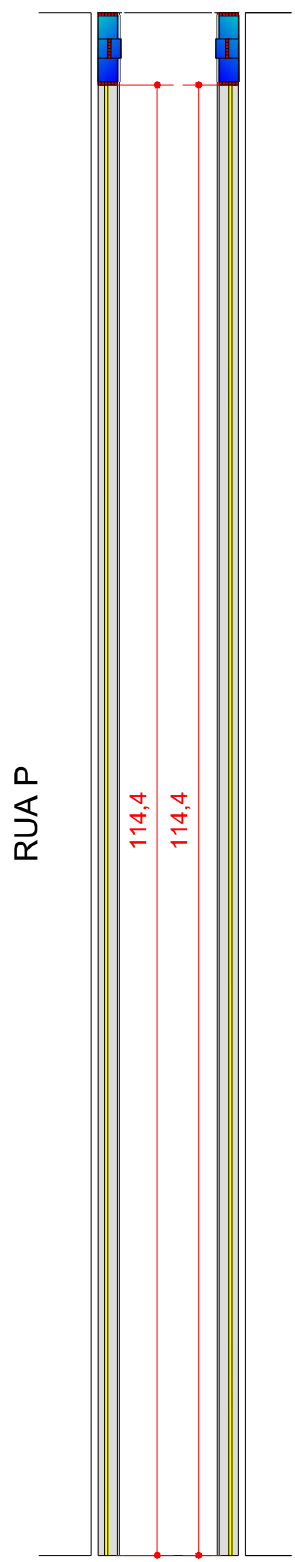


RUA O

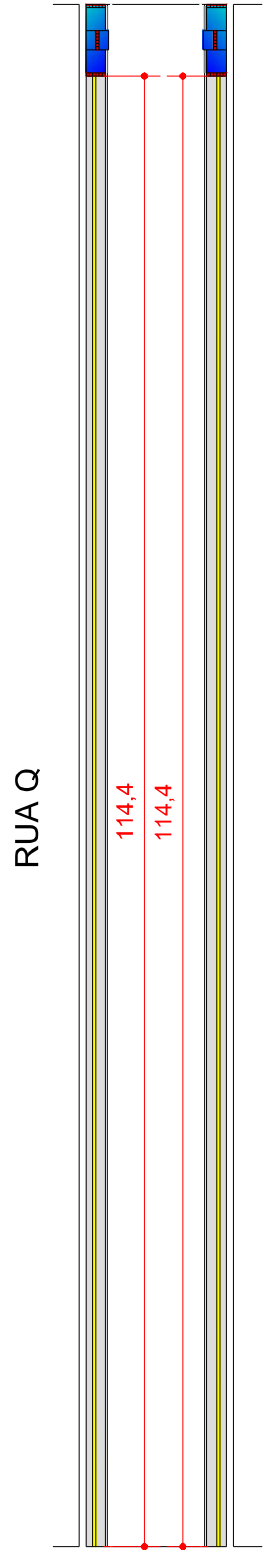
RUA E

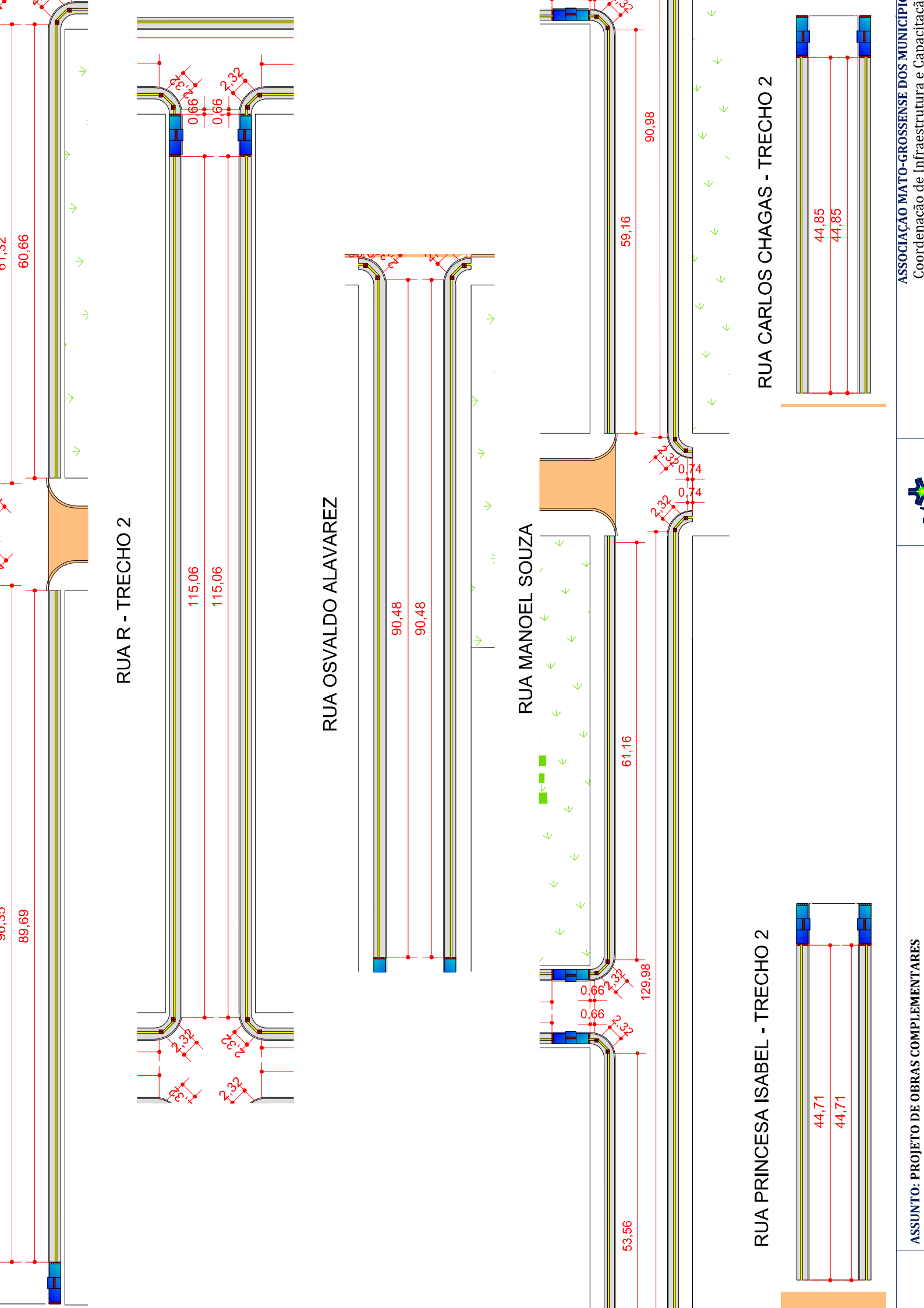


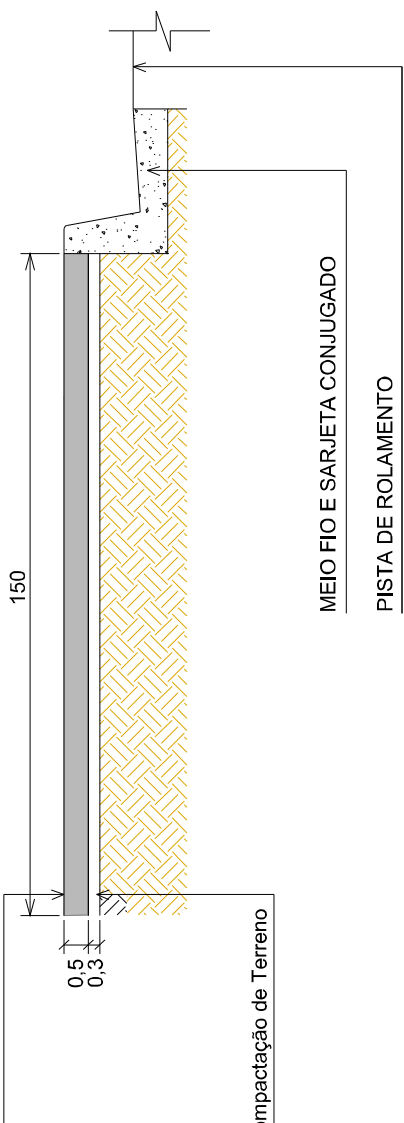
RUA P



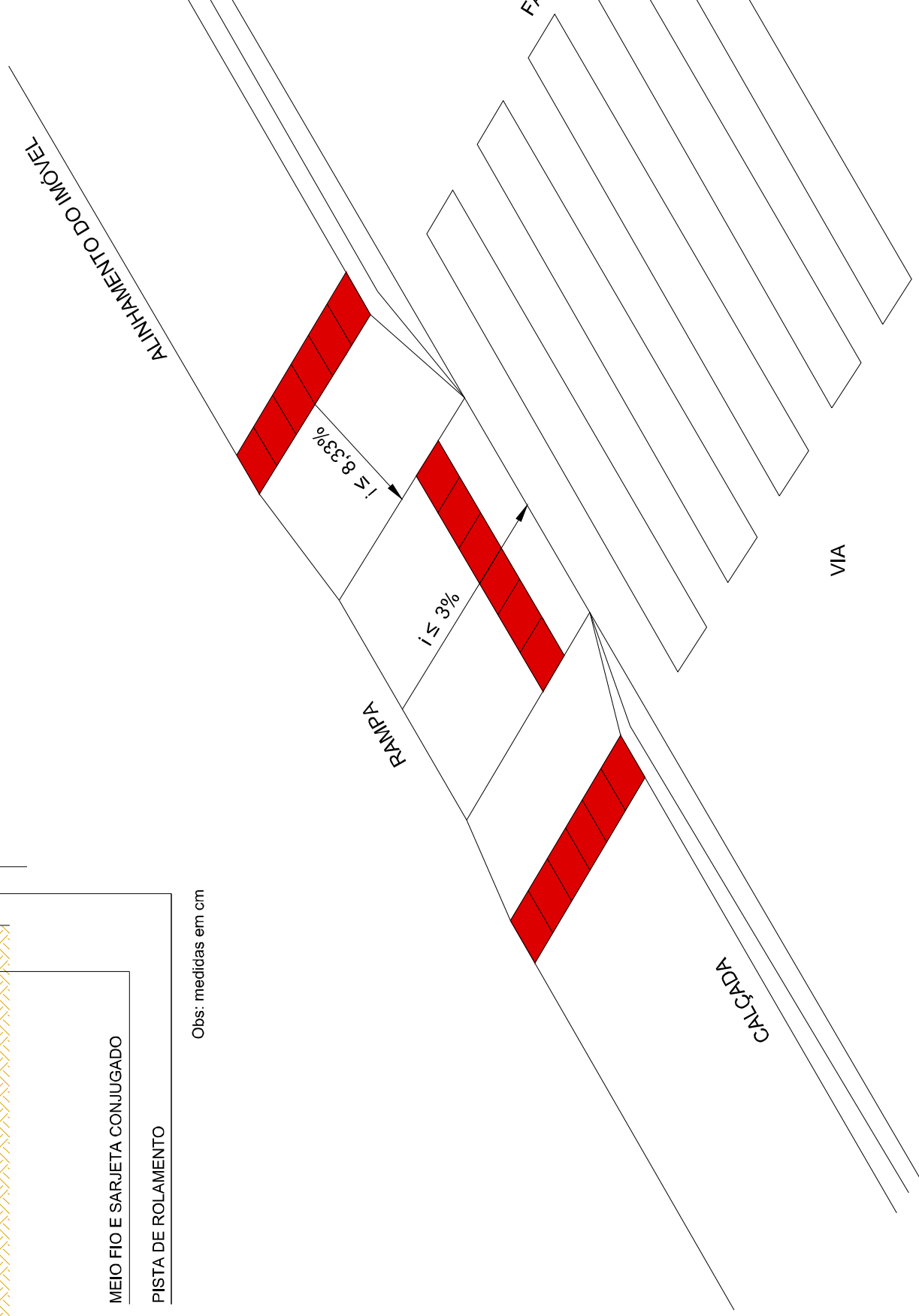
RUA Q

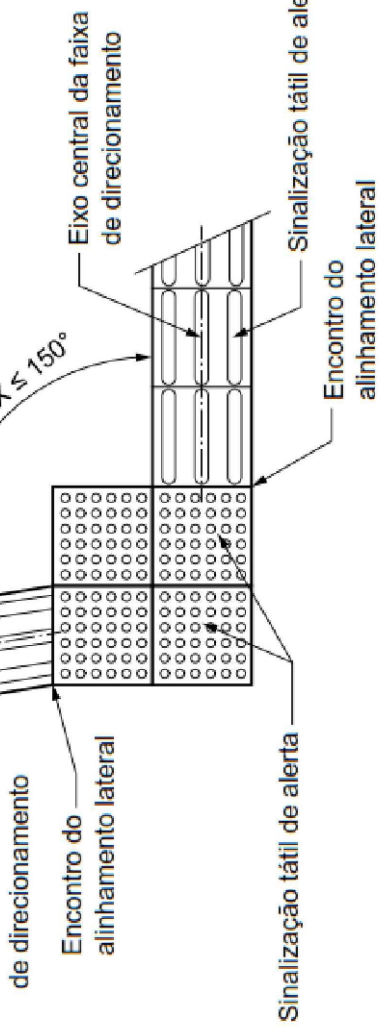




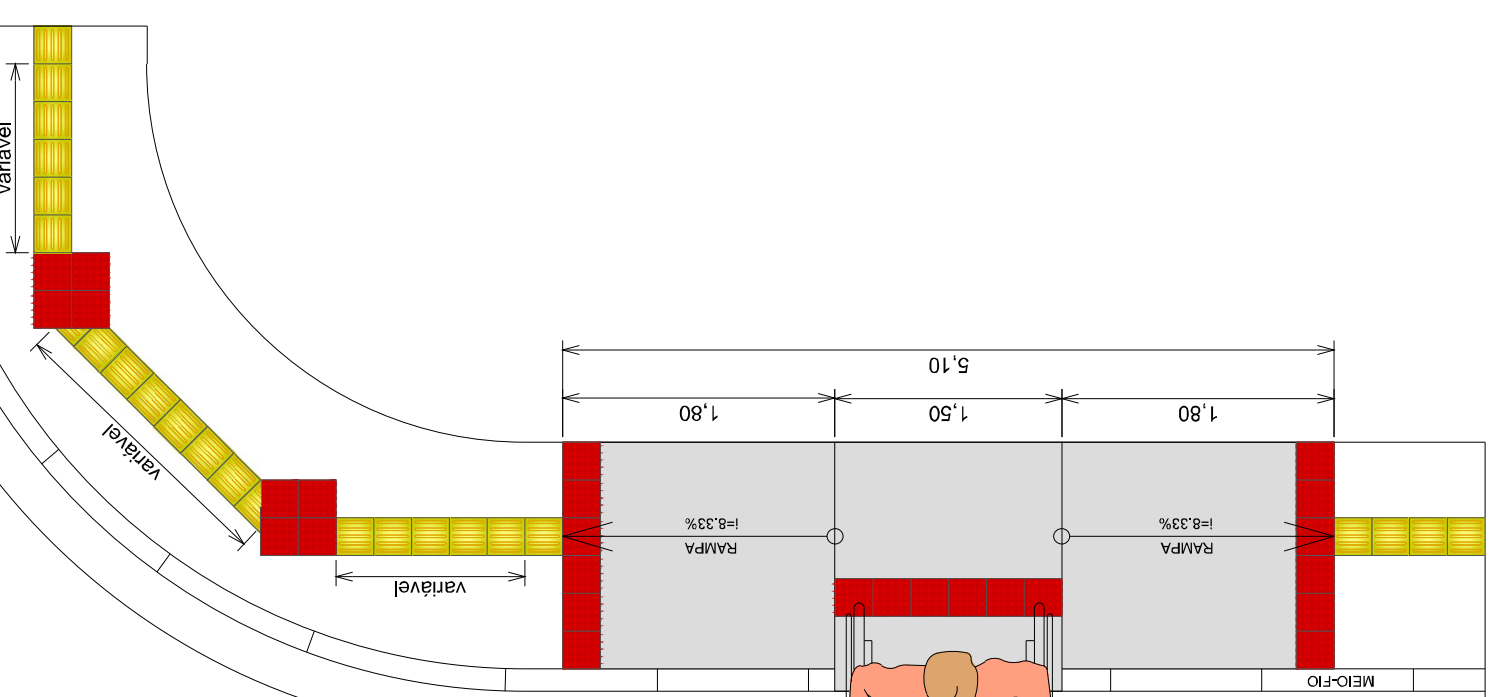


Obs: medidas em cm

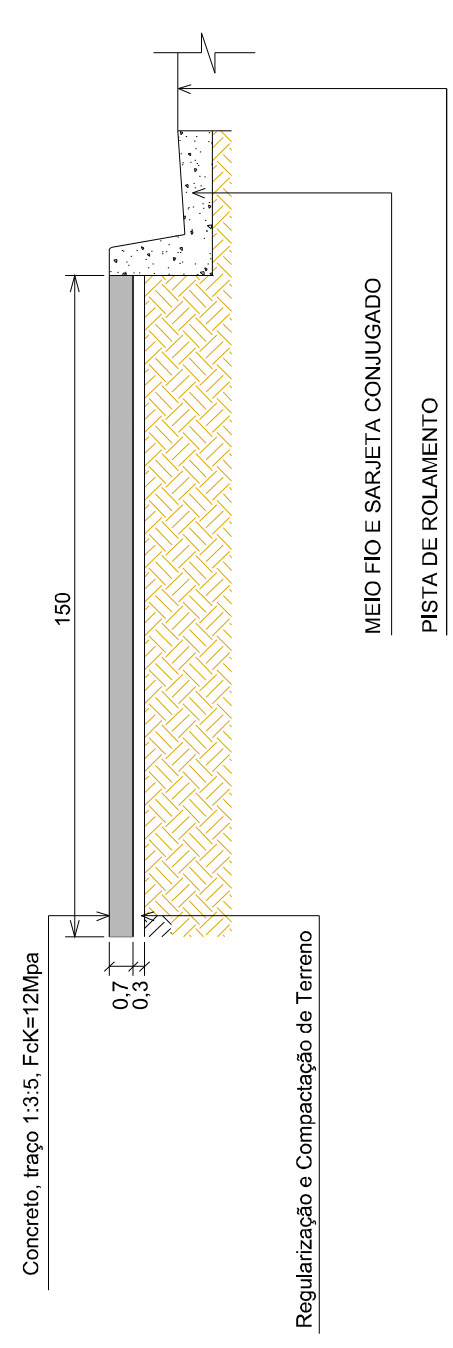




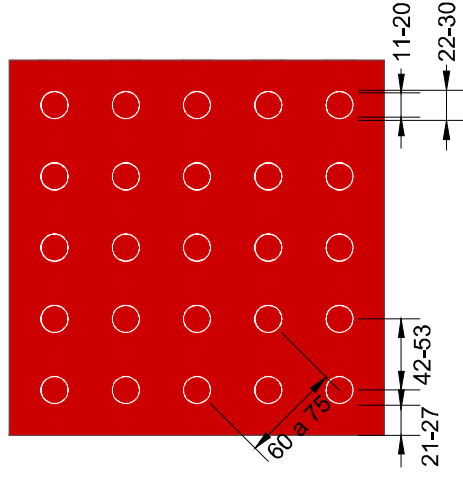
Conforme NBR11



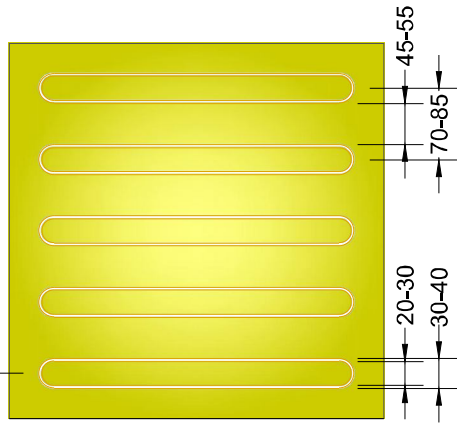
SEÇÃO TRANSVERSAL DA CALÇADA



Obs: medidas em cm



OBS: MEDIDAS EM CM



OBS: MEDIDAS EM CM

Dimensões da sinalização tátil de alerta:

	Mínimo mm	Máximo mm
Diâmetro de base do relevo	22	30
Distância horizontal entre os centros de relevo	42	53
Distância horizontal entre os centros de relevo	60	75
Distância horizontal entre bases de relevo	Entre 3 e 5	

Nota: Distância do eixo da primeira linha de relevo até a borda do piso = 1/2 distância horizontal entre os centros. Distância do eixo da primeira linha de relevo a borda do piso = 1/2 a 2/3 do diâmetro da base.

Dimensões da sinalização tátil direcional:

	Mínimo mm
Diâmetro de base do relevo	30
Largura do topo	20
Altura do relevo	Entre 3 e 5 (quando a altura do relevo for maior que a largura do relevo)
Distância horizontal entre centros de relevo	70
Distância horizontal entre bases de relevo	45

Nota: Distância do eixo da primeira linha de relevo a borda do piso = 1/2 distância horizontal entre centros de relevo.