

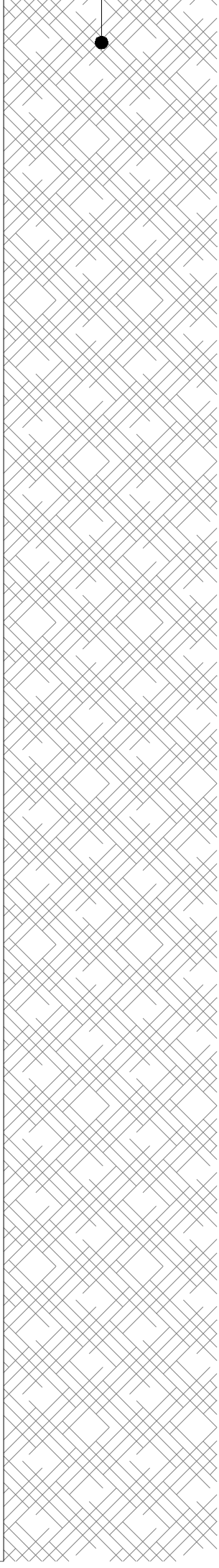
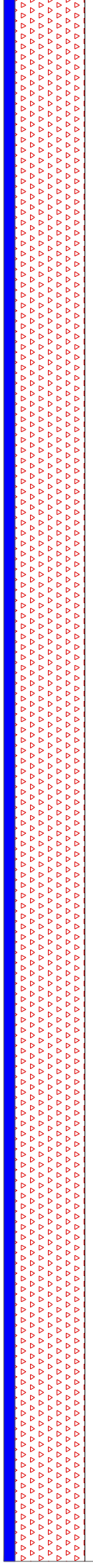
TRECHO DA RUA A SER PAVIMENTADO

extensão variável

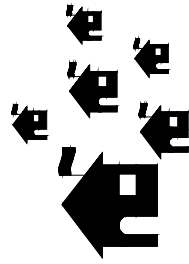
EST. 0

Início da Rua

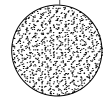
EST. FIN
Final da



ARAPUTANGA



1,00 km

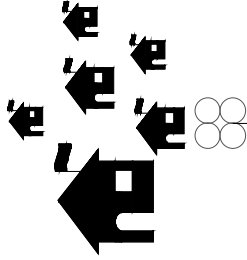


1,00 km

3,60 km

42,00 km

MIRASSOL D'OESTE



27,00 km

276,00 km

LEGENDA		COORD. GEOGRÁFICAS	DMT
	MATERIAL BETUMINOSO	—	345,00 Km
	TUBOS DE CONCRETO	—	42,00 Km
	BOTA-FORA	15°28'21.8" S 58°20'39.6" O	1,50 Km
	JAZIDA	15°26'29.02 S 58°19'59.71" O	4,60 Km
	PEDREIRA	15°50'45.34" S 58°9'14.12" O	70,00 Km



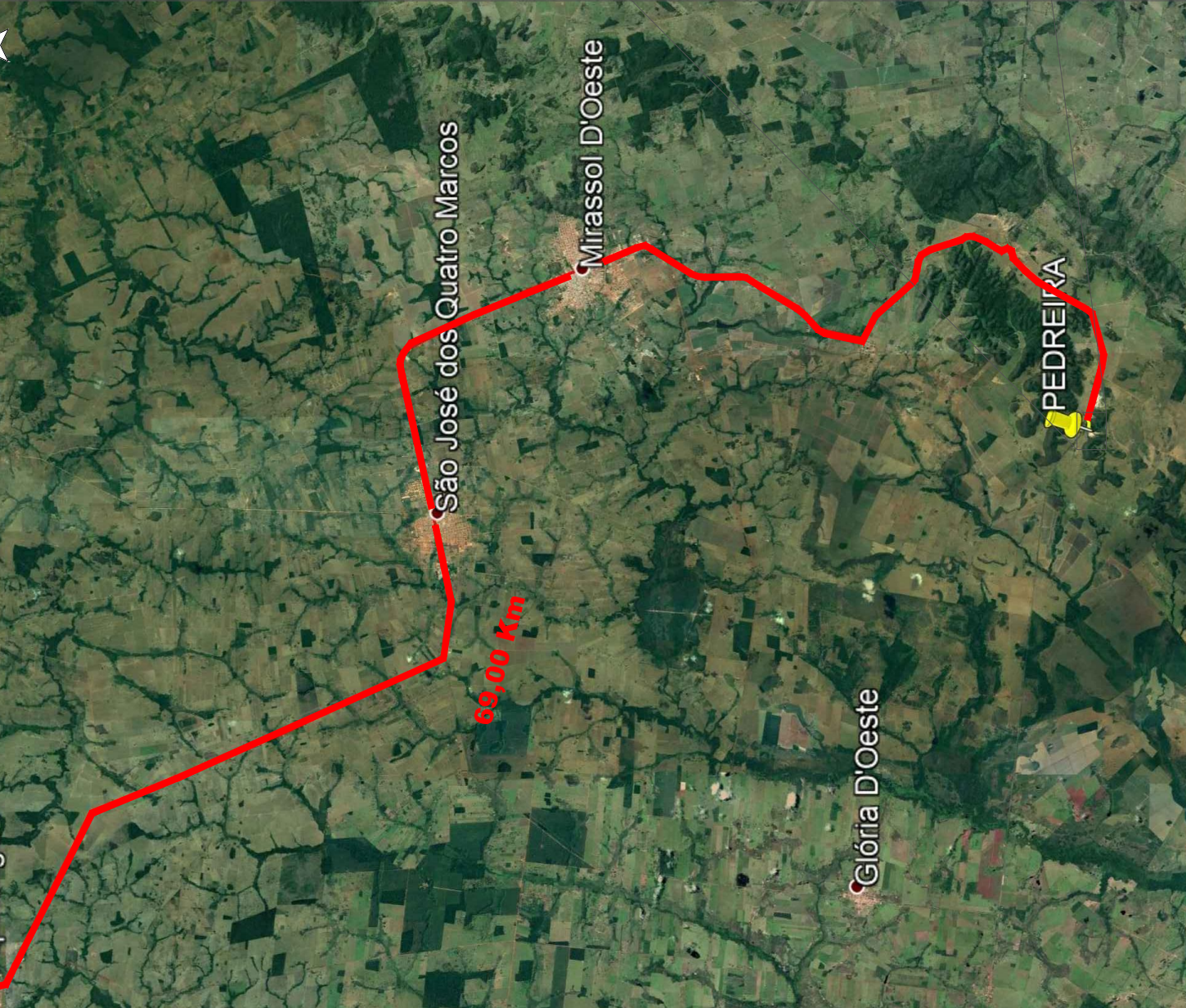
DMT:
1,00 Km em via pavimentada





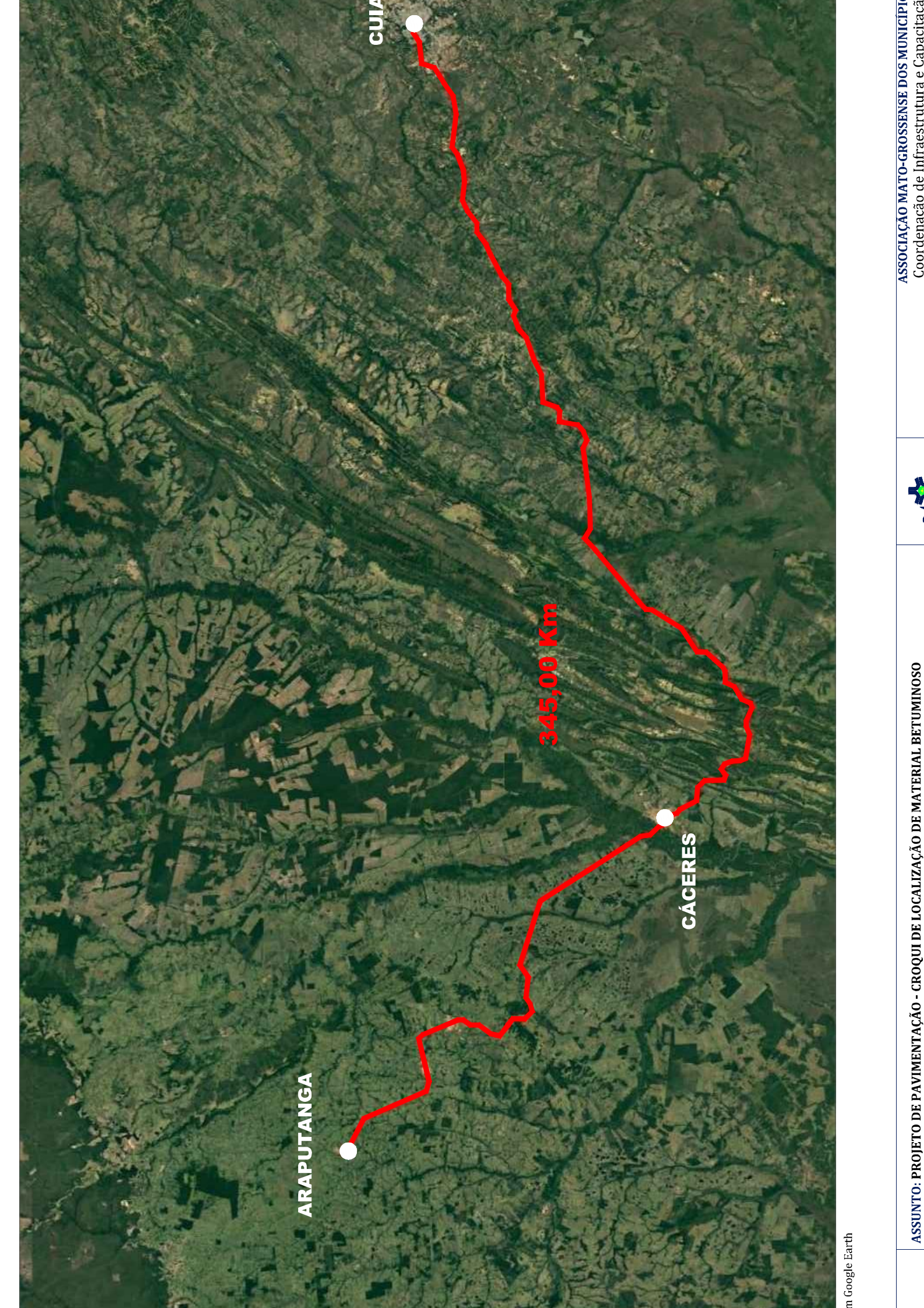
Coordenadas
15°26'33"
58°19'55"

DMT:
3,60 Km em via pavimentada
1,00 Km em via não pavimentada



DMT:
69,00 Km em via pavimentada



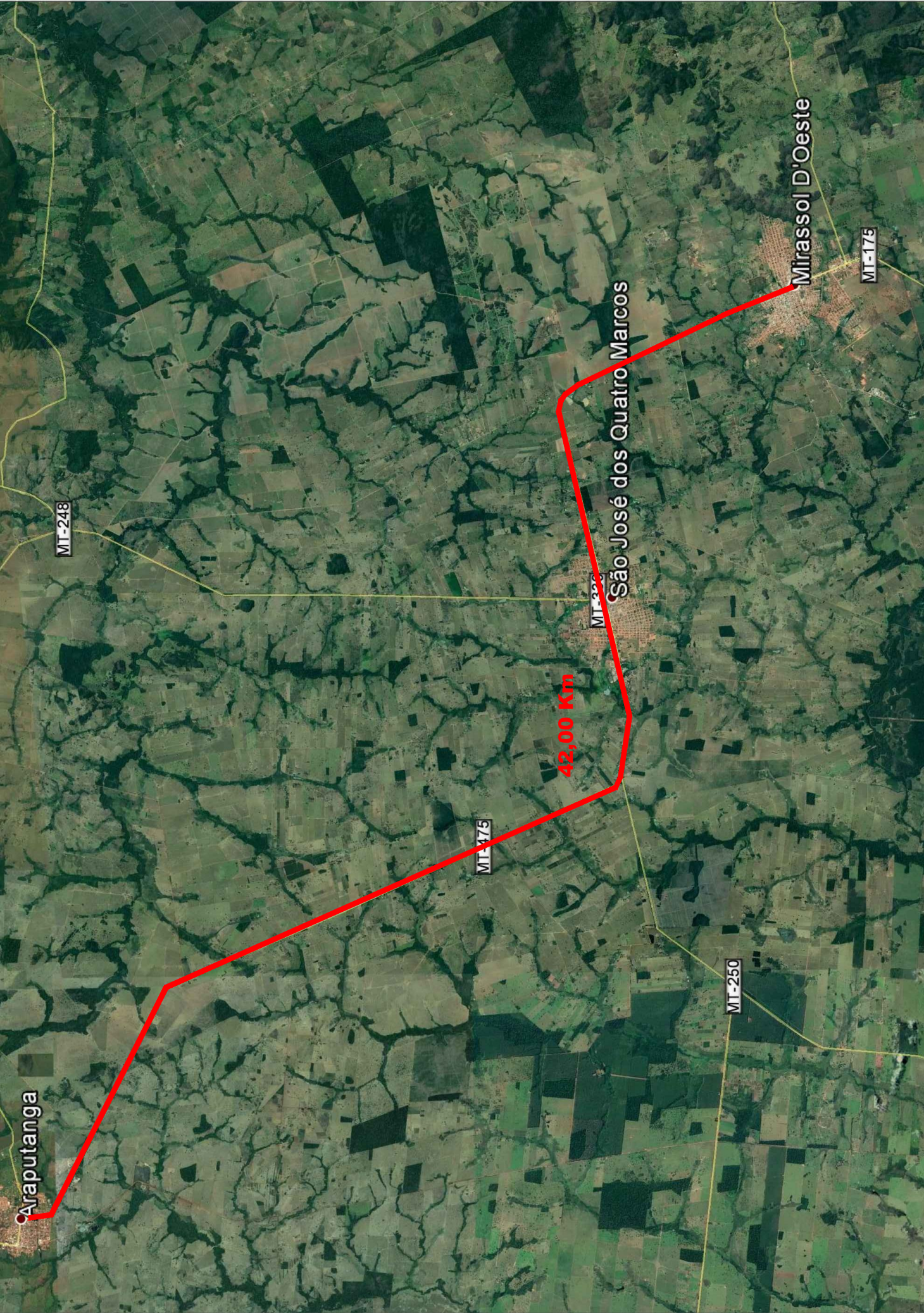


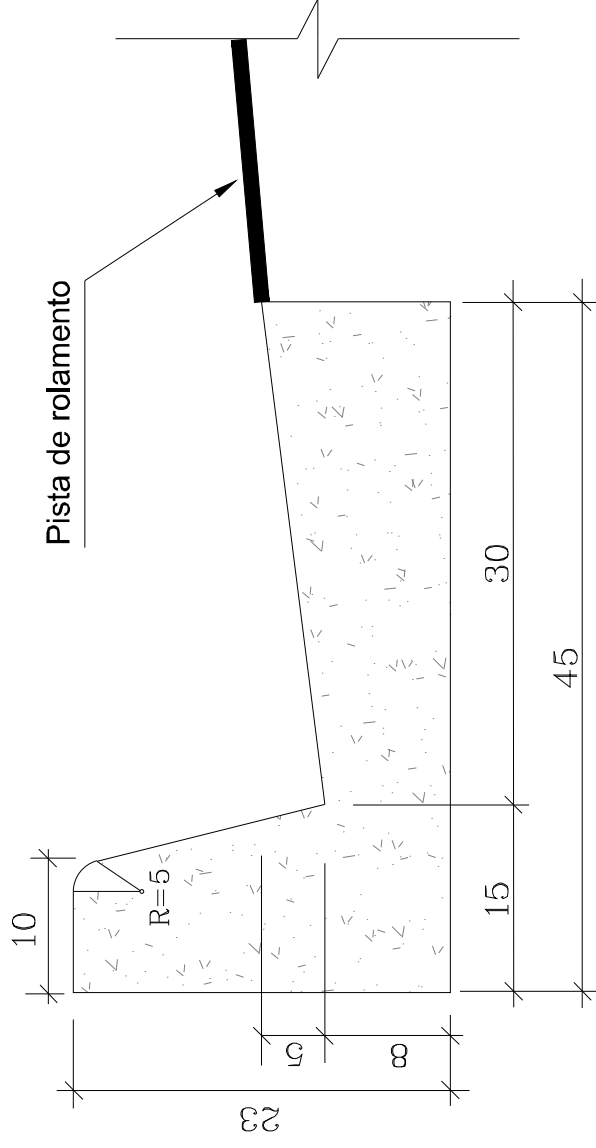
ARAPUTANGA

CÁCERES

CUIABÁ

345,00 Km

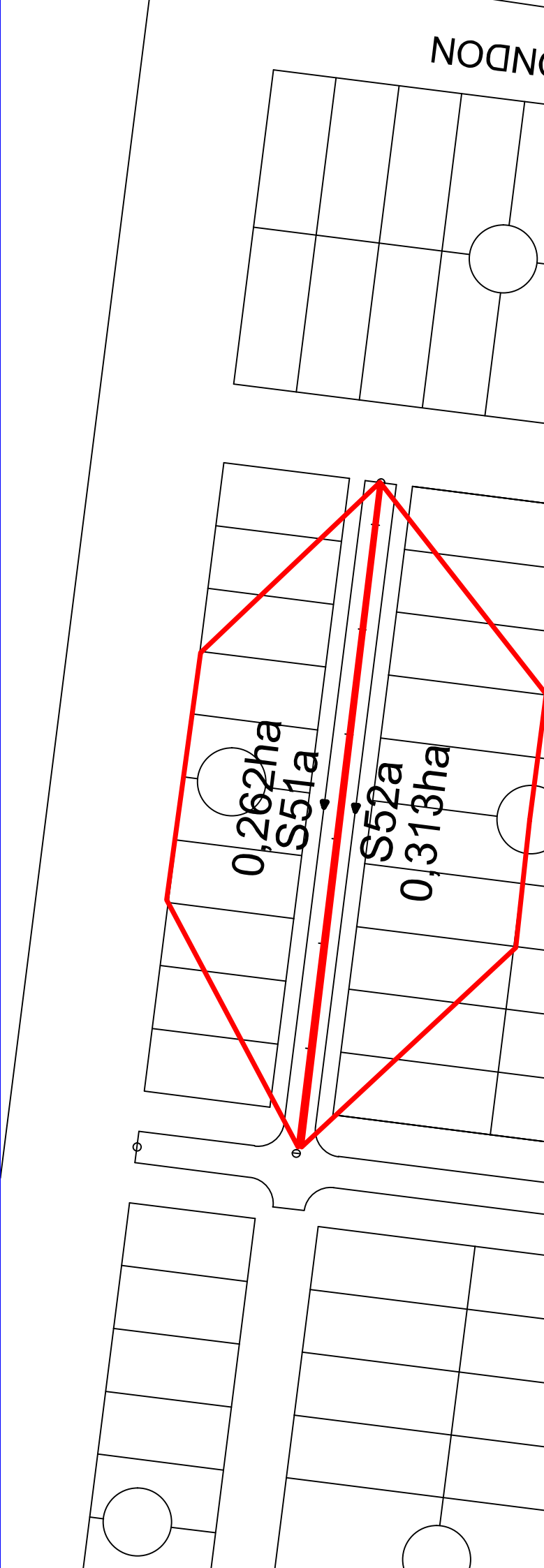
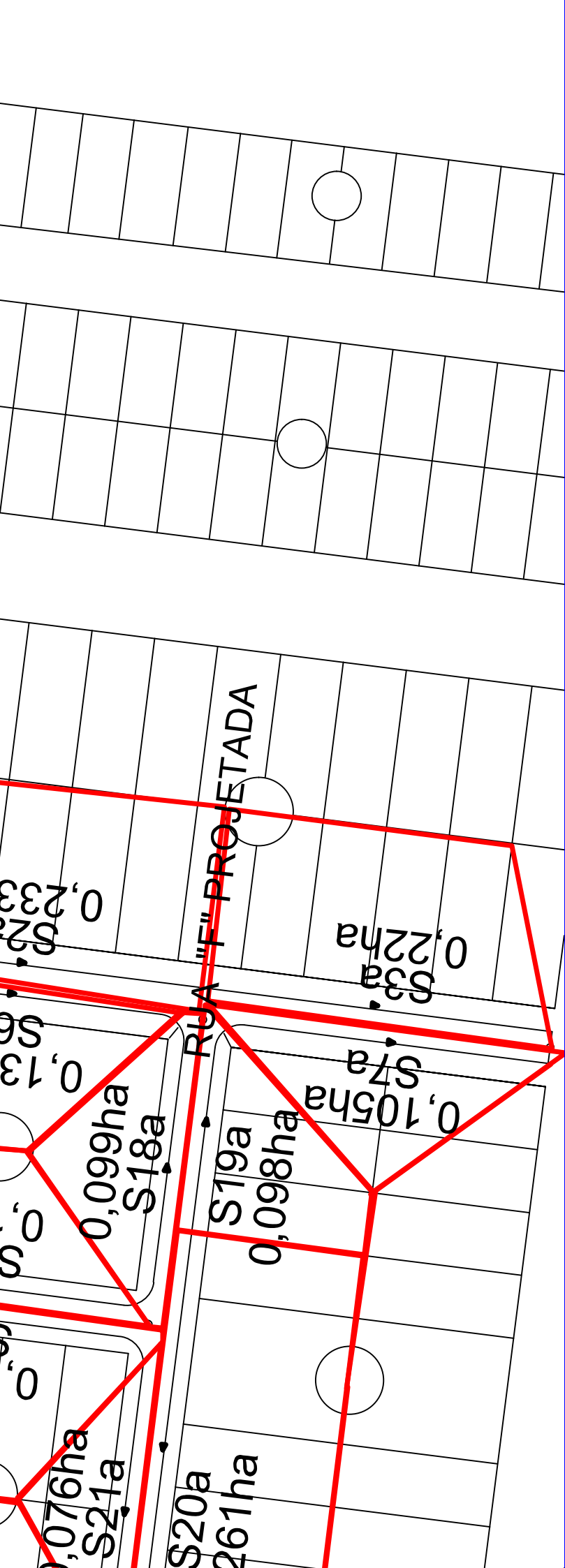


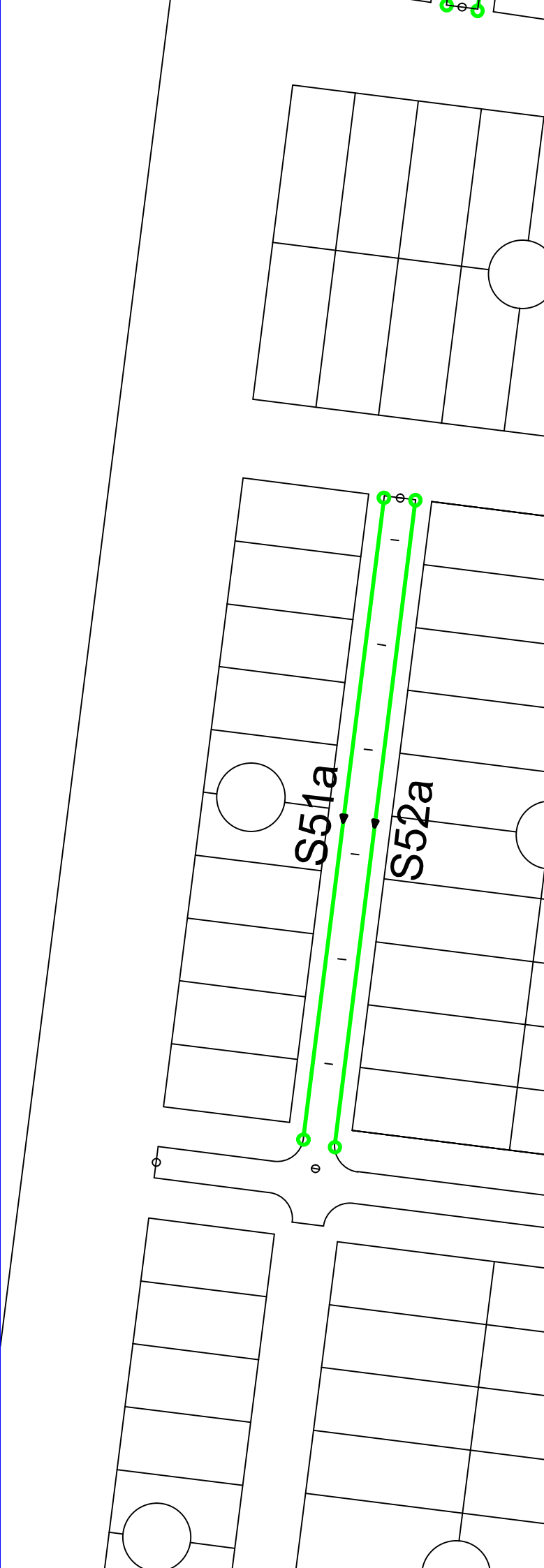
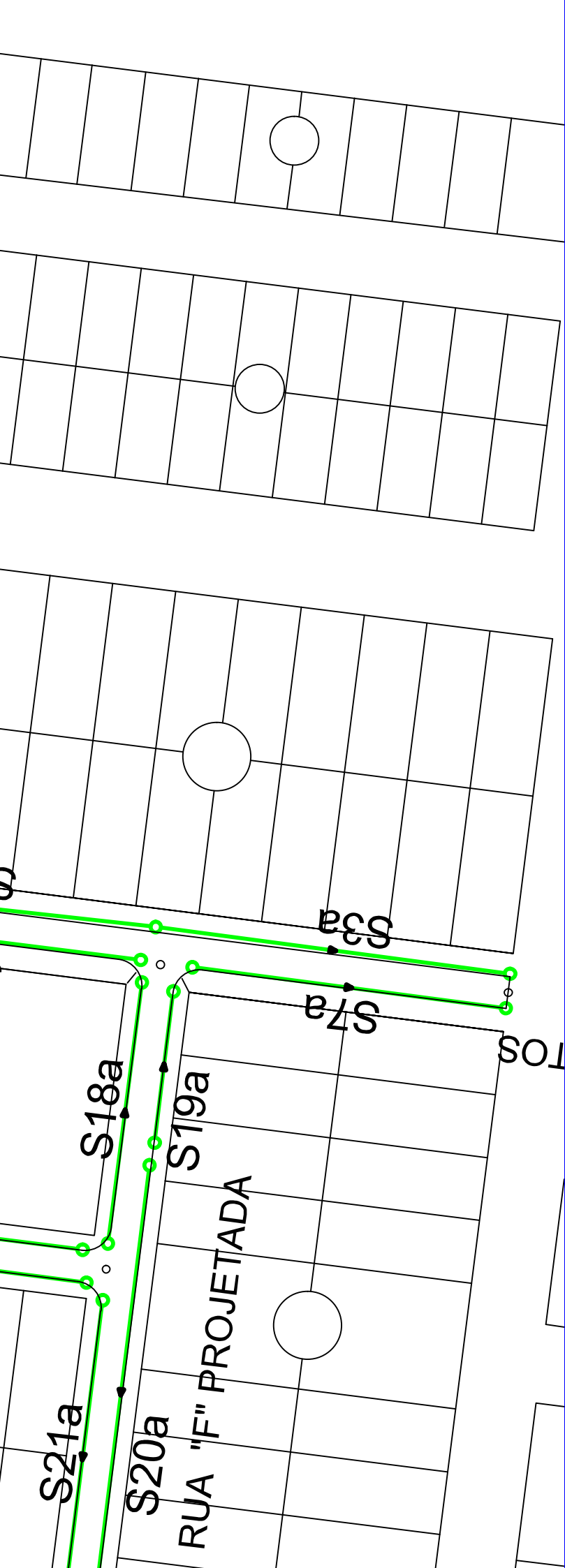


Cm;

o fios serão pré moldados ou moldados "in loco" por extrusão (formas deslizantes);

de formas indicadas aplicam-se ao caso de meios-fios moldados "in loco" por processo convencional.





RUA PRESIDENTE

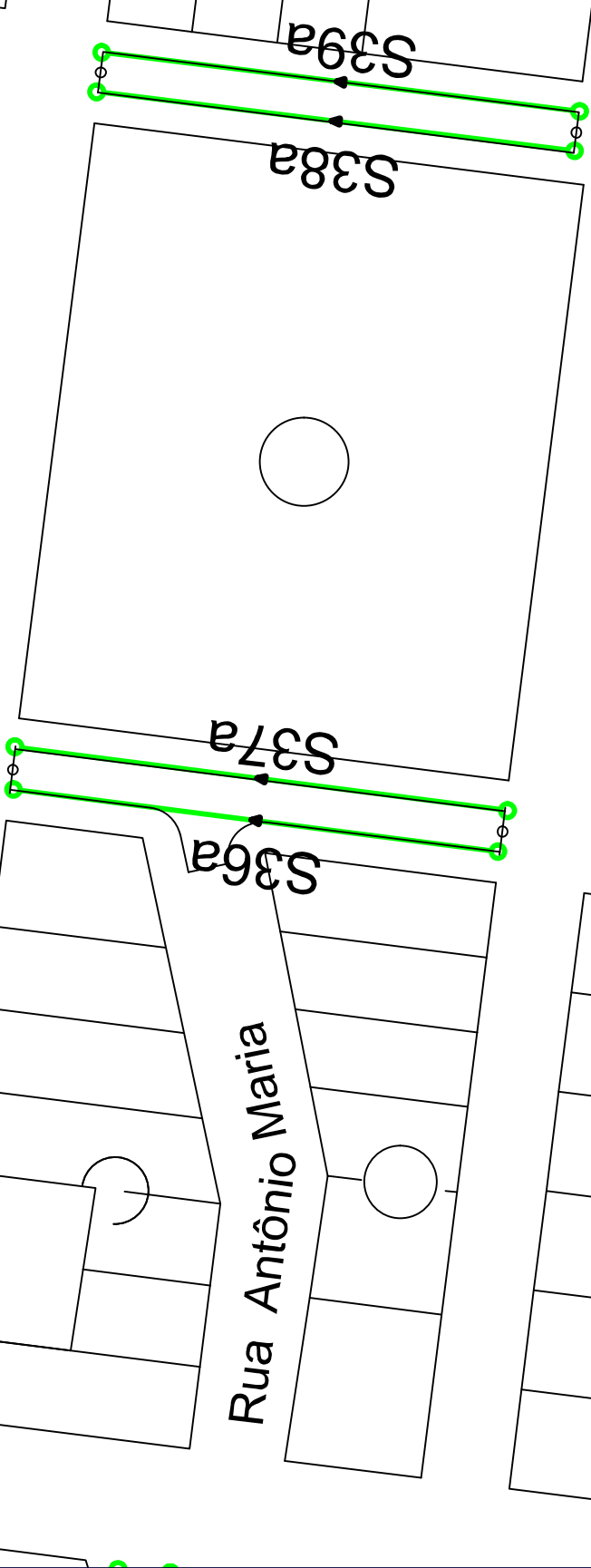
Rua Antônio Maria

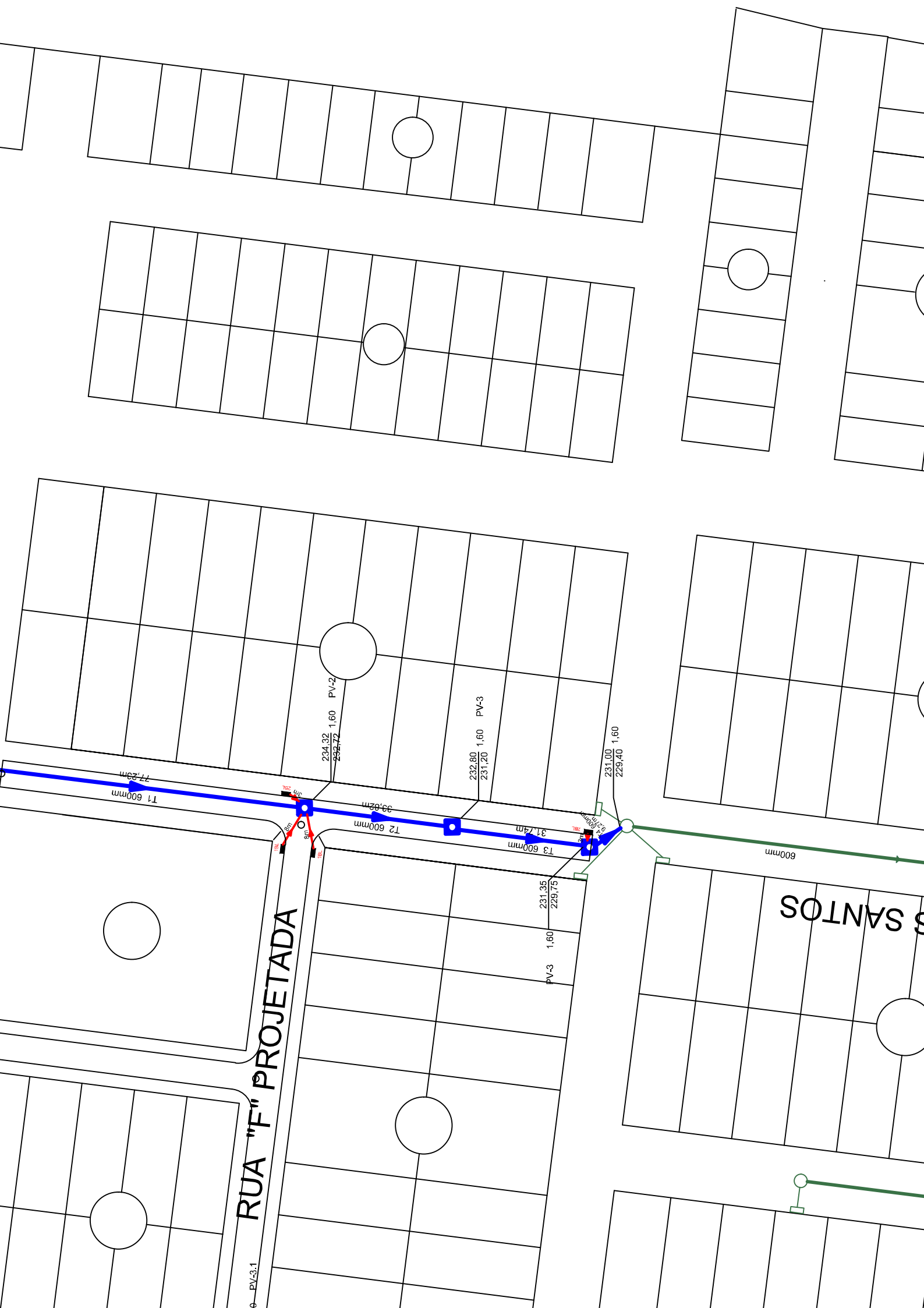
S36a

S37a

S38a

S39a





NOTAS:
1 – Dimensões em cm;

POÇOS DE VISITA COM DISPOSITIVO INTERNO DE QUEDA DE 50cm											
PVI04	100	25	150	–	130	130	100	19,64	22,9	2.480	
PVI05	120	25	170	–	150	150	120	23,62	25,7	2.890	
PVI06	150	25	200	–	180	180	150	30,19	31,6	3.500	
POÇOS DE VISITA COM DISPOSITIVO INTERNO DE QUEDA DE 100cm											
PVI07	40	20	130	25	80	130	90	17,85	17,0	2.030	
PVI08	60	20	130	15	80	130	90	17,85	17,0	1.970	
PVI09	80	25	140	5	100	150	90	19,48	17,5	2.420	
PVI10	100	25	150	–	130	180	100	20,57	22,9	2.840	
PVI11	120	25	170	–	150	200	120	26,77	25,7	3.270	
PVI12	150	25	200	–	180	230	150	33,64	31,6	3.920	
POÇOS DE VISITA COM DISPOSITIVO INTERNO DE QUEDA DE 150cm											
PVI13	40	20	130	25	80	180	90	20,65	17,0	2.360	
PVI14	60	20	130	15	80	180	90	20,65	17,0	2.300	
PVI15	80	25	140	5	100	200	90	22,33	17,5	2.800	
PVI16	100	25	150	–	130	230	100	25,54	22,9	3.240	
PVI17	120	25	170	–	150	250	120	29,92	25,7	3.690	
PVI18	150	25	200	–	180	280	150	37,09	31,6	4.380	

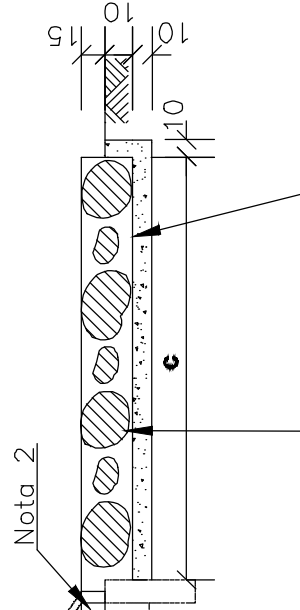
A

∅ 12,5–185

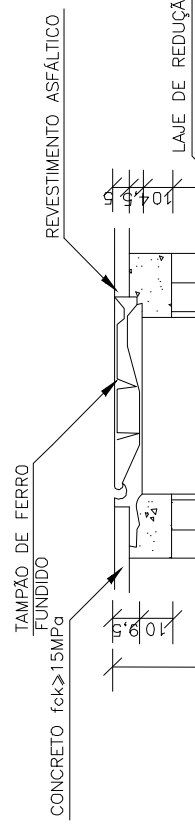
8,3–85c/15

ENERGIA (II) S E DESCIDAS D'ÁGUA DE ATERROS - DEB

CORTE AA'



CORTE TRANSVERSAL



CHAMINÉ DOS

DEB

∅ 12,5-CA-50



RUA OSVALDO ALVAREZ DE CAMPOS

RUA E PROJETADA

RUA R

ÁREA VERDE

RUA O

ÁREA VERDE II

POÇO SÃO FRANCISCO

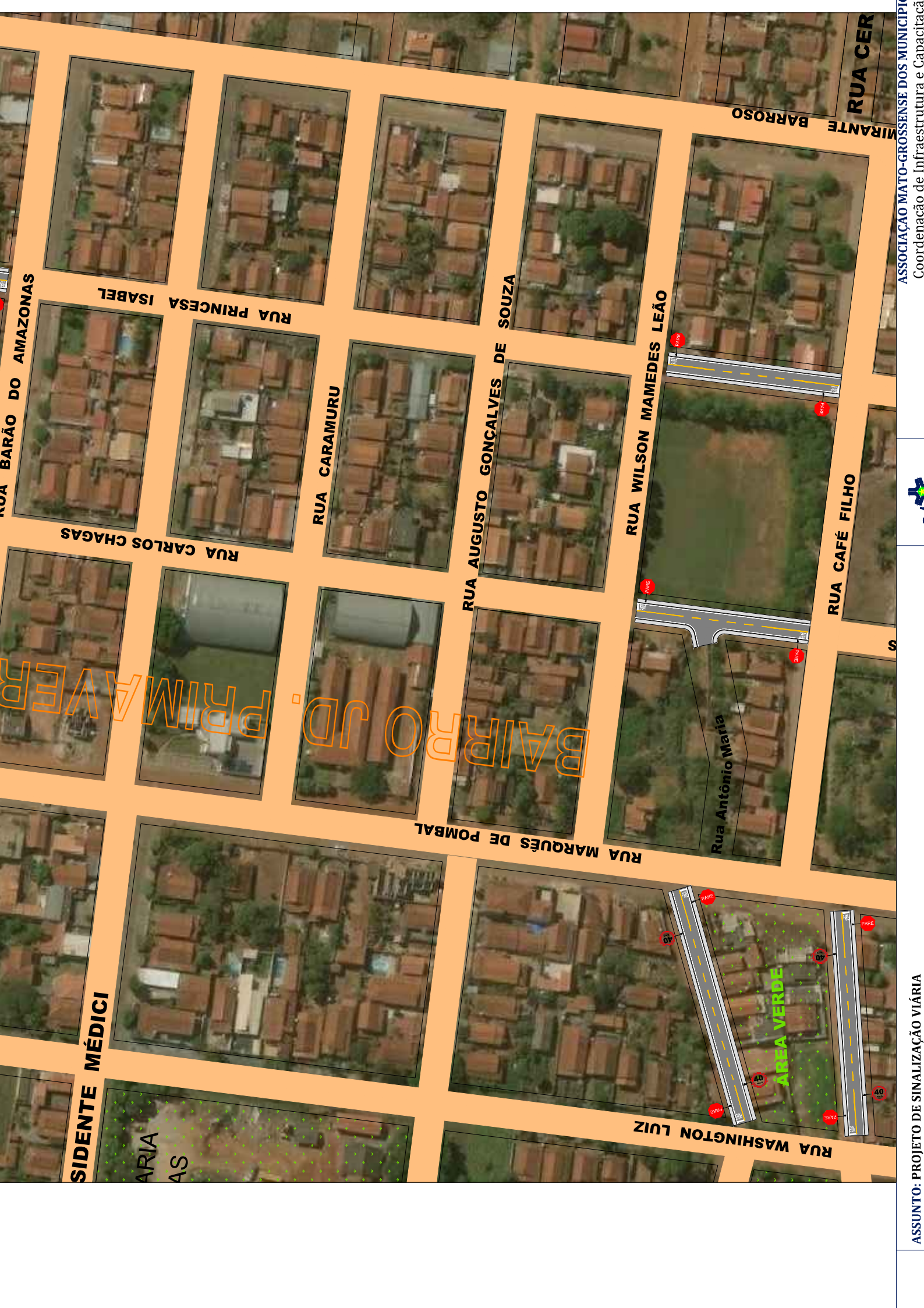
RUA D

RUA C

RUA F

RUA D

RUA MARANHÃO



SIDENTE MÉDICI

ARIA
AS

RUA WASHINGTON LUIZ

ÁREA VERDE

RUA MARQUÊS DE POMBAL

Rua Antônio Maria

RUA WILSON MAMEDES LEÃO

RUA CAFÉ FILHO

RUA AUGUSTO GONÇALVES DE SOUZA

RUA CARAMURU

RUA PRINCESA ISABEL

RUA CARLOS CHAGAS

RUA BARÃO DO AMAZONAS

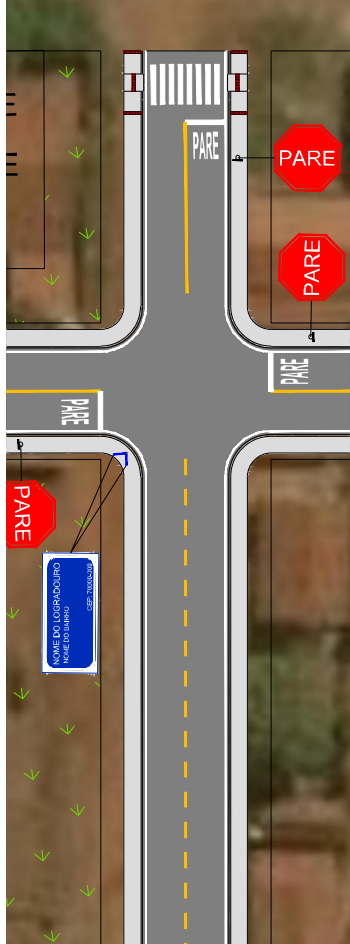
MIRANTE BARROSO

RUA CER

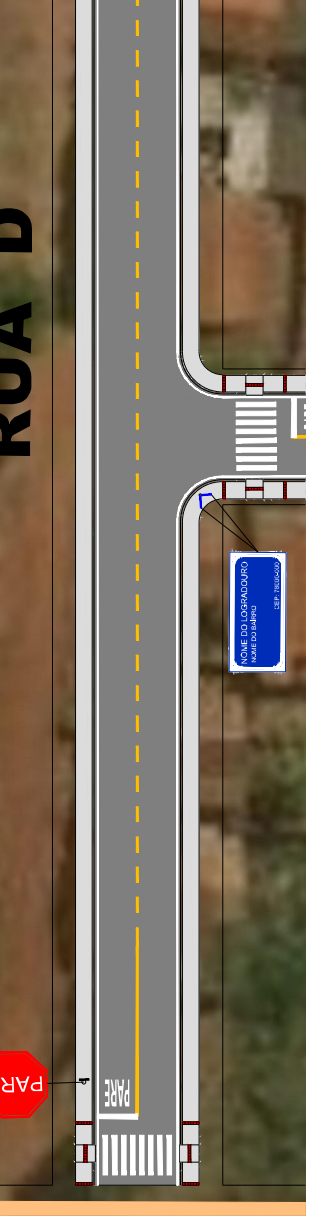
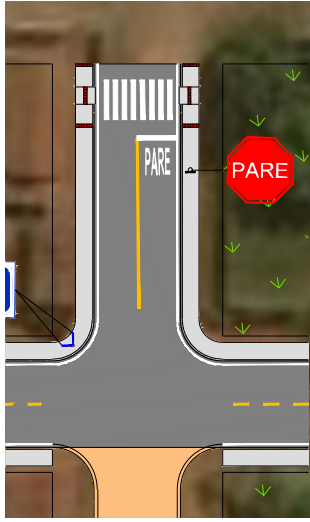




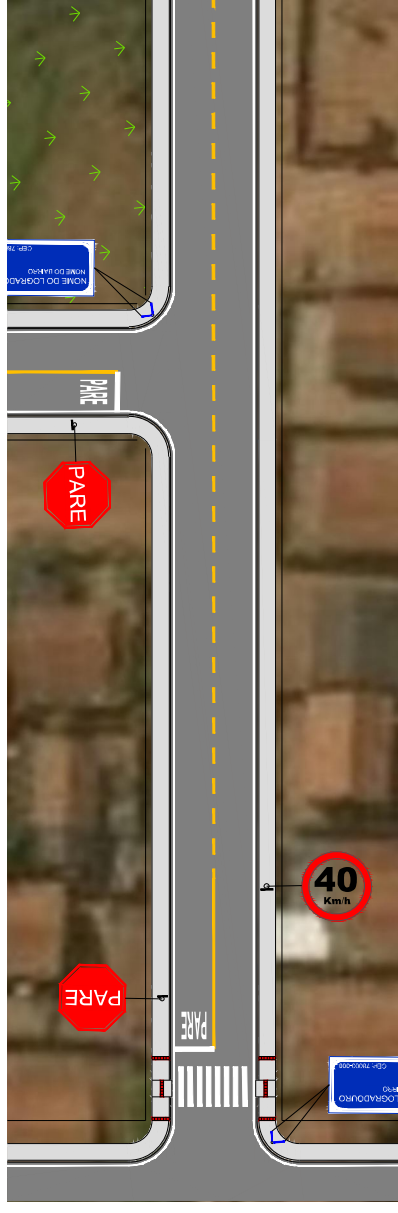
RUA D - TRECHO 2



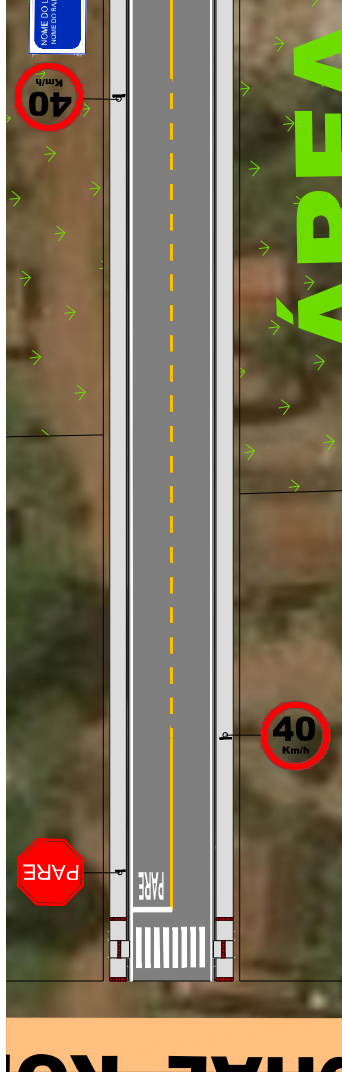
RUA E

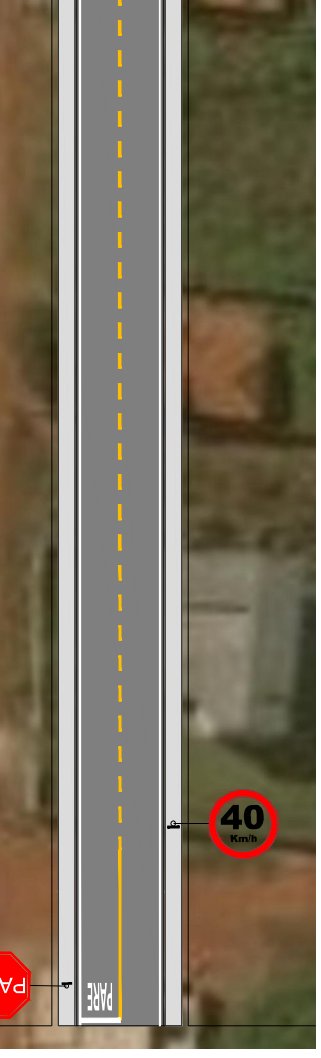


RUA F

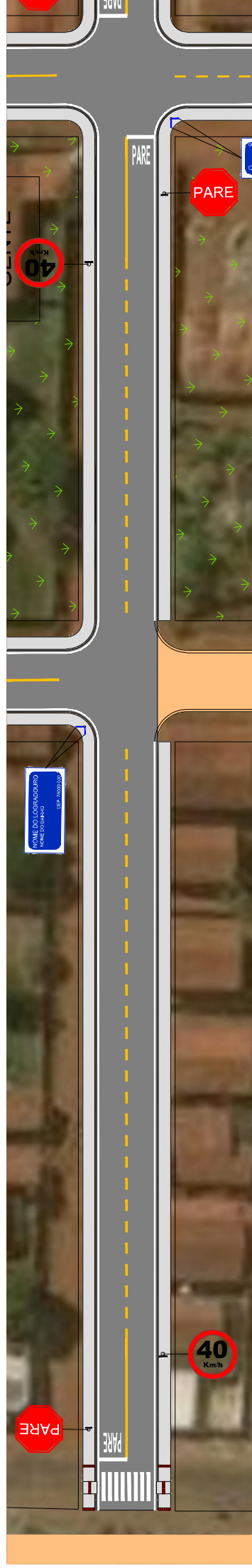


RUA O

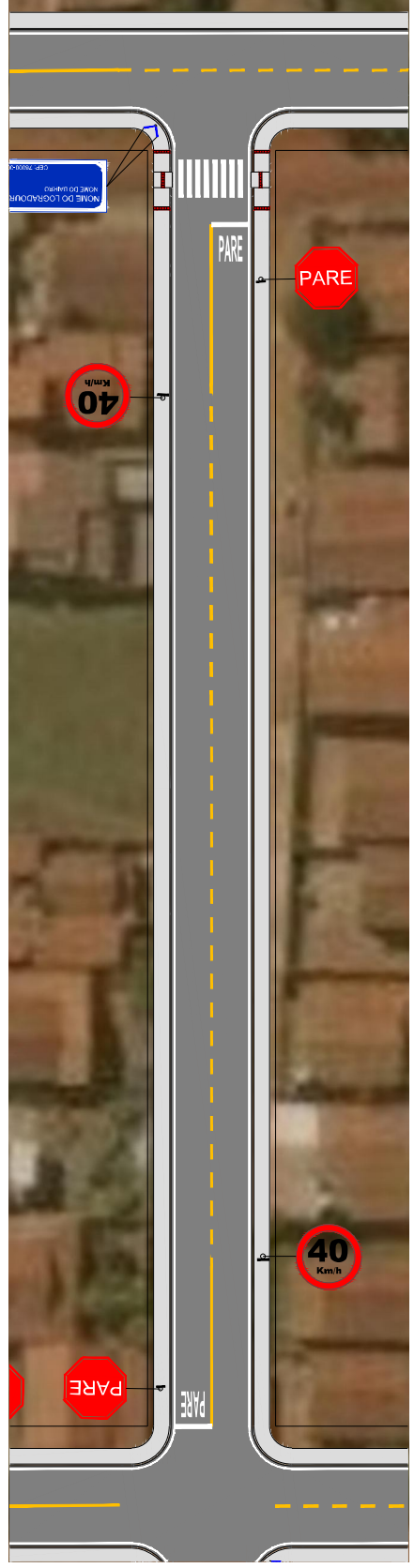


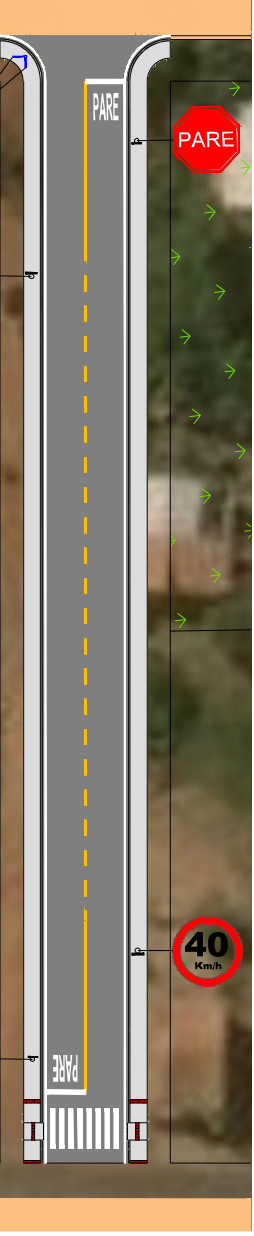


RUA R - TRECHO 1



RUA R - TRECHO 2

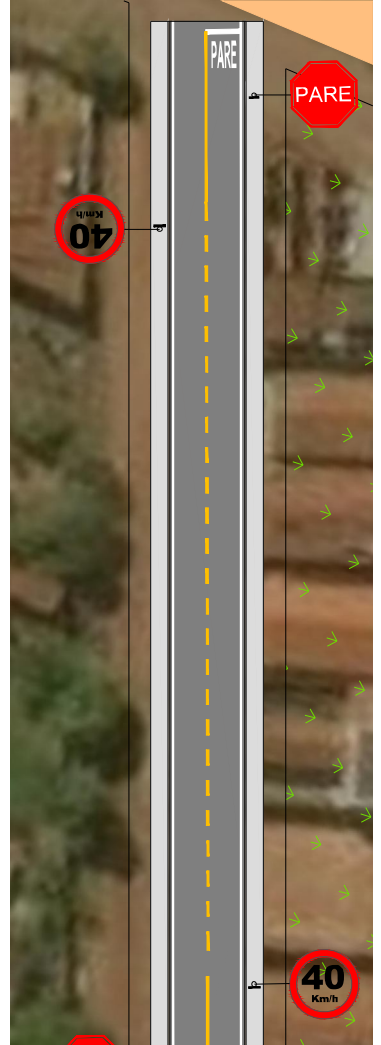




RUA MANOEL SOUZA

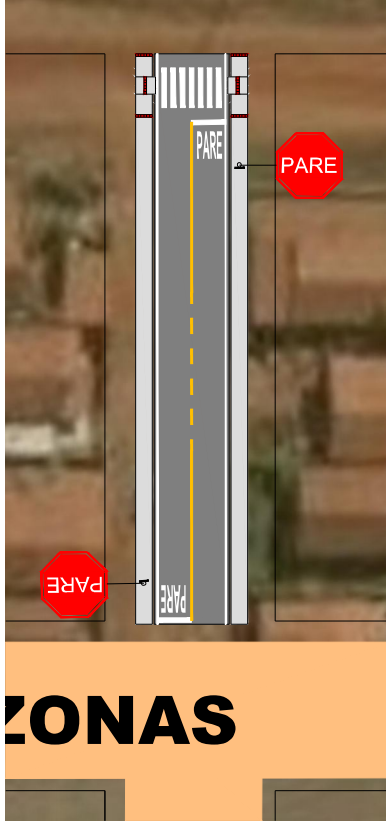
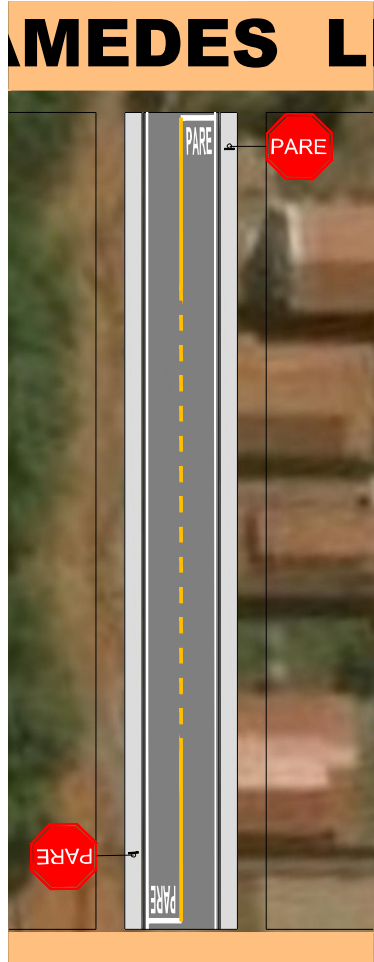


RUA 7



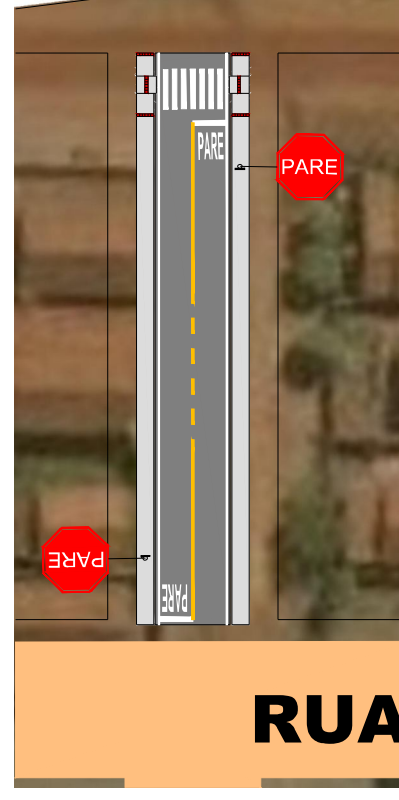
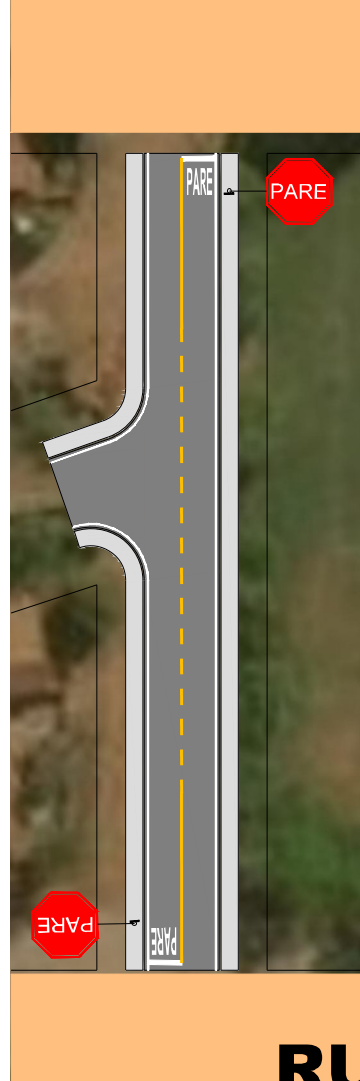
RUA 9

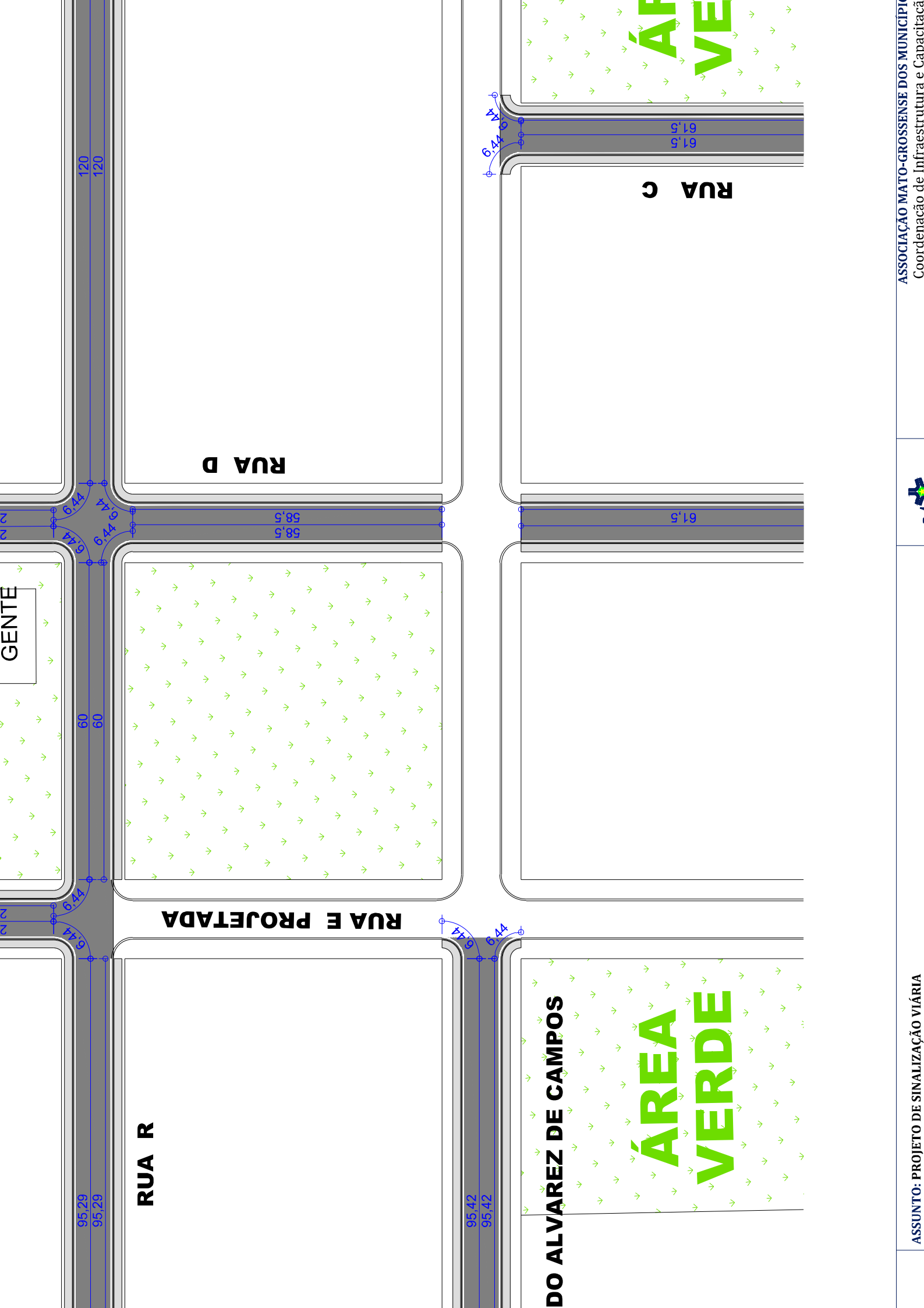




RUA CARLOS CHAGAS - TRECHO 1

RUA CARLOS CHAGAS - TRECHO 2





GENTE

RUA R

RUA E PROJETADA

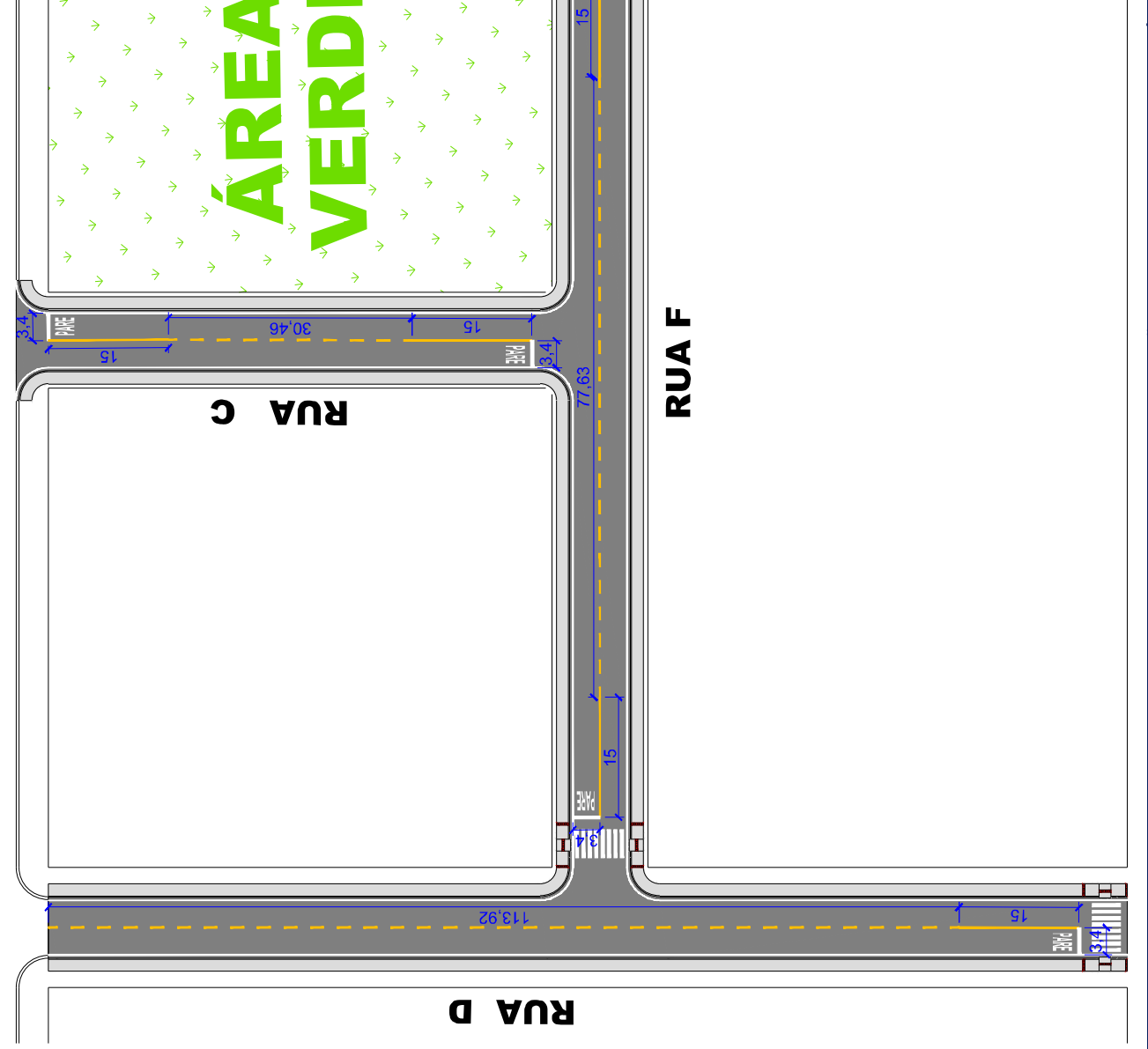
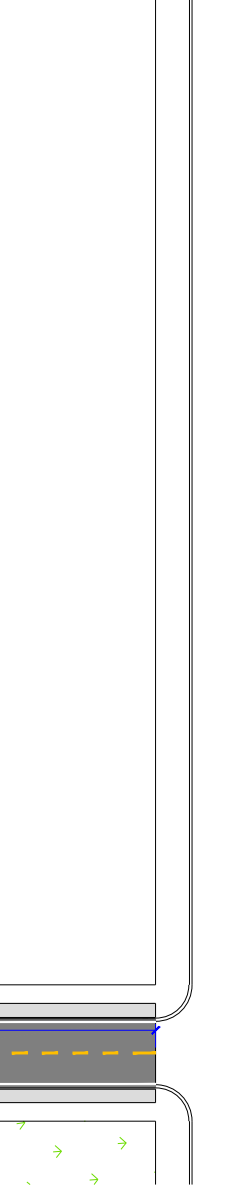
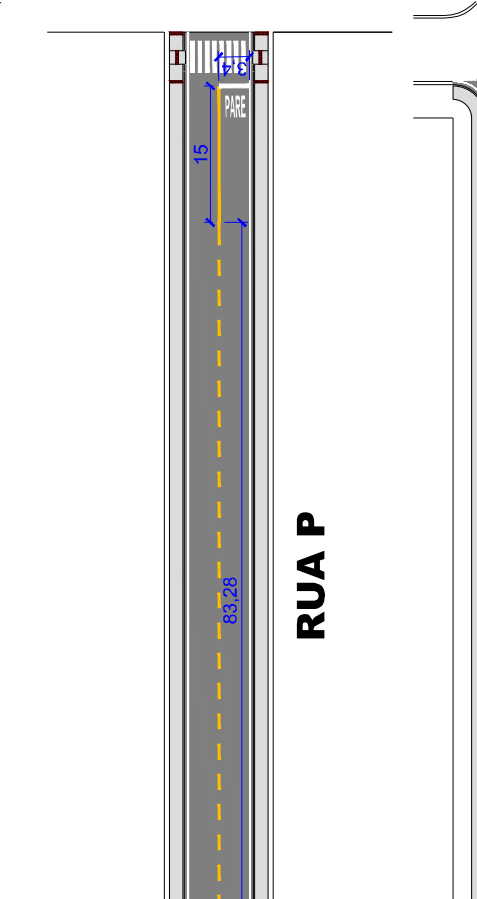
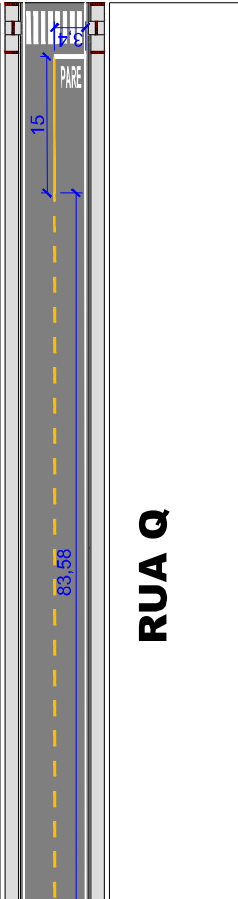
RUA D

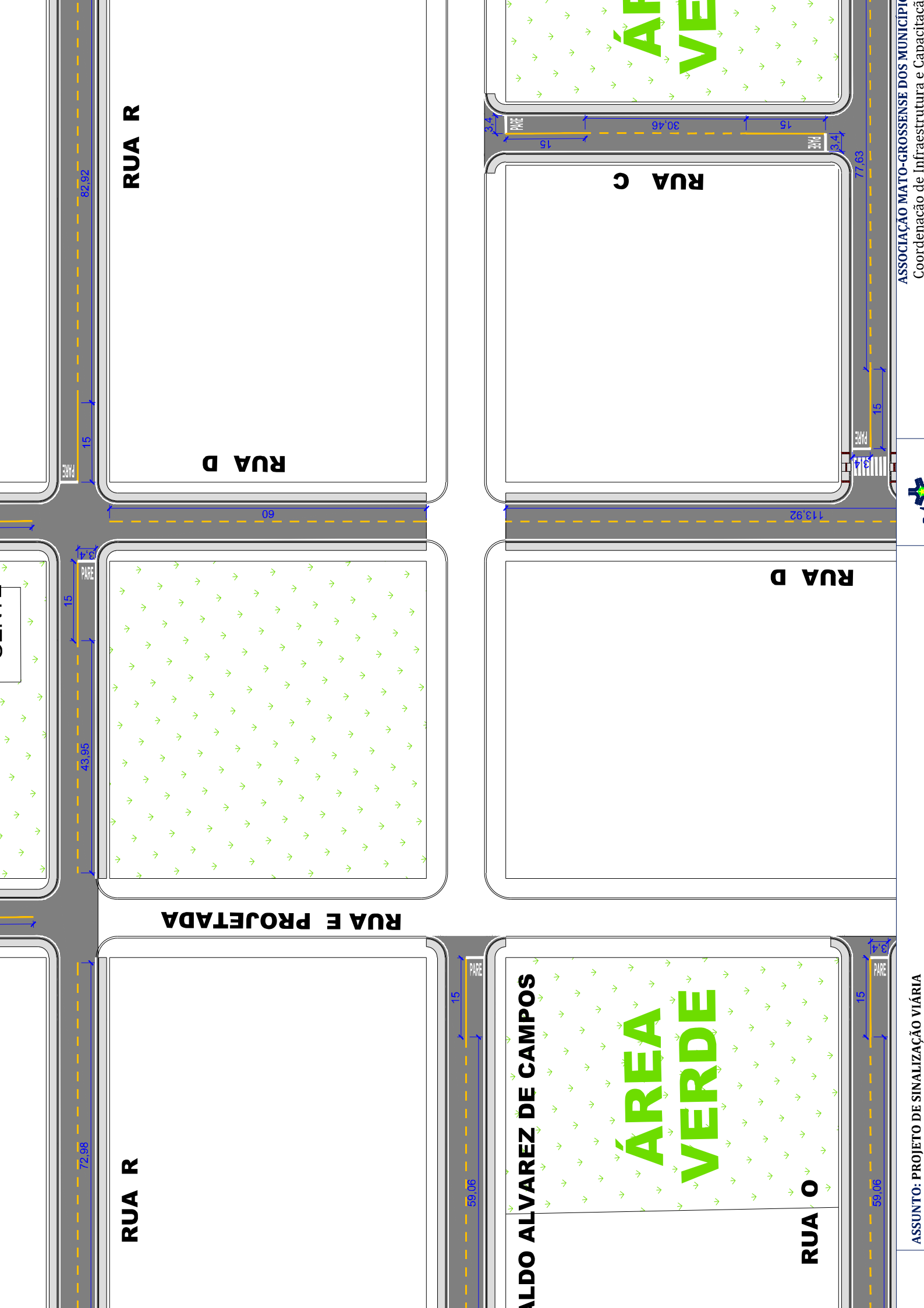
RUA C

DO ALVAREZ DE CAMPOS

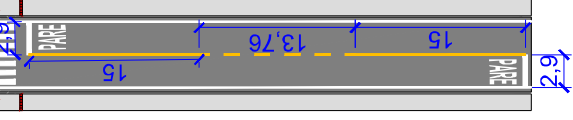
ÁREA VERDE



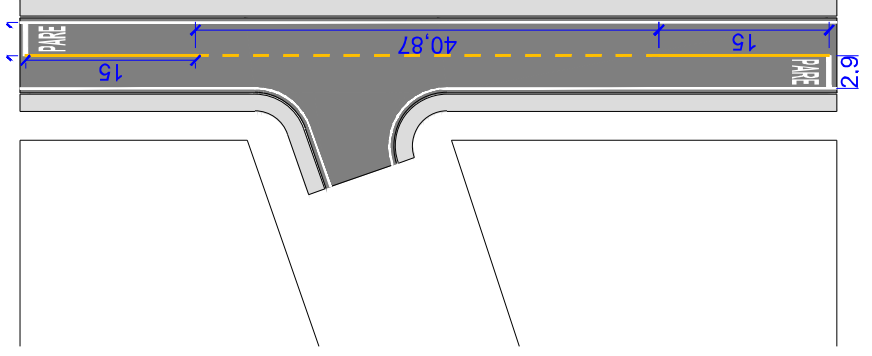




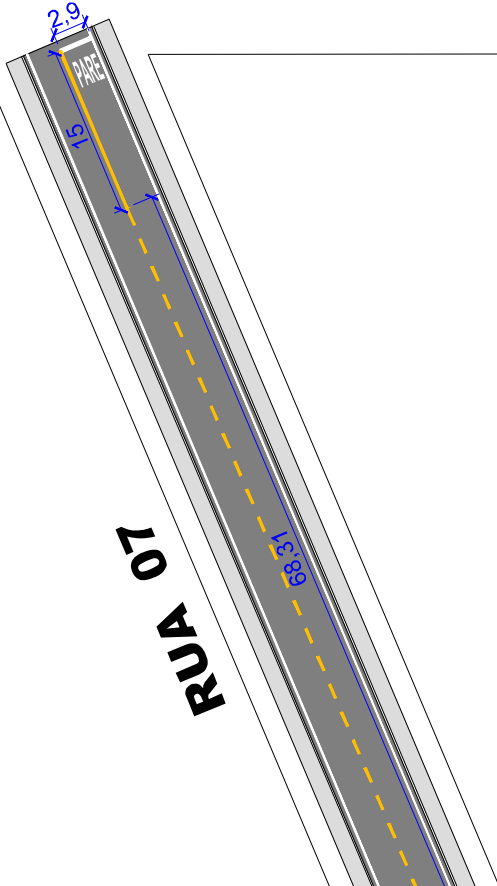
RUA CARLOS CHAGAS



RUA CARLOS CHAGAS

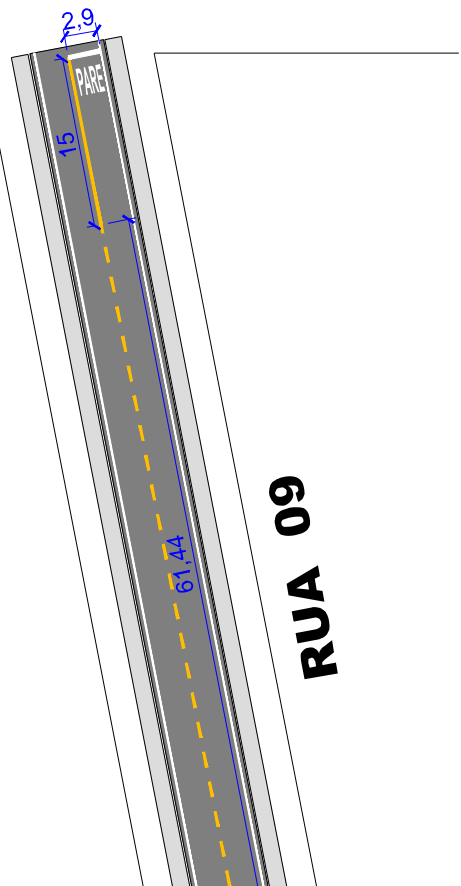


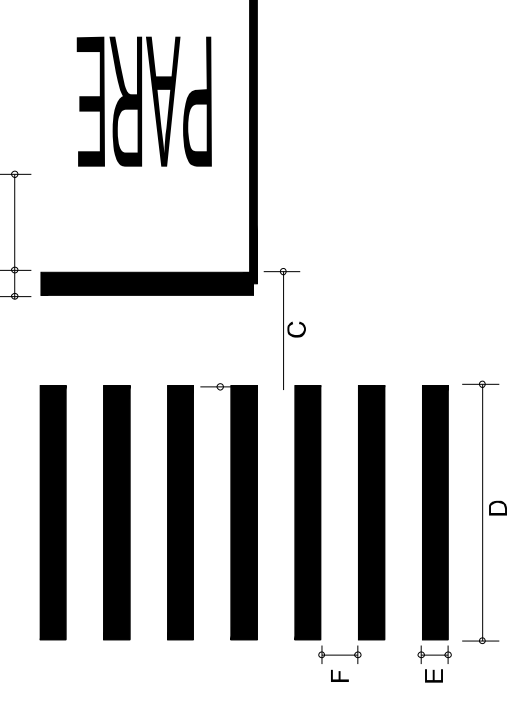
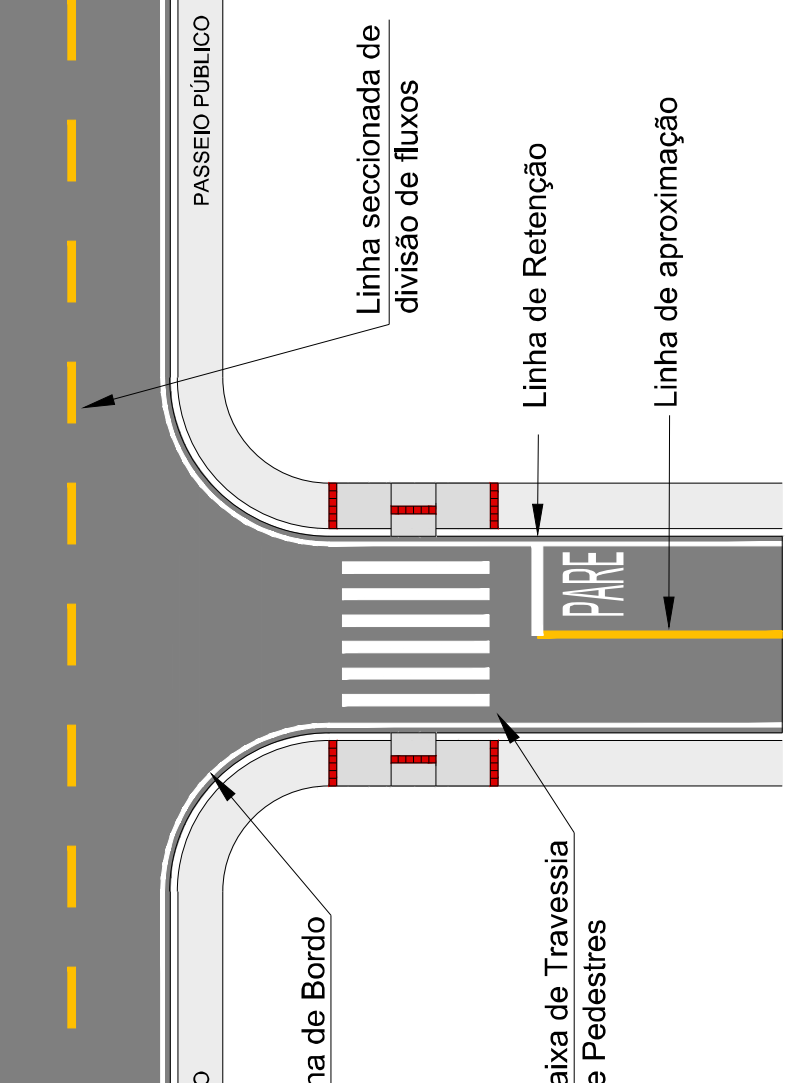
RUA 07



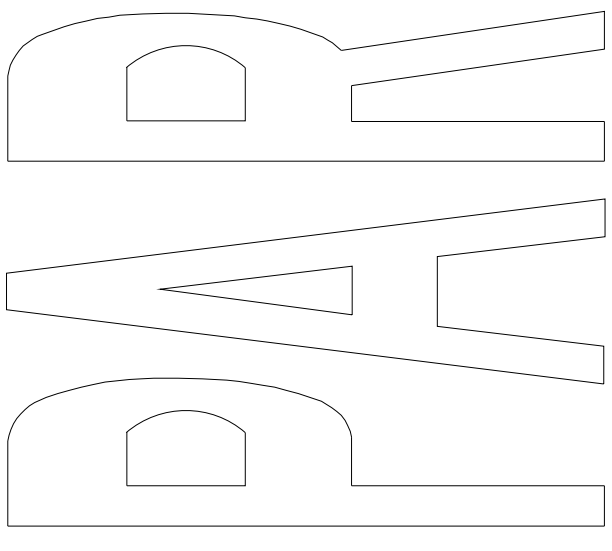
ÁREA VERDE

RUA 09



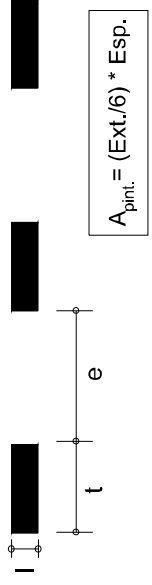
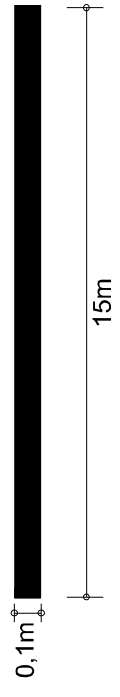


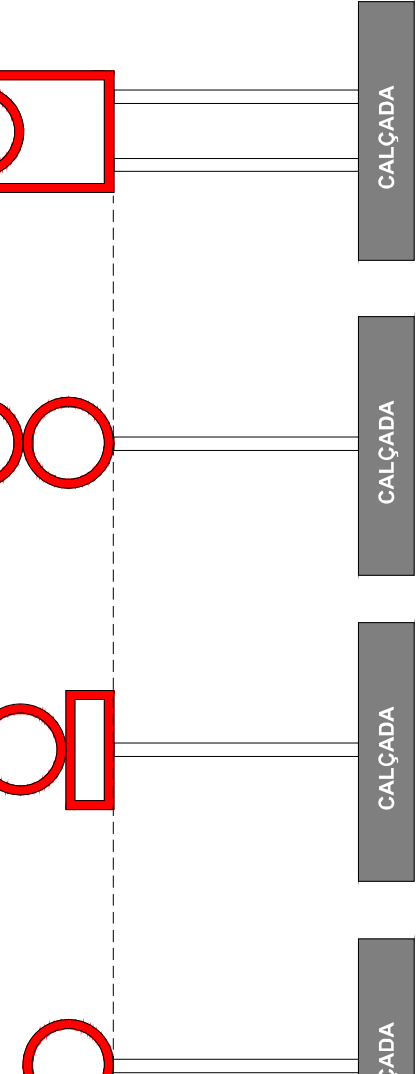
LEGENDA "PARE"



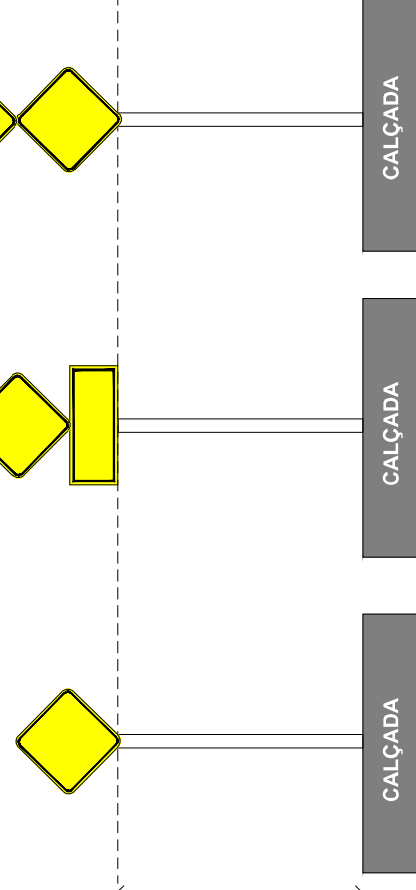
min. 1,90

to
m
a
nação:
m
m
m
a:
: 4,00 m
10 m



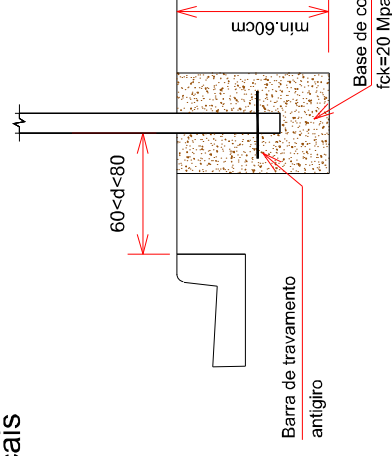
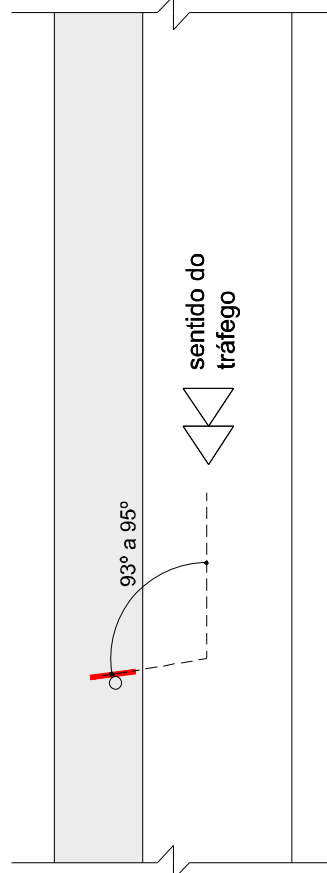


$2,00 \leq h \leq 2,50m$



na via

Fundação das Placas Verticais



PLACA INDICATIVA DE VELOCIDADE MÁXIMA PERMITIDA

R-19 Velocidade Máxima Permitida

CORES

Fundo: Vermelho Refletivo
 Orla Interna: Branco Refletivo
 Orla Externa: Vermelho Refletivo
 Letras: Branco Refletivo
 Verso: Preto Fosco

DIMENSÕES

Lado: 350 mm
 Orla Interna: 20 mm
 Orla Externa: 10 mm
 Altura da Letra: 101 mm



CORES

Fundo: Branco Refletivo
 Orla: Vermelho Refletivo
 Algarismo: Preto
 Legenda: Preta
 Verso: Preto Fosco

DIMENSÕES

Diâmetro: 400 mm
 Orla: 50 mm
 Algarismo (40): 200 mm
 Letra (Km/h): 44 mm

PLACA "PASSAGEM SINALIZADA DE PEDREIROS"

A-32b Passagem sinalizada de pedestres

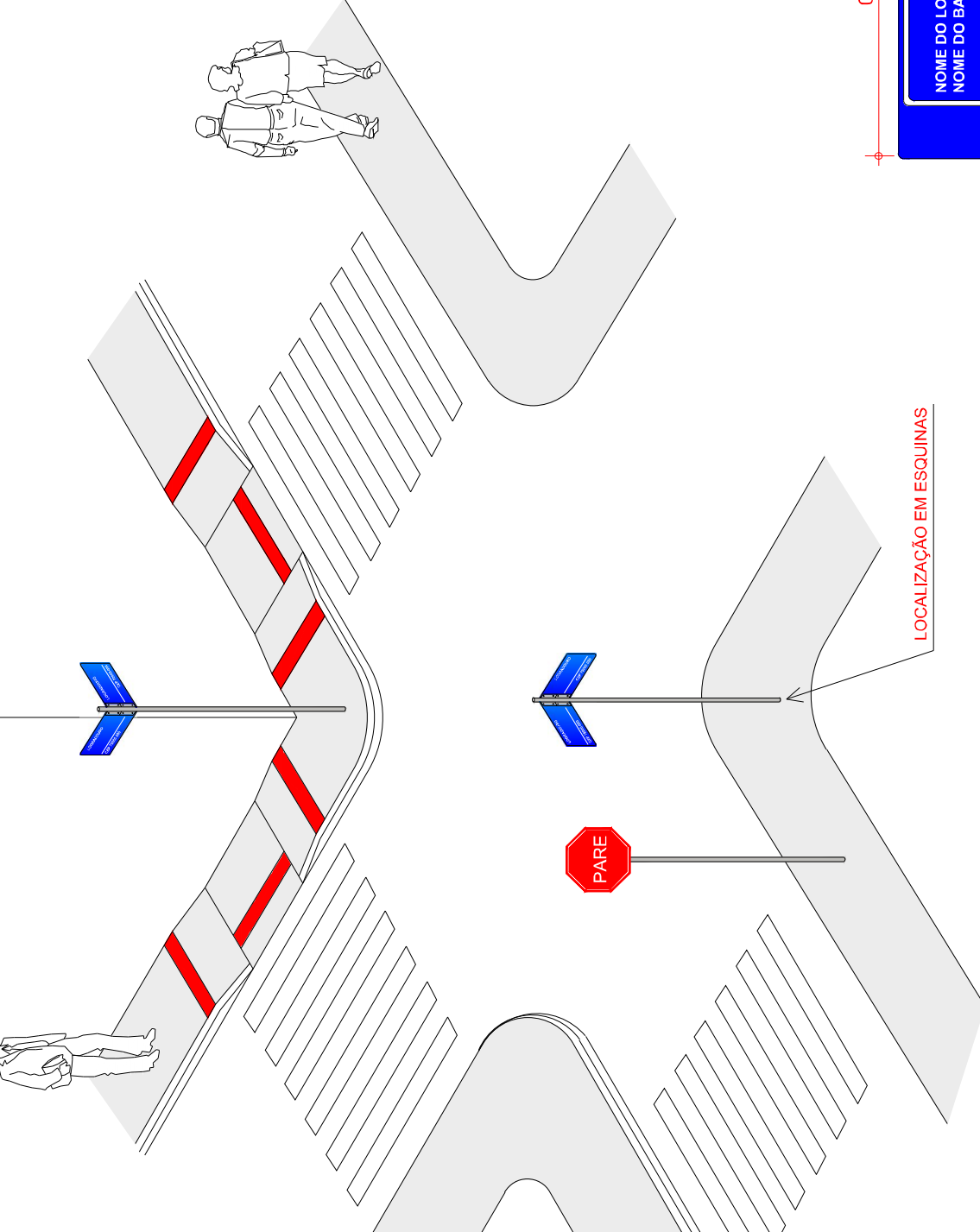
CORES

Fundo: Amarelo
 Orla Interna: Preta
 Orla Externa: Amarela
 Letras: Preto

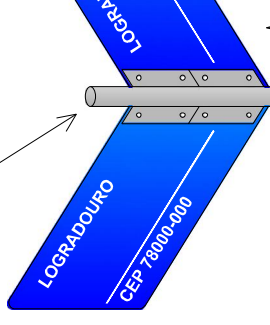
DIMENSÕES

Lado: 450 mm
 Orla Interna: 18 mm
 Orla Externa: 9 mm



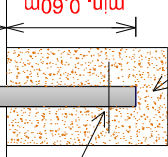


TUBO EM AÇO GALVANIZADO

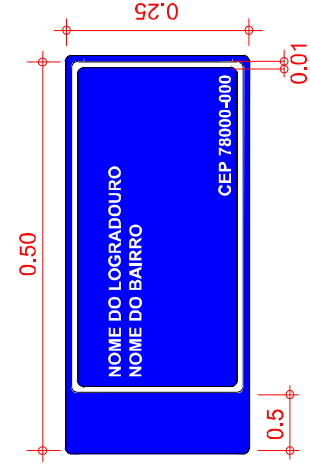


min. 2,50m

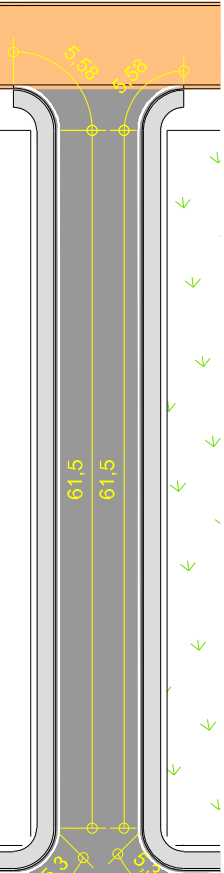
BARRA PARA TRAVAMENTO



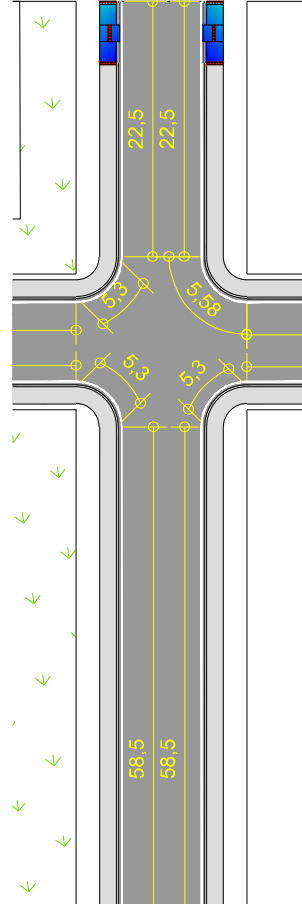
min. 0,60m



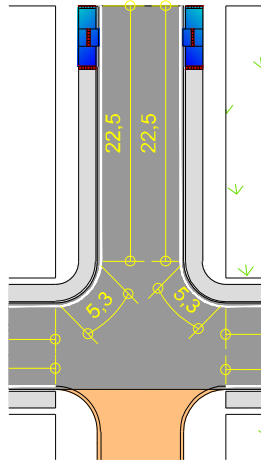
*CEP a ser fornecido pela Prefeitura municipal



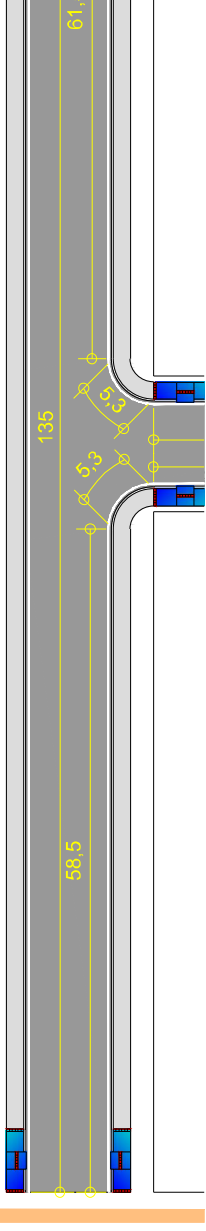
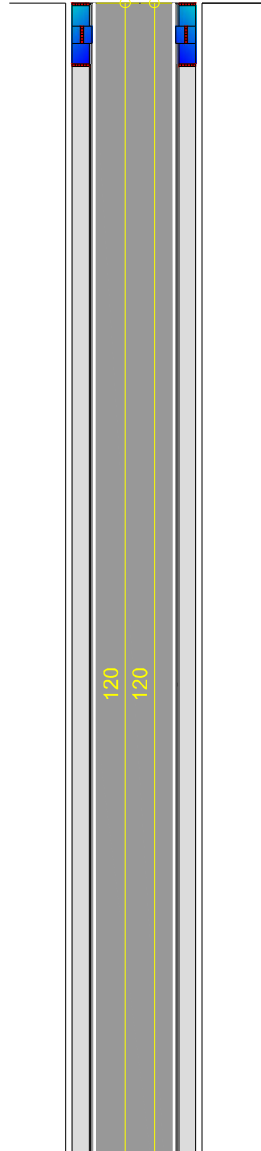
RUA D - TRECHO 2



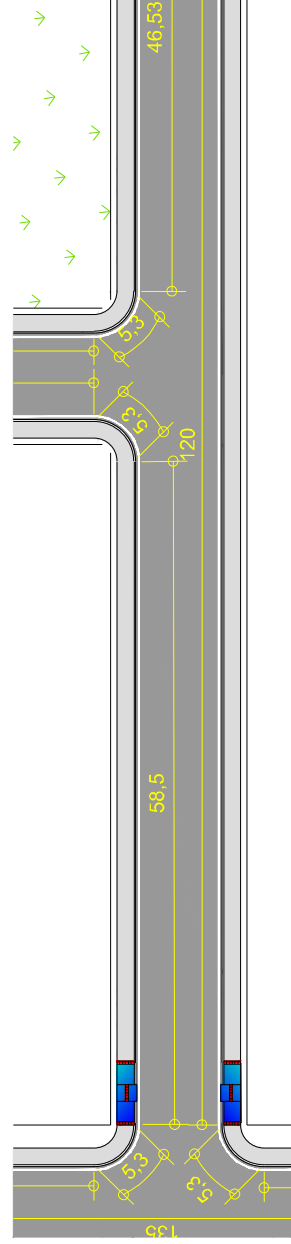
RUA E



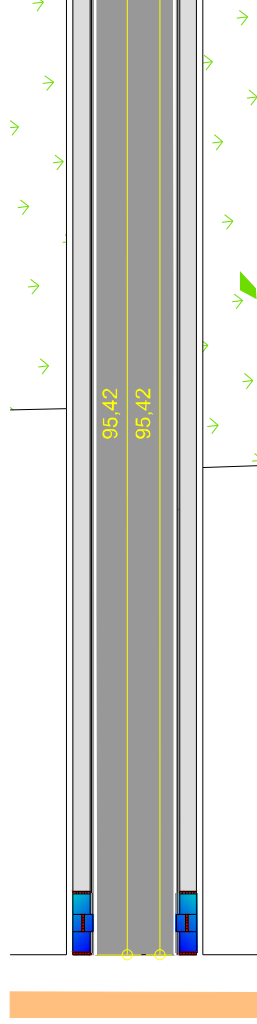
RUA P



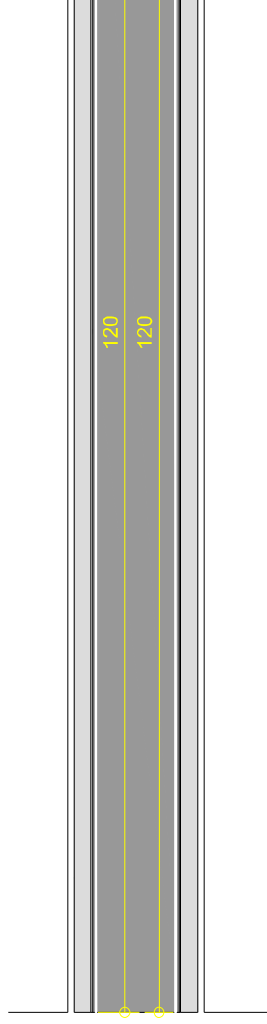
RUA F

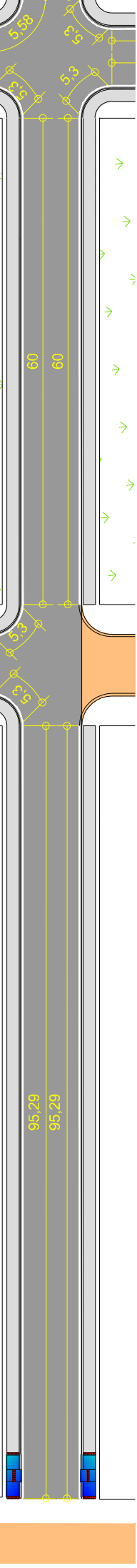


RUA O

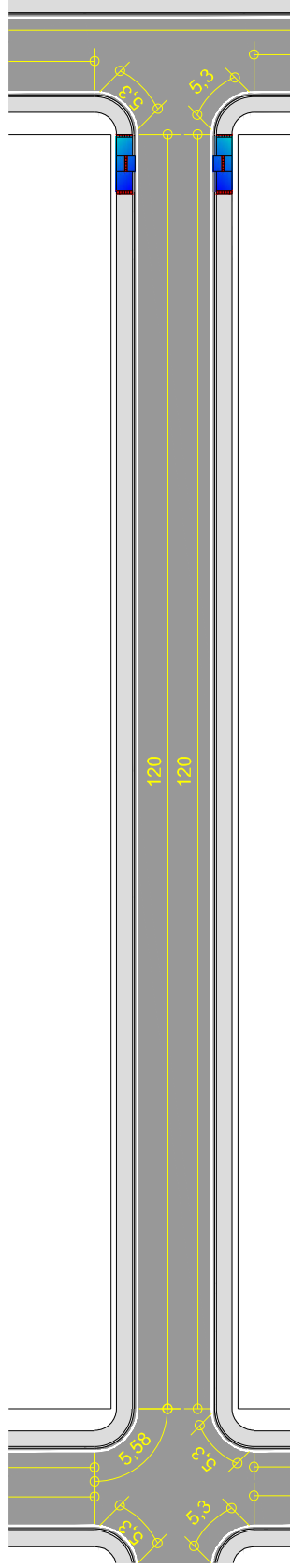


RUA Q

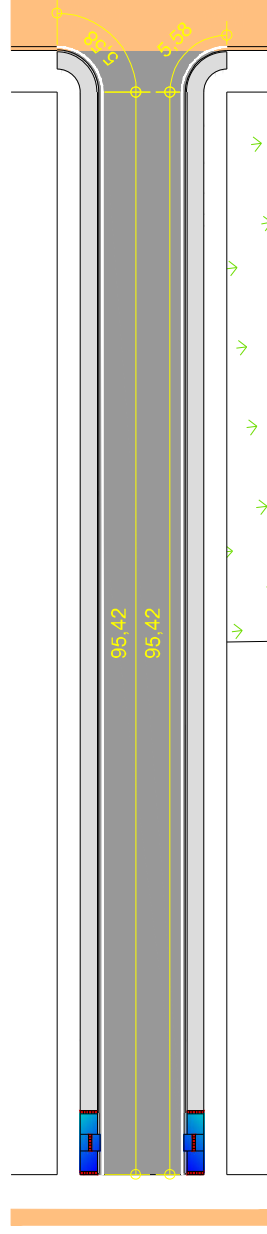




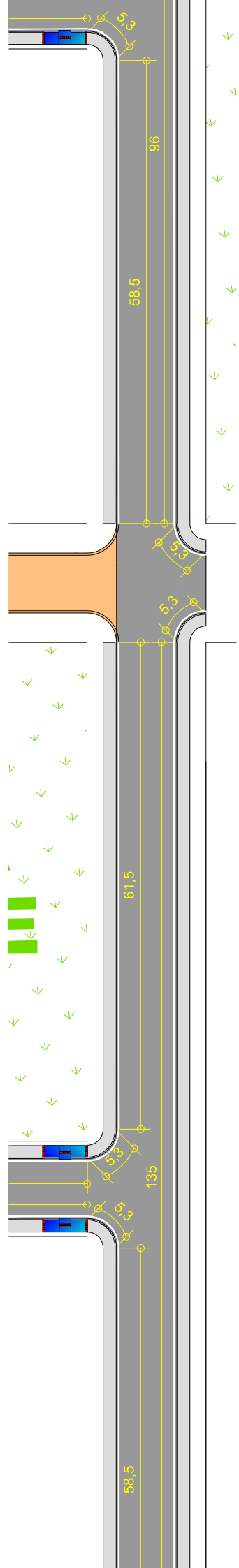
RUA R - TRECHO 2

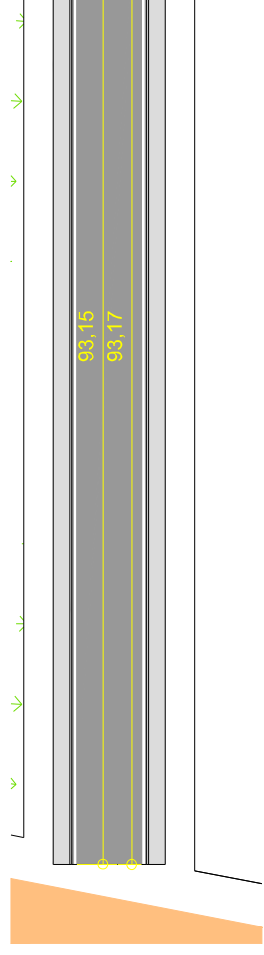


RUA OSVALDO ALAVAREZ

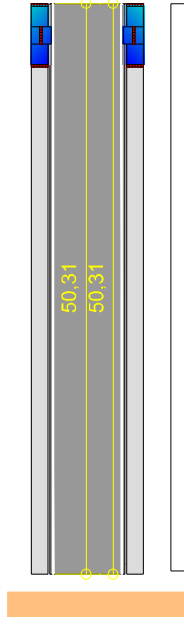


RUA MANOEL SOUZA

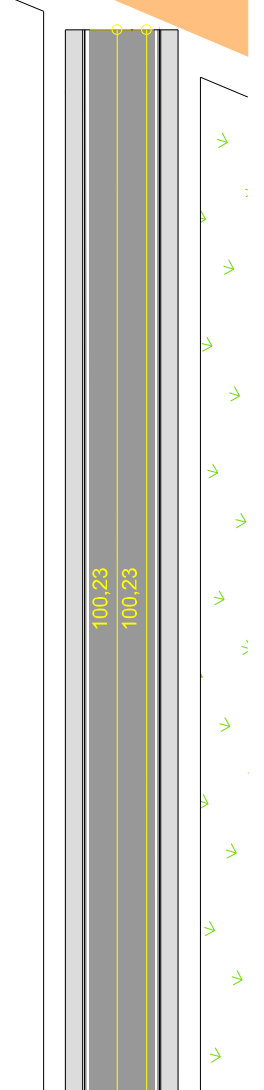
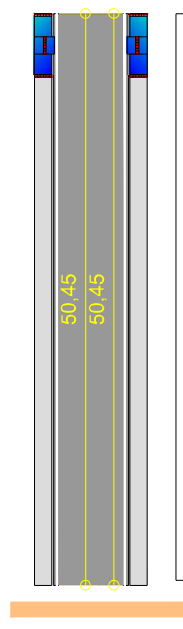




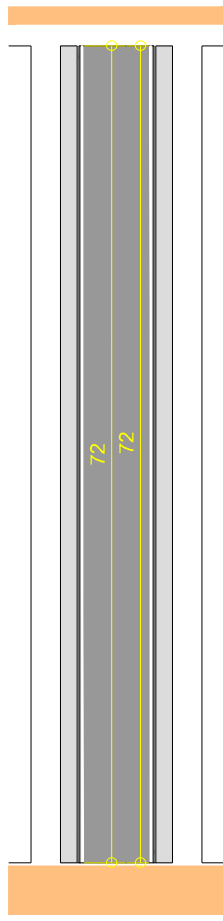
RUA PRINCESA ISABEL - TRECHO 2



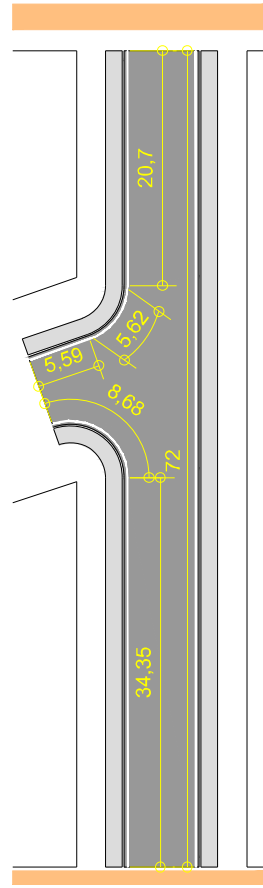
RUA CARLOS CHAGAS - TRECHO 2

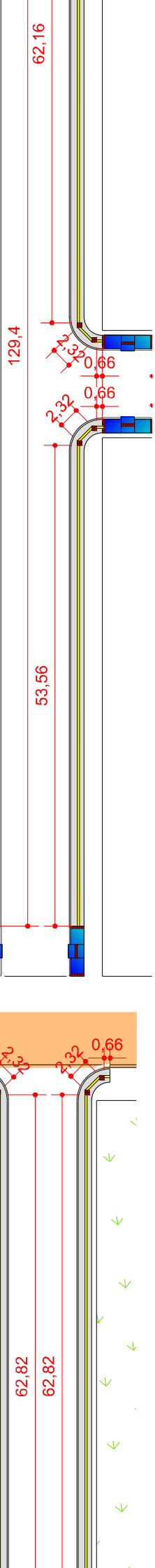


RUA PRINCESA ISABEL - TRECHO 1



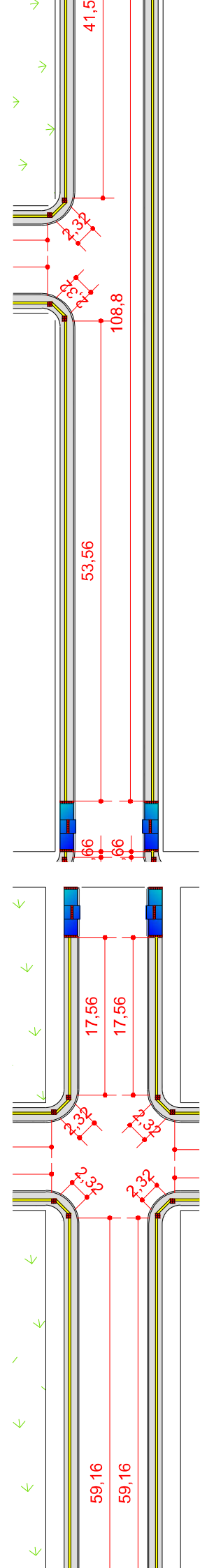
RUA CARLOS CHAGAS - TRECHO 1





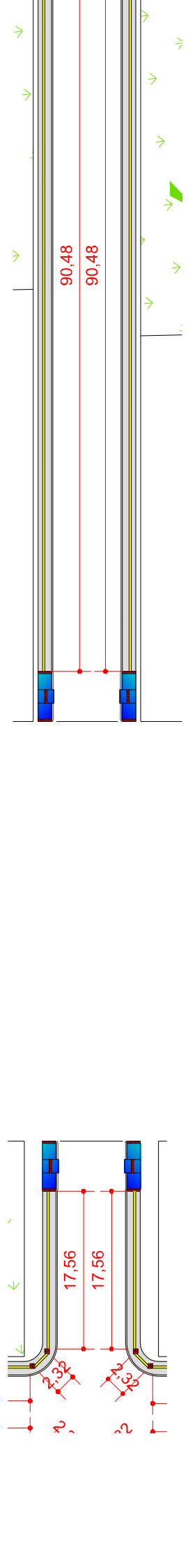
RUA F

RUA D - TRECHO 2



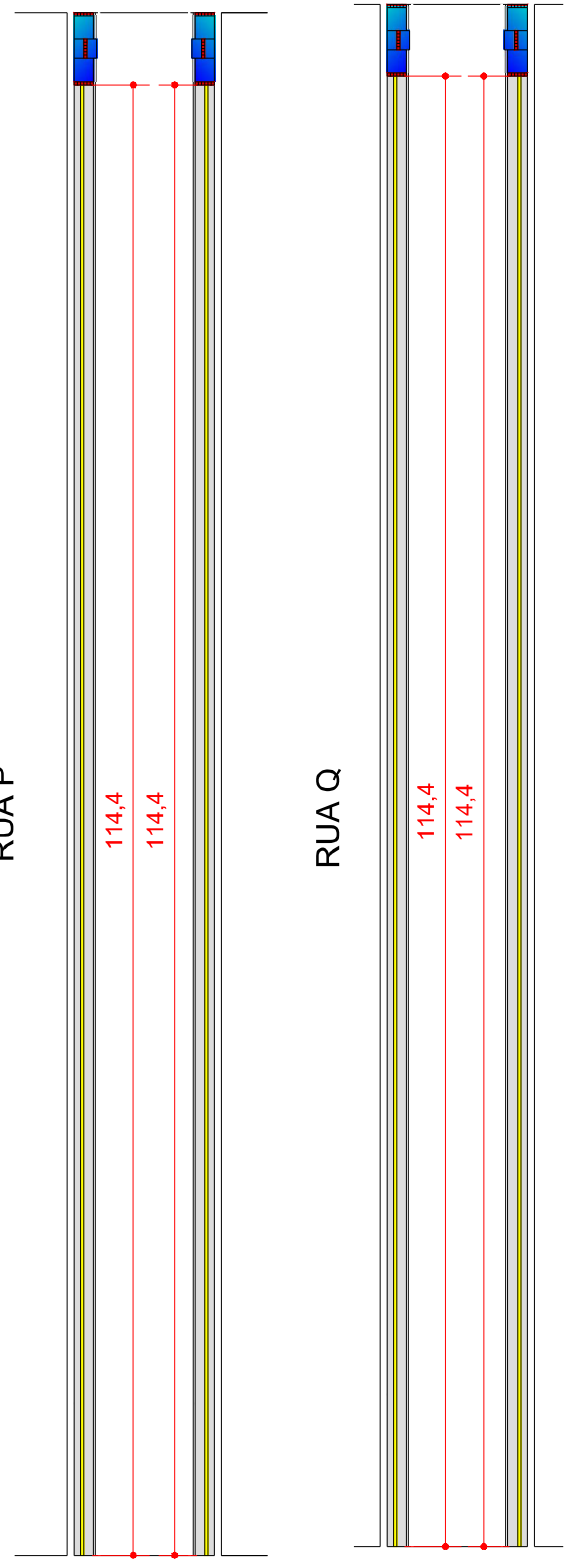
RUA O

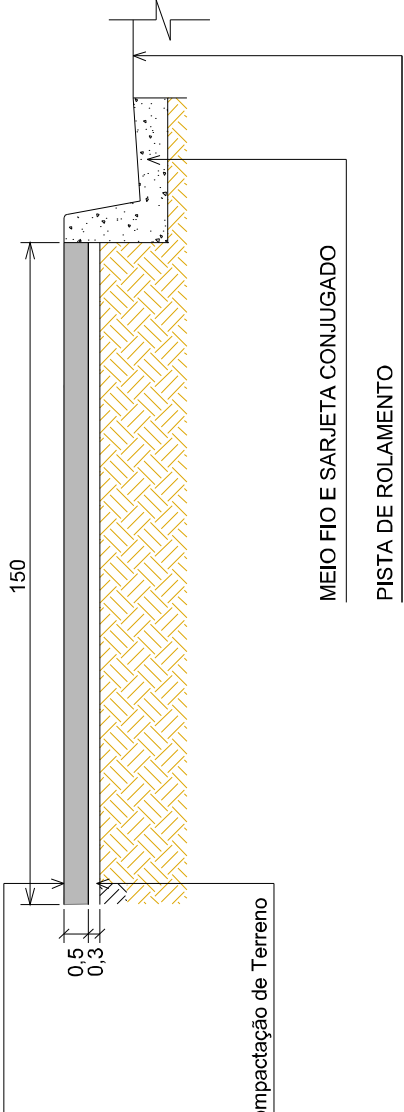
RUA E



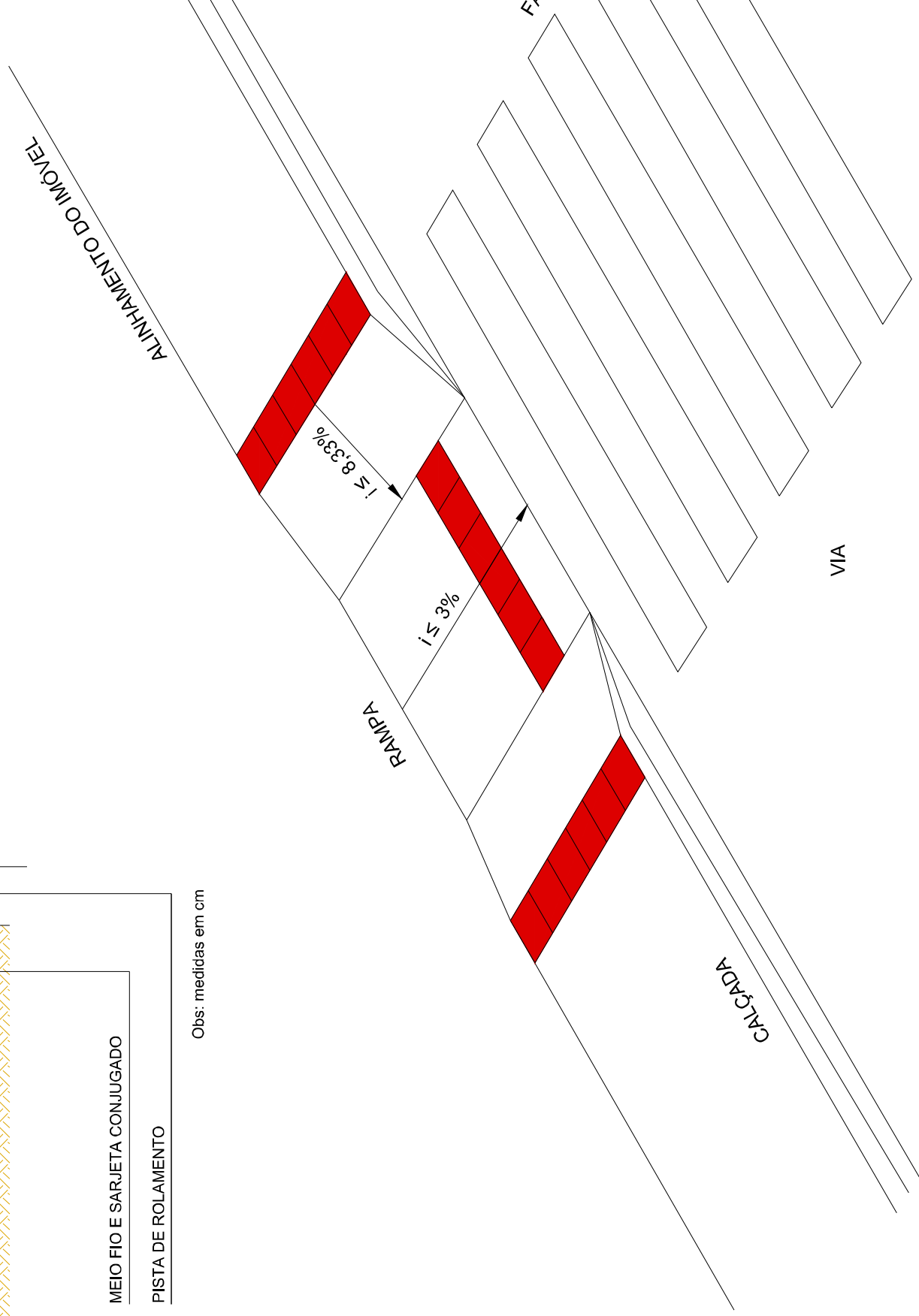
RUA P

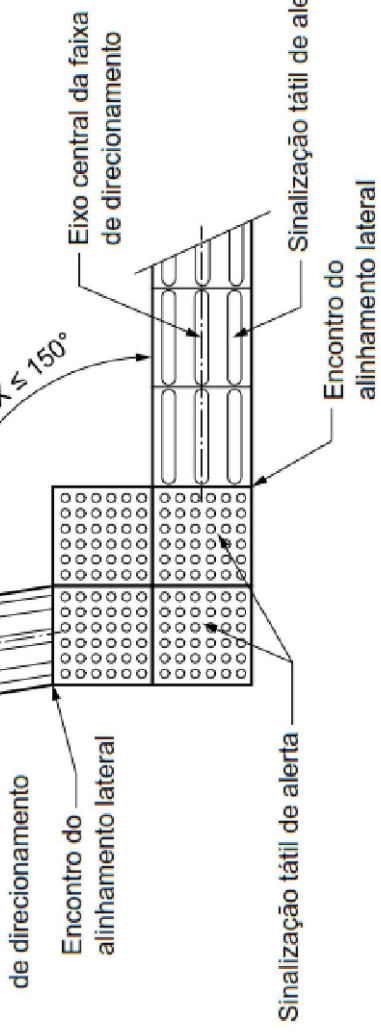
RUA Q



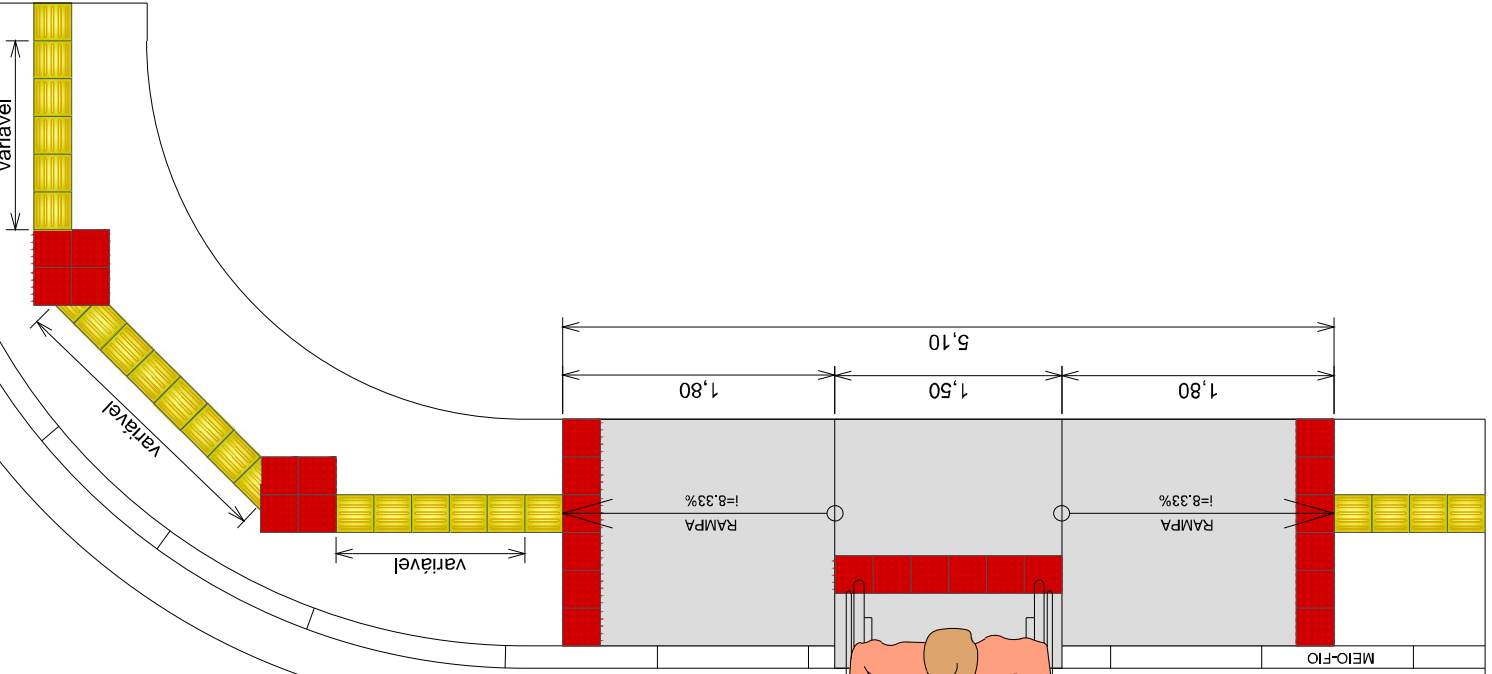


Obs: medidas em cm

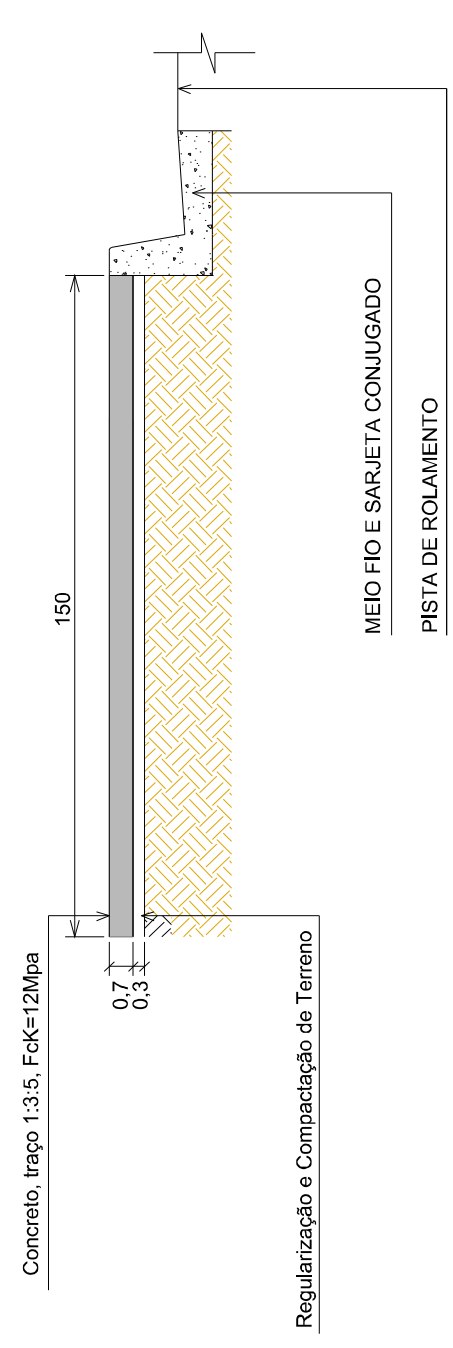




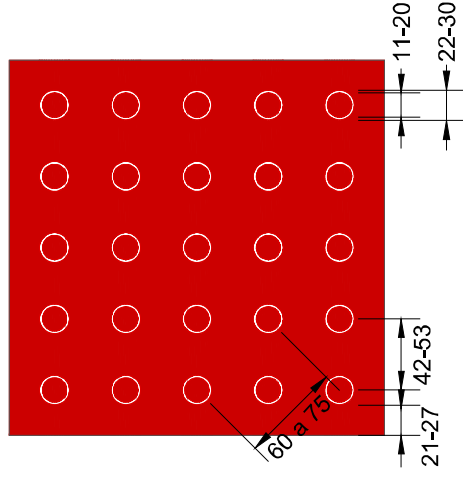
Conforme NBR11



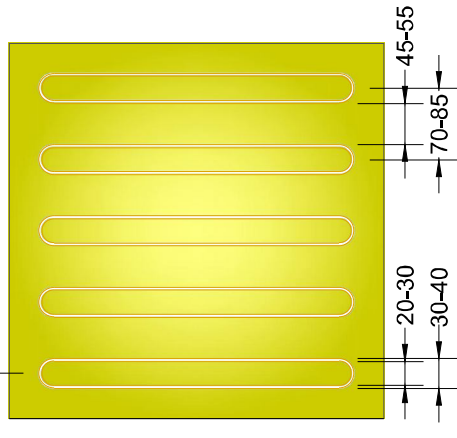
SEÇÃO TRANSVERSAL DA CALÇADA



Obs: medidas em cm



OBS: MEDIDAS EM CM



OBS: MEDIDAS EM CM

a sinalização tátil de alerta:

	Mínimo mm	Máximo mm
Diâmetro de base do relevo	22	30
Distância horizontal entre os centros de relevo	42	53
Distância diagonal entre os centros de relevo	60	75
Distância horizontal entre bases de relevo	Entre 3 e 5	

Nota: Distância do eixo da primeira linha de relevo até a borda do piso = 1/2 distância horizontal entre os centros. Distância do eixo da primeira linha de relevo a borda do piso = 1/2 a 2/3 do diâmetro da base.

Dimensões da sinalização tátil direcional:

	Mínimo mm
Diâmetro de base do relevo	30
Largura do topo	20
Altura do relevo	Entre 3 e 5 (quando a altura do relevo for igual ou superior a 30 mm)
Distância horizontal entre centros de relevo	70
Distância horizontal entre bases de relevo	45

Nota: Distância do eixo da primeira linha de relevo a borda do piso = 1/2 distância horizontal entre centros de relevo.